

14SFHK-(S)10 SERIES 1" SPIN-OUT FILTER / SEPARATOR HOUSINGS & KITS

APPLICATION:

- Agriculture
- Industrial / Commercial
- Pre-treatment
- Whole House Residential
- Irrigation

FEATURES:

- Compatible with Schedule 40 & 80 PVC Pipe
- Gripper Ribs on Filter Bowl
 - No tools Required to install / remove filter bowl
- Flush System - 1/2" MPT Connection for Purge Valve
- Suitable for Installation on either the Suction or Pressure Side of Pump
- Elements marked with mesh rating and replacement O-Ring for easy identification

SPECIFICATION:

- Inlet/Outlet Connection 1" Slip or 1-1/4" Spigot: ASTM D2466
- Threaded Connections: ASME/ANSI B1.20.1
- Filter Head Materials: ASTM D1784 - Grade 1 PVC
- Maximum Pressure Rating: 150 PSI @ 73°F (23°C)
- Maximum Temperature Rating: 100°F (38°C) @ 40 PSI
- Flow Rate: 1-25 GPM

CERTIFICATION:

- NSF/ANSI 372

KIT INCLUDES:

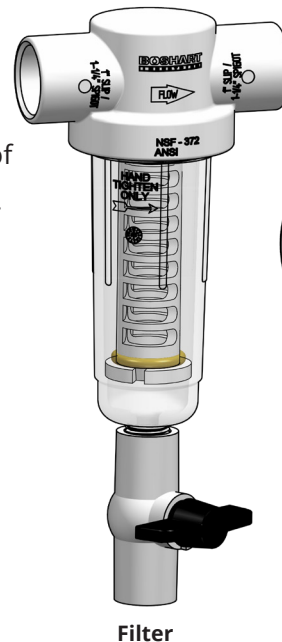
- Housing
- Purge Valve
- Filter or Separator Element
 - (not included in basic unit 14SFHK-10 or 14SFHK-S10)
- Mounting Clamps and hardware

MATERIAL LIST	
Part Name	Material
Head	HR-5009 RIGID PVC (White)
Bowl	Polycarbonate Lexan 124R
Bowl O-Ring	Buna-N (Size AS568-226)
Element Core	HR-5009 RIGID PVC (White)
Element O-Ring	Buna-N (Size AS568-120)
Screen	316 Stainless Steel
Purge Valve	Body:PVC, Handle:ABS, Seat:TPE
Mounting Clamp	PVC

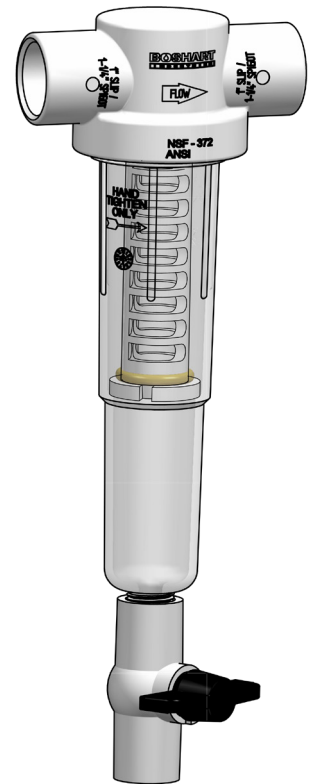
LEAD FREE



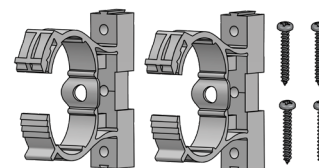
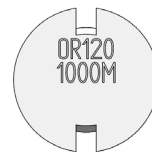
Certified by IAPMO R&T Against NSF/ANSI Standard 372 For Lead Free Compliance.



Filter



Separator



BOSHART
INDUSTRIES

25 Whaley Avenue, PO Box 310, Milverton, ON CANADA N0K 1M0
Tel: 800-561-3164

boshart.com ♦ blog.boshart.com

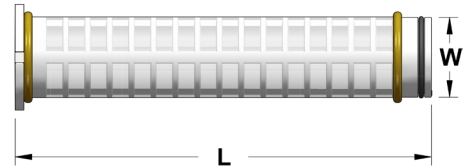
14SFHK-(S)10 SERIES 1" SPIN-OUT FILTER / SEPARATOR HOUSINGS & KITS



Filter Housing



Separator Housing



DIMENSIONS													
Part No.	Filter Element			Complete Unit with Valve				Filter Element Only				Weight	
	Mesh Size	Micron	Opening	W		L		W		L		lb	gram
				inch	mm	inch	mm	inch	mm	inch	mm		
SEDIMENT FILTER KIT													
14SFHK-10	Basic Unit			4.97	126.2	11.21	248.7	—	—	—	—	0.98	446
14SFHK-10SM024	24	711	0.0280	4.97	126.2	11.21	248.7	1.18	30.0	5.16	131.1	1.15	520
14SFHK-10SM030	30	533	0.0232	4.97	126.2	11.21	248.7	1.18	30.0	5.16	131.1	1.15	520
14SFHK-10SM040	40	381	0.0165	4.97	126.2	11.21	248.7	1.18	30.0	5.16	131.1	1.15	520
14SFHK-10SM060	60	254	0.0100	4.97	126.2	11.21	248.7	1.18	30.0	5.16	131.1	1.15	520
14SFHK-10SM100	100	152	0.0060	4.97	126.2	11.21	248.7	1.18	30.0	5.16	131.1	1.15	520
14SFHK-10SM140	140	104	0.0040	4.97	126.2	11.21	248.7	1.18	30.0	5.16	131.1	1.15	520
14SFHK-10SM200	200	74	0.0029	4.97	126.2	11.21	248.7	1.18	30.0	5.16	131.1	1.15	520
14SFHK-10SM250	250	61	0.0024	4.97	126.2	11.21	248.7	1.18	30.0	5.16	131.1	1.15	520
14SFHK-10SM500	500	30	0.0012	4.97	126.2	11.21	248.7	1.18	30.0	5.16	131.1	1.15	520
14SFHK-10SM1000	1000	15	0.0006	4.97	126.2	11.21	248.7	1.18	30.0	5.16	131.1	1.15	520
SEDIMENT SEPARATOR KIT													
14SFHK-S10	Basic Unit			4.97	126.2	13.83	351.3	—	—	—	—	1.02	464
14SFHK-S10SM024	24	711	0.0280	4.97	126.2	13.83	351.3	1.18	30.0	5.16	131.1	1.19	538
14SFHK-S10SM030	30	533	0.0232	4.97	126.2	13.83	351.3	1.18	30.0	5.16	131.1	1.19	538
14SFHK-S10SM040	40	381	0.0165	4.97	126.2	13.83	351.3	1.18	30.0	5.16	131.1	1.19	538
14SFHK-S10SM060	60	254	0.0100	4.97	126.2	13.83	351.3	1.18	30.0	5.16	131.1	1.19	538
14SFHK-S10SM100	100	152	0.0060	4.97	126.2	13.83	351.3	1.18	30.0	5.16	131.1	1.19	538
14SFHK-S10SM140	140	104	0.0040	4.97	126.2	13.83	351.3	1.18	30.0	5.16	131.1	1.19	538
14SFHK-S10SM200	200	74	0.0029	4.97	126.2	13.83	351.3	1.18	30.0	5.16	131.1	1.19	538
14SFHK-S10SM250	250	61	0.0024	4.97	126.2	13.83	351.3	1.18	30.0	5.16	131.1	1.19	538
14SFHK-S10SM500	500	30	0.0012	4.97	126.2	13.83	351.3	1.18	30.0	5.16	131.1	1.19	538
14SFHK-S10SM1000	1000	15	0.0006	4.97	126.2	13.83	351.3	1.18	30.0	5.16	131.1	1.19	538

BOSHART
INDUSTRIES

25 Whaley Avenue, PO Box 310, Milverton, ON CANADA N0K 1M0
Tel: 800-561-3164

boshart.com ♦ blog.boshart.com