

PITLESS ADAPTERS, WELL CAPS & WELL SEALS

Major components for industrial and residential well assembly
in a range of sizes and materials



INDEX

| Product Line | Page |
|---|-------------|
| Standard Pitless Adapters | 1 |
| Pressurized Pitless Adapters | 1 |
| Tapped Pitless Adapters | 2 |
| Clamp On Pitless Adapters | 2 |
| Weld On Pitless Adapters | 3 |
| Wrap Around Pitless Adapters - PVC Casing | 3 |
| Clear Way Pitless Adapters - Steel Casing | 3 |
| Concrete Tile Pitless Adapters | 3 |
| Double Drop Pipe Pitless Adapters | 4 |
| Bronze Wire Spud | 4 |
| Pitless Adapter Accessories | 4 |
| Industrial Pitless Units | 4 |
| Plain Well Caps | 6 |
| Conduit Well Caps | 6 |
| WTC Series Watertight Well Caps | 7 |
| WTMLC Series Watertight Well Caps | 8 |
| WTCC Series Watertight Well Caps | 9 |
| WTCL Series Watertight Well Caps | 9 |
| WTCL Series Premium Watertight Well Cap | 9 |
| Premium Watertight Well Cap Accessories | 10 |
| Plastic Well Seals | 11 |
| Cast Iron Well Seals | 12 |
| Steel Well Seals | 13 |
| Well Seal Accessories | 14 |

STANDARD PITLESS ADAPTERS

Boshart's standard pitless adapters are designed to make raising a submersible pump for service or replacement easier. They feature gaskets for sealing on the casing.



| Part No. | Size | Well Casing Size | Drop Pipe Size | Hole Saw Size | Maximum Load - Lbs | Quantity | |
|----------|------|------------------|----------------|---------------|--------------------|----------|----|
| | | | | | | L1 | L2 |



Bronze, Boshart

- NSF/ANSI 372 Certified
- Large gasket for more efficient sealing on casing

| | | | | | | | |
|----------|----|-----------|----|--------|-----|----|--|
| PA-800NL | 1" | 5" to 12" | 1" | 1-3/4" | 900 | 16 | |
|----------|----|-----------|----|--------|-----|----|--|



Bronze, Boshart

- NSF/ANSI 372 Certified
- Water Systems Council Listed PAS-97
- Large gasket for more efficient sealing on casing



| | | | | | | | |
|----------|--------|---------------|--------|--------|------|----|--|
| PA-100NL | 1" | 5" to 12" | 1" | 1-3/4" | 2000 | 16 | |
| PA-125NL | 1-1/4" | 5" to 12" | 1-1/4" | 2-1/8" | 2000 | 10 | |
| PA-200NL | 2" | 5-5/8" to 12" | 2" | 3-1/8" | 5000 | 4 | |



Bronze, Sealwell

- NSF/ANSI 372 Certified
- Large gasket for more efficient sealing on casing

| | | | | | | | |
|---------|----|-----------|----|--------|------|----|--|
| P-100NL | 1" | 5" to 12" | 1" | 1-3/4" | 2000 | 16 | |
|---------|----|-----------|----|--------|------|----|--|



Bronze, Dicken

- NSF/ANSI 372 Certified

| | | | | | | | |
|-----------|--------|---------------|--------|--------|------|----|--|
| JR-S-10NL | 1" | 4-1/2" to 12" | 1" | 1-3/4" | 1500 | 12 | |
| LD-S-10NL | 1" | 5" to 12" | 1" | 1-3/4" | 2000 | 12 | |
| LD-S-12NL | 1-1/4" | 5" to 12" | 1-1/4" | 2-1/8" | 2000 | 8 | |
| S-20NL | 2" | 5-5/8" to 12" | 2" | 3-1/8" | 5000 | 4 | |



304 Stainless Steel, Boshart

- NSF/ANSI 372 Certified
- Large gasket for more efficient sealing on casing

| | | | | | | | |
|----------|----|-----------|----|--------|------|---|----|
| P-800-SS | 1" | 5" to 12" | 1" | 1-3/4" | 6000 | 1 | 10 |
|----------|----|-----------|----|--------|------|---|----|



304 Stainless Steel, Boshart

- NSF/ANSI 372 Certified
- Water Systems Council Listed PAS-97
- Large gasket for more efficient sealing on casing



| | | | | | | | |
|----------|--------|-----------|--------|--------|------|---|----|
| P-100-SS | 1" | 5" to 12" | 1" | 1-3/4" | 6000 | 1 | 10 |
| P-125-SS | 1-1/4" | 5" to 12" | 1-1/4" | 2-1/8" | 6000 | 1 | 5 |
| P-150-SS | 1-1/2" | 5" to 12" | 1-1/2" | 2-1/2" | 6000 | 1 | 4 |
| P-200-SS | 2" | 5" to 12" | 2" | 3-1/8" | 6000 | 1 | 4 |

PRESSURIZED PITLESS ADAPTERS

For installations requiring a pressurized point of attachment. A small hole between the internal and external gaskets ensures a positive pressure and seal to the well casing. Approved for use in the state of Illinois.

| Part No. | Size | Well Casing Size | Drop Pipe Size | Hole Saw Size | Maximum Load - Lbs | Quantity | |
|----------|------|------------------|----------------|---------------|--------------------|----------|----|
| | | | | | | L1 | L2 |



Bronze, Boshart

- NSF/ANSI 372 Certified



| | | | | | | | |
|------------|--------|-----------|--------|--------|------|----|--|
| PA-100-PNL | 1" | 5" to 12" | 1" | 1-3/4" | 2000 | 16 | |
| PA-125-PNL | 1-1/4" | 5" to 12" | 1-1/4" | 2-1/8" | 2000 | 10 | |

Contact your sales rep for any further information

Toll Free: 1-800-561-3164

boshart.com

TAPPED PITLESS ADAPTERS

Boshart's tapped pitless adapters are designed for underground tanks / dirty water to make service or replacement easier. They feature gaskets for sealing on the casing and a 1/4" FPT tapping.

| Part No. | Primary Material | Well Casing Size | Drop Pipe Size | Hole Saw Size | Maximum Load - Lbs | Quantity L1 L2 |
|----------|------------------|------------------|----------------|---------------|--------------------|----------------|
|----------|------------------|------------------|----------------|---------------|--------------------|----------------|



1"

These tapped pitless adapters are for underground water well tank installations. The tapping provides a means to connect poly tubing to the pressure switch, located near the buried tank.

| | | | | | | |
|------------|---------------------|-----------|----|--------|------|----|
| P-100-SS-T | 304 Stainless Steel | 5" to 12" | 1" | 1-3/4" | 6000 | 18 |
| PA-800-TNL | Bronze | 5" to 12" | 1" | 1-3/4" | 900 | 16 |

1-1/4"

These are for dirty water applications. The tapping provides a means to connect a 1/4" pipe to the pitless to allow for easy removal of the pitless unit and pump. The pipe is guided by a rail / guide system (not included) that aligns the pitless elbow with the pitless slide when reinstalling.

| | | | | | | |
|------------|---------------------|-----------|--------|--------|------|----|
| P-125-SS-T | 304 Stainless Steel | 5" to 12" | 1-1/4" | 2-1/8" | 6000 | 8 |
| PA-125-TNL | Bronze | 5" to 12" | 1-1/4" | 2-1/8" | 2000 | 10 |

2"

These are for dirty water applications. The tapping provides a means to connect a 1/4" pipe to the pitless to allow for easy removal of the pitless unit and pump. The pipe is guided by a rail / guide system (not included) that aligns the pitless elbow with the pitless slide when reinstalling.

| | | | | | | |
|------------|---------------------|---------------|----|--------|------|---|
| P-200-SS-T | 304 Stainless Steel | 5" to 12" | 2" | 3-1/8" | 6000 | 4 |
| PA-200-TNL | Bronze | 5-5/8" to 12" | 2" | 3-1/8" | 5000 | 4 |

CLAMP ON PITLESS ADAPTERS

Clamp on pitless adapters clamp around the well casing. They have a neoprene gasket for sealing the housing to the outside of the well casing and is held in place with stainless steel straps and hardware.

| Part No. | Well Casing O.D. | Drop Pipe Size | Maximum Load - Lbs | Quantity L1 L2 |
|----------|------------------|----------------|--------------------|----------------|
|----------|------------------|----------------|--------------------|----------------|



MAASS

| | | | | |
|----------------|-------------|--------|------|--|
| 09-4JC1NL | 4-1/2" | 1" | 4000 | |
| 09-5ODJC1NL | 4.95" to 5" | 1" | 4000 | |
| 09-5JC1NL | 5-9/16" | 1" | 4000 | |
| 09-6ODJC1NL | 5.9" to 6" | 1" | 4000 | |
| 09-6JC1NL | 6-5/8" | 1" | 4000 | |
| 09-7JC1NL | 7" | 1" | 4000 | |
| 09-4JC1.25NL | 4-1/2" | 1-1/4" | 4000 | |
| 09-5JC1.25NL | 5-9/16" | 1-1/4" | 4000 | |
| 09-5ODJC1.25NL | 4.95" to 5" | 1-1/4" | 4000 | |
| 09-6JC1.25NL | 6-5/8" | 1-1/4" | 4000 | |
| 09-6ODJC1.25NL | 5.9" to 6" | 1-1/4" | 4000 | |
| 09-7JC1.25NL | 7" | 1-1/4" | 4000 | |

WELD ON PITLESS ADAPTERS

Weld on pitless adapters are designed for shallow or deep settings and high working pressures. They have a 8° slip fitting for easy installation and removal of the insert. No obstruction is left in the well casing when the insert is pulled out.



| Part No. | Well Casing O.D. | Drop Pipe Size | Maximum Load - Lbs | Quantity | |
|-------------|------------------|----------------|--------------------|----------|----|
| | | | | L1 | L2 |
| MAASS | | | | | |
| 09-4J1.25NL | 4" to 5" | 1-1/4" | 5000 | | |
| 09-4J1.5NL | 4" to 5" | 1-1/2" | 5000 | | |
| 09-6J1.5NL | 6" or larger | 1-1/2" | 5000 | | |
| 09-5J2NL | 5" | 2" | 6000 | | |
| 09-6J2NL | 6" or larger | 2" | 5000 | | |
| 09-6J2.5NL | 6" or larger | 2-1/2" | 8000 | | |
| 09-8J3NL | 8" or larger | 3" | 10000 | | |
| 09-10J4NL | 10" or larger | 4" | 16000 | | |

WRAP AROUND PITLESS ADAPTERS - PVC CASING

Wrap around pitless adapters come with a strap that wraps around a PVC well casing to secure it in place.

PITLESS ADAPTERS,
WELL CAPS & WELL SEALS



| Part No. | Well Casing O.D. | Well Casing I.D. | Drop Pipe Size | Maximum Load - Lbs | Quantity | |
|----------------|---------------------|---------------------|----------------|-----------------------|----------|----|
| | | | | | L1 | L2 |
| Dicken | | | | | | |
| CW-4-10-WANL | 4-1/2" | 4" | 1" | 2000 | 6 | |
| CW-4.5-10-WANL | 5" | 4-1/2" | 1" | 2000 | 6 | |
| CW-5-10-WANL | 5-9/16" | 5" | 1" | 2000 | 6 | |

CLEAR WAY PITLESS ADAPTERS - STEEL CASING

Clear way pitless adapters come with a strap that wraps around a steel well casing to secure it in place.



| Part No. | Well Casing O.D. | Well Casing I.D. | Drop Pipe Size | Maximum Load - Lbs | Quantity | |
|---------------|---------------------|---------------------|----------------|-----------------------|----------|----|
| | | | | | L1 | L2 |
| Dicken | | | | | | |
| CW-4-10NL | 4-1/2" | 4" | 1" | 2000 | 6 | |
| CW-5-10NL | 5" or 5-9/16" | 4-1/2" or 5" | 1" | 2000 | 6 | |
| CW-6-10NL | 6" or 6-5/8" | 5-5/8" or 6" | 1" | 2000 | 6 | |

CONCRETE TILE PITLESS ADAPTERS

Concrete tile pitless adapters have an extended shank to allow the pitless slide to be installed through a cement casing with a maximum thickness of 3". The 1-1/4" adapter is ideal for sewage disconnects on grinder pumps in cement tanks.



| Part No. | Size | Drop Pipe Size | Hole Saw Size | Maximum Load - Lbs | Quantity | |
|-----------------|--------|----------------|---------------|-----------------------|----------|----|
| | | | | | L1 | L2 |
| Bronze, Boshart | | | | | | |
| PA-100-CTNL | 1" | 1" | 1-3/4" | 2000 | 12 | |
| PA-125-CTNL | 1-1/4" | 1-1/4" | 2-1/8" | 2000 | 10 | |


Contact your sales rep for any further information

Toll Free: 1-800-561-3164
boshart.com

DOUBLE DROP PIPE PITLESS ADAPTERS

Double drop pipe pitless adapters allow for two pipes to go down the well, generally used in jet pump applications.

| Part No. | Well Casing Size | Drop Pipe Size | Hole Saw Size | Maximum Load - Lbs | Quantity | |
|--------------------------------------|------------------|----------------|-----------------|--------------------|----------|----|
| | | | | | L1 | L2 |
| Dicken | | | | | | |
| LD-2XNL | 4-1/2" to 12" | 1" & 1-1/4" | 1-3/4" & 2-1/8" | 2000 | 6 | |
| Boshart | | | | | | |
| • Water System Council Listed PAS-97 | | | | | | |
| PA-2XNL | 4-1/2" to 12" | 1" & 1-1/4" | 1-3/4" & 2-1/8" | 2000 | 6 | |



Water Systems Council
AWSE Standard #1000-2010
WSC Standard PAS-97 (2019)



BRONZE WIRE SPUD

Boshart's wire spud are attached to a well casing, for many reasons including bulkhead fittings, electrical conduit and well drain. The rubber gasket prevents any ground water contamination. Provide long life and durability in aggressive well conditions.

| Part No. | Size | Quantity | |
|----------|------|----------|----|
| | | L1 | L2 |
| WS-100 | 1" | 16 | |



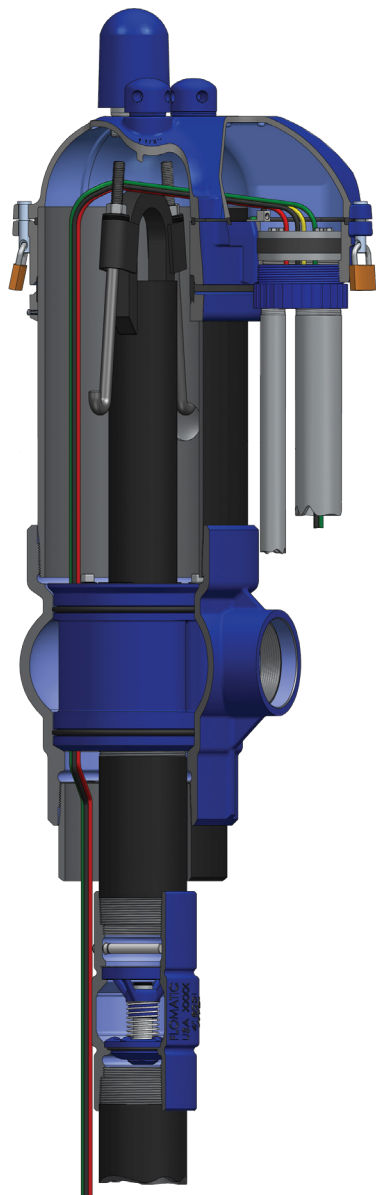
PITLESS ADAPTER ACCESSORIES

These accessories are for pitless adapters.

| Part No. | Size | Description | Quantity | |
|---|--------|--|----------|-----|
| | | | L1 | L2 |
| Hole Saw | | | | |
| The high speed cutting edge is electron-beam welded to a tough alloy back. These hole saws cut clean and accurately through virtually any machinable material. Knockout holes allow for easy removal of the cores. Contact inside sales for additional sizes. | | | | |
| 28-HS134 | 1-3/4" | Use to install 1" pitless adapters | | |
| 28-HS212 | 2-1/2" | Use to install 1-1/2" pitless adapters | | |
| 28-HS218 | 2-1/8" | Use to install 1-1/4" pitless adapters | | |
| 28-HS318 | 3-1/8" | Use to install 2" pitless adapters | | |
| Pilot Drill | | | | |
| Replacement pilot drill for arbor and hole saws. | | | | |
| 28-HSPD | 1/4" | | | 10 |
| Quick Change Arbor | | | | |
| This quick change arbor provides fast interchanging of hole saws without arbor removal from chuck. The hex shank prevents slippage in chuck. For hole saws 1-1/4" to 6" in diameter. | | | | |
| 28-HSA | 7/16" | Hex Shank | | |
| Silicone Lubricant | | | | |
| This silicone lubricant retains it's paste like consistency and will not soften or flow over the temperature range listed. It is highly water repellent and resistant to oxidation. Provides a mild chemical barrier coating. | | | | |
| P-LUBE | 4 oz. | | | 100 |



INDUSTRIAL PITLESS UNITS



Boshart's Industrial Pitless Units are designed and precision-machined for heavy duty municipal and industrial water well applications.

Benefits include:

- Quick Installation
- Easy to Service
- Economical
- Sanitary
- Frost Proof
- Durable
- Maximum Corrosion Protection
- Readily Available
- Certified to Industry Standards
 - NSF/ANSI/CAN Standard 61 Certified
 - NSF/ANSI Standard 372 Certified
 - ASSE Standard #1093-2019, Water System Council Standard PAS-97

Please contact inside sales for more information on our industrial pitless units and accessories. Full details are available in our Booklet, and request forms available upon request.



Part Number Convention:

P 08 D W B 6 F 4 F 4 N C

| | | | | | | | | | | | | |
|---|----|---|---|---|---|---|---|---|---|---|---|--|
| P | 08 | D | W | B | 6 | F | 4 | F | 4 | N | C | Well Cap: C = Cast Iron, N = No Cap, |
| | | | | | | | | | | | | Well / Spool Type: N = Normal Well (Open Through Passages) F = Flowing Well (Closed Spool with Tapings for Cable Seals). |
| | | | | | | | | | | | | Discharge Connection Size. |
| | | | | | | | | | | | | Discharge Connection Type (FPT). |
| | | | | | | | | | | | | Drop Pipe Connection Size. |
| | | | | | | | | | | | | Drop Pipe Connection Type (FPT). |
| | | | | | | | | | | | | Bury Depth (feet) 3', 4', 5', 6', 7', 8', 9', 10' |
| | | | | | | | | | | | | Upper Barrel Type: "B" = (Black Painted Steel) Standard/ Schedule 40 0.28" wall "I" = (Black Painted Steel) with Isolation Flange "S" = (304 Stainless Steel) Schedule 40 0.25" wall "H" = (304 Stainless Steel) Standard / Schedule 40 0.28" wall "P" = (PVC) Schedule 40 0.28" wall All are supplied with Hold-Down Hook / Torque Arrestor Assemblies |
| | | | | | | | | | | | | Well Casing Connection = W (Weld Nipple) as standard option. |
| | | | | | | | | | | | | Material: D (Ductile Iron) or S (Stainless Steel). |
| | | | | | | | | | | | | Well Casing Size. 5', 6', 7', 8', 10' and 12' |
| | | | | | | | | | | | | Pitless Unit (Spool Type). |

Contact your sales rep for any further information

Toll Free: 1-800-561-3164
boshart.com

PLAIN WELL CAPS

These heavy duty plain well caps use stainless steel screws for securing the cap to the well casing. A well log is provided inside each cap to record installation data and specifications.



| Part No. | Well Casing O.D. | Well Casing I.D. | Quantity | |
|---|------------------|------------------|----------|----|
| | | | L1 | L2 |
| Aluminum, Boshart • 3 set screws for securing | | | | |
| WCP-A06 | 6-5/8" | 6" | 24 | |
| Aluminum, Dicken • 1 set screw for securing | | | | |
| PC-4 | 4-1/2" | 4" | 36 | |
| PC-566 | 6" or 6-5/8" | 5-5/8" or 6" | 21 | |
| PC-66 | 7" | 6-5/8" | 21 | |



PITLESS ADAPTERS,
WELL CAPS & WELL SEALS

CONDUIT WELL CAPS

Boshart's conduit well caps are designed to provide extra clearance for pump cable. They have three stainless steel set screws for securing the cap to the well casing and one stainless steel screw to secure the conduit pipe. A well log is provided inside each cap to record installation data and specifications.



| Part No. | Well Casing O.D. | Well Casing I.D. | Conduit Connection | Quantity | |
|--|------------------|------------------|--------------------|----------|----|
| | | | | L1 | L2 |
| Aluminum, Standard Boshart | | | | | |
| WCC-A04 | 4-1/2" | 4" | 1" FPT | 36 | |
| WCC-A045 | 5" | 4-1/2" | 1" FPT | 30 | |
| WCC-A05 | 5-9/16" | 5" | 1" FPT | 30 | |
| WCC-A056 | 6" | 5-5/8" | 1" FPT | 30 | |
| WCC-A06 | 6-5/8" | 6" | 1" FPT | 20 | |
| WCC-A066 | 7" | 6-5/8" | 1" FPT | 20 | |
| WCC-A08 | 8-5/8" | 8" | 1" FPT | 16 | |
| WCC-A10 | 10-3/4" | 10" | 1" FPT | 10 | |
| Aluminum, Locking Boshart • Lock not included | | | | | |
| WCCL-A06 | 6-5/8" | 6" | 1" FPT | 20 | |
| Cast Iron, Powder Coat Painted Boshart | | | | | |
| CC-6-CI | 6-5/8" | 6" or 6-1/4" | 1" FPT | 12 | |



WTC SERIES WATERTIGHT WELL CAPS

Boshart's watertight well caps are easy to install and provide easy access for maintenance. They feature large screened air vents making them vermin proof. The design offers greater clearance for submersible pump cable and each well cap has a grounding terminal with a bolt. Two O-rings ensure a reliable watertight seal both between the well casing & retainer ring as well as between the seal cover & retainer ring. Stainless steel hardware is used for maximum corrosion resistance. A well log is provided inside each cap to record installation data and specifications. Each well cap has a grounding terminal with a bolt.



• Water System Council Listed PAS-97

PITLESS ADAPTERS,
WELL CAPS & WELL SEALS

| Part No. | Well Casing O.D. | Well Casing I.D. | Conduit Connection | Air Vent | Quantity | |
|----------|---------------------|------------------|-----------------------|----------|----------|----|
| | | | | | L1 | L2 |

For Steel or PVC Well Casings Aluminum, Standard



| | | | | | | |
|------------|---------|----|------------|----------|----|--|
| WTC-A04 | 4-1/2" | 4" | 1" FPT | (2) 3/4" | 16 | |
| WTC-A05 | 5-9/16" | 5" | 1" FPT | (2) 3/4" | 12 | |
| WTC-A06 | 6-5/8" | 6" | 1" FPT | (2) 3/4" | 12 | |
| WTC-A06-12 | 6-5/8" | 6" | 1-1/4" FPT | (2) 3/4" | 12 | |

For Steel or PVC Well Casings Aluminum, Powder Coat Painted



| | | | | | | |
|-----------------|--------|----|------------|----------|----|--|
| WTC-A06-12-BLUE | 6-5/8" | 6" | 1-1/4" FPT | (2) 3/4" | 12 | |
| WTC-A06-BLUE | 6-5/8" | 6" | 1" FPT | (2) 3/4" | 12 | |

For Steel or PVC Well Casings Cast Iron, Powder Coat Painted



| | | | | | | |
|------------|--------|----|------------|----------|---|--|
| WTC-C06 | 6-5/8" | 6" | 1" FPT | (2) 3/4" | 6 | |
| WTC-C06-12 | 6-5/8" | 6" | 1-1/4" FPT | (2) 3/4" | 6 | |

For Steel or PVC Well Casings PVC & Aluminum, Standard



| | | | | | | |
|----------|--------|----|--------|----------|----|--|
| WTC-PA06 | 6-5/8" | 6" | 1" FPT | (2) 3/4" | 12 | |
|----------|--------|----|--------|----------|----|--|

For PVC Well Casings ABS, Glue-on



• WTC-G-P0625-06 includes a casing adapter that can be glued onto the well casing for flexibility where casing sizes may vary.

| | | | | | | |
|----------------|----------------|--------------|--------|----------|----|----|
| WTC-G-P0625 | 6.9" | 6-1/4" | 1" FPT | (2) 3/4" | 12 | |
| WTC-G-P0625-06 | 6-5/8" or 6.9" | 6" or 6-1/4" | 1" FPT | (2) 3/4" | 1 | 12 |

For PVC Well Casings Aluminum & ABS, Glue-on



• WTC-G-AP0625-06 includes a casing adapter that can be glued onto the well casing for flexibility where casing sizes may vary.

| | | | | | | |
|-----------------|----------------|--------------|--------|----------|----|----|
| WTC-G-AP0625 | 6.9" | 6-1/4" | 1" FPT | (2) 3/4" | 12 | |
| WTC-G-AP0625-06 | 6-5/8" or 6.9" | 6" or 6-1/4" | 1" FPT | (2) 3/4" | 1 | 12 |

Contact your sales rep for any further information

Toll Free: 1-800-561-3164
boshart.com

WTMLC SERIES WATERTIGHT WELL CAPS

Boshart's watertight miracle locking well caps are easy to install and provide easy access for maintenance. They feature large screened air vents making them vermin proof. The design offers greater clearance for submersible pump cable and each well cap has a grounding terminal with a bolt. Two O-rings ensure a reliable watertight seal both between the well casing & retainer ring as well as between the seal cover & retainer ring. Stainless steel hardware is used for maximum corrosion resistance. A well log is provided inside each cap to record installation data and specifications.

The locking feature provides a secure & tamper-proof installation. Lock not included.

• Water System Council Listed PAS-97



| Part No. | Well Casing O.D. | Well Casing I.D. | Conduit Connection | Air Vent | Quantity | |
|----------|------------------|------------------|--------------------|----------|----------|----|
| | | | | | L1 | L2 |

For Steel or PVC Well Casings Aluminum, Locking



| | | | | | | |
|--------------|---------|--------|------------|----------|----|--|
| WTMLC-A04 | 4-1/2" | 4" | 1" FPT | (2) 3/4" | 20 | |
| WTMLC-A045 | 5" | 4-1/2" | 1" FPT | (2) 3/4" | 16 | |
| WTMLC-A05 | 5-9/16" | 5" | 1" FPT | (2) 3/4" | 16 | |
| WTMLC-A06 | 6-5/8" | 6" | 1" FPT | (2) 3/4" | 12 | |
| WTMLC-A06-12 | 6-5/8" | 6" | 1-1/4" FPT | (2) 3/4" | 12 | |
| WTMLC-A066 | 7" | 6-5/8" | 1" FPT | (2) 3/4" | 12 | |

For Steel or PVC Well Casings Aluminum, Locking - Powder Coat Paint



| | | | | | | |
|-----------------|---------|--------|--------|----------|----|--|
| WTMLC-A045-BLUE | 5" | 4-1/2" | 1" FPT | (2) 3/4" | 16 | |
| WTMLC-A056-BLUE | 6" | 5-5/8" | 1" FPT | (2) 3/4" | 16 | |
| WTMLC-A05-BLUE | 5-9/16" | 5" | 1" FPT | (2) 3/4" | 16 | |
| WTMLC-A06-BLUE | 6-5/8" | 6" | 1" FPT | (2) 3/4" | 12 | |

WELL CAP CASING ADAPTER

This well cap casing adapter is glued onto a 6-5/8" PVC well casing to allow the use of a 6.9" well cap.

Primary Material: PVC



| Part No. | Size | Quantity | |
|----------|------|----------|----|
| | | L1 | L2 |



| | | | |
|----------------|---------------|----|--|
| WCCA-G0625-G06 | 6.9" x 6-5/8" | 12 | |
|----------------|---------------|----|--|

WTCC SERIES WATERTIGHT WELL CAPS

Boshart's watertight well caps have a wide gasket that provides a positive compression seal between the well casing and cap as well as the cap cover and retainer ring. This well cap is designed with a deep pocket for sealing unevenly cut casings as the gasket will seal as far as 1-1/2" from the top of the casing. Compression is achieved by tightening five bolts. They feature two large screened air vents making them vermin proof. This design offers increased clearance for submersible pump cable. Locking feature provides a secure/ tamper proof installation. Lock not included.

• Water System Council Listed PAS-97



| Part No. | Well Casing O.D. | Well Casing I.D. | Conduit Connection | Air Vent | Quantity | |
|---|---------------------|------------------|-----------------------|----------|----------|----|
| | | | | | L1 | L2 |
| For Steel or PVC Well Casings Cast Iron, Locking - Powder Coat Paint | | | | | | |
| WTCC-66-CI | 7" | 6-5/8" | 1-1/4" FPT | (2) 3/4" | 6 | |
| WTCC-6-CI | 6-5/8" | 6" or 6-1/4" | 1" FPT | (2) 3/4" | 6 | |
| WTCC-6-CI-12 | 6-5/8" | 6" or 6-1/4" | 1-1/4" FPT | (2) 3/4" | 6 | |

WTCL SERIES WATERTIGHT WELL CAPS

Boshart's watertight well caps are easy to install and easy to access for maintenance. They feature large screened air vents making them vermin proof. This design offers greater clearance for submersible pump cable and the O-ring system ensures a reliable watertight seal. Stainless steel hardware ensures maximum corrosion resistance.



| Part No. | Well Casing O.D. | Well Casing I.D. | Conduit Connection | Air Vent | Quantity | |
|--|---------------------|------------------|-----------------------|----------|----------|----|
| | | | | | L1 | L2 |
| For Steel or PVC Well Casings Aluminum, Locking | | | | | | |
| WTCL-A08 | 8-5/8" | 8" | 1-1/4" FPT | (2) 3/4" | 8 | |
| WTCL-A10 | 10-3/4" | 10" | 1-1/4" FPT | (2) 3/4" | 5 | |
| WTCL-A12 | 12-3/4" | 12" | 1-1/4" FPT | (2) 3/4" | 5 | |

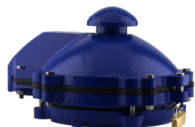
WTCL SERIES PREMIUM WATERTIGHT WELL CAP

Boshart's premium watertight well cap installs fast & simply allowing for easy access to the well for maintenance. The three piece design allows the cover to be removed without disturbing the seal to the well casing, or interfering with the wiring / conduit. A blue powder coat paint is baked on to ensure superior quality.

It features a thick, heavy duty SBR gasket and a deep socket to ensure the watertight seal is down from the top of the well casing. All hardware is stainless steel for maximum corrosion resistance. This cap is supplied with a grounding terminal and the metal cap is bonded to the steel casing with set screws.

A 2" mushroom venting cap with a steel mesh makes them vermin proof and a locking feature provides a secure/ tamper proof design. Lock is not included. Cap can be personalized by means of an engraved aluminum plate which is affixed by drive rivets.

• Water Systems Council Listed PAS-97



| Part No. | Well Casing O.D. | Well Casing I.D. | Conduit Connection | Air Vent | Quantity L1 L2 |
|--------------------------------------|---------------------|------------------|-----------------------|------------|----------------------|
| For Steel or PVC Well Casings | | | | | |
| Cast Iron | | | | | |
| WTCL-C08 | 8-5/8" | 8" | 2" FPT | (1) 2" MVC | 100 |

Contact your sales rep for any further information

Toll Free: 1-800-561-3164

boshart.com

WTCL SERIES PREMIUM WATERTIGHT WELL CAPS

Boshart's premium watertight well caps provide easy access to the well without interfering with the seal to the casing or conduit wiring. These caps have a three piece design and have a blue powder coat paint that is baked on to ensure superior quality. They feature thick, heavy duty SBR gaskets and all stainless steel hardware for maximum corrosion resistance.

The caps are supplied with a grounding terminal and the metal cap is bonded to the steel casing with set screws. Venting cap has a steel mesh to ensure they are vermin proof and two accessory ports for field installation of accessories. A locking feature provides a secure / tamper proof design.

Stop tabs allow for easy and accurate positioning of the lower assembly.

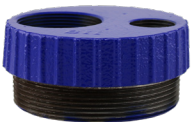





• Water Systems Council Listed PAS-97



| Part No. | Well Casing O.D. | Well Casing I.D. | Conduit Connection | Quantity | |
|--------------------------------------|------------------|------------------|--------------------|----------|----|
| | | | | L1 | L2 |
| For Steel or PVC Well Casings | | | | | |
| Cast Iron | | | | | |
| WTCL-C10 | 10-3/4" | 10" | 4" FPT | | |
| WTCL-C12 | 12-3/4" | 12" | 4" FPT | | |
| WTCL-C14 | 14" | 13.18" | 4" FPT | | |

PREMIUM WATERTIGHT WELL CAP ACCESSORIES

These accessories are for the premium watertight cast iron well caps. For more information please contact inside sales.

| Part No. | Description | Quantity | |
|---|---|-------------------------------|-----|
| | | L1 | L2 |
|  | Conduit Adapter | | |
| | Cast Iron, These adapters convert the 4" FPT conduit connection to (1) 2" FPT and (1) 1" FPT conduit connections allowing for the separation of power cables and other sensor wiring. They are coated with a durable blue powder coat paint. | | |
| | WTCL-CA40-2010 | | 12 |
|  | Cable Seal Assembly | | |
| | Stainless Steel, These cable seal assemblies provide a watertight / vermin proof barrier between the conduit piping and the well chamber of the well cap. The plates and hardware are stainless steel for maximum corrosion resistance. Outside diameter is 4" and the gasket material is SBR rubber. | | |
| | WTCL-CS40-312-4 | Cable Range: 0.14" to 0.311" | |
| | WTCL-CS40-437-4 | Cable Range: 0.312" to 0.437" | |
| | WTCL-CS40-563-4 | Cable Range: 0.437" to 0.563" | |
| | WTCL-CS40-700-4 | Cable Range: 0.563" to 0.7" | |
|  | Vent Cap | | |
| | Cast Iron, Vent caps are for the premium watertight well caps and feature a 60 mesh stainless steel screen. They have a 2" MPT thread and come with a cotter key to lock the vent in place. A blue powder coat paint is applied for durability. | | |
| | WTCL-VC-08 | For 8" Well Cap | |
| | WTCL-VC-1014 | For 10", 12" or 14" Well Caps | |
|  | Locking Pin | | |
| | 304 Stainless Steel, This locking pin is for accessory ports on the 10", 12" or 14" WTCL-C series well caps. A 5/16" hole through the pin is for a lock. | | |
| | WTCL-CLP | | 100 |
|  | Depth Tester Kit | | |
| | Depth tester kits are for measuring the level of water that is in the well. | | |
| | WCDTK | | |
|  | Water Sampling Valve Kit | | |
| | Water sampling valves provide a means to acquire a water sample at the well head. This water sampling valve kit has a non-freeze design which allows for sampling in all seasons. The kit comes complete with a valve, lockable cap and union connection for quick and easy installation. | | |
| | WSVK05-12 | | |

PLASTIC WELL SEALS

Plastic well seals allow for larger conduit cables. Grommet kits include both a round and slotted gasket for twisted or flat jacketed pump cables.

Options for a split well seal (add S at end of part number) or stainless steel hardware (add -SH at end of part number) are available, contact inside sales for more information.



| Part No. | Grommet Kit Included | Well Casing I.D. | Conduit Connection | Vent Size | Drop Pipe Size | Quantity | |
|----------|----------------------|------------------|--------------------|-----------|----------------|----------|----|
| | | | | | | L1 | L2 |

Blank

- Supplied with a plug for the conduit connection



| | | | | | | | |
|-------|-----|--------|----------|------|--|---|----|
| WSP40 | Yes | 4" | 3/4" FPT | 1/2" | | 1 | 16 |
| WSP42 | Yes | 4-1/4" | 3/4" FPT | 1/2" | | 1 | 16 |
| WSP50 | Yes | 5" | 1" FPT | 1/2" | | 1 | 8 |
| WSP52 | Yes | 5-1/4" | 1" FPT | 1/2" | | 1 | 8 |
| WSP60 | Yes | 6" | 1" FPT | 1/2" | | 1 | 8 |
| WSP62 | Yes | 6-1/4" | 1" FPT | 1/2" | | 1 | 8 |

Single Hole



| | | | | | | | |
|---------|-----|--------|----------|------|--------|---|----|
| WSP4010 | Yes | 4" | 3/4" FPT | 1/2" | 1" | 1 | 16 |
| WSP4012 | Yes | 4" | 3/4" FPT | 1/2" | 1-1/4" | 1 | 16 |
| WSP4015 | Yes | 4" | 3/4" FPT | 1/2" | 1-1/2" | 1 | 16 |
| WSP4210 | Yes | 4-1/4" | 3/4" FPT | 1/2" | 1" | 1 | 16 |
| WSP4212 | Yes | 4-1/4" | 3/4" FPT | 1/2" | 1-1/4" | 1 | 16 |
| WSP4215 | Yes | 4-1/4" | 3/4" FPT | 1/2" | 1-1/2" | 1 | 16 |
| WSP4220 | Yes | 4-1/4" | 3/4" FPT | 1/2" | 2" | 1 | 16 |
| WSP5010 | Yes | 5" | 1" FPT | 1/2" | 1" | 1 | 8 |
| WSP5012 | Yes | 5" | 1" FPT | 1/2" | 1-1/4" | 1 | 8 |
| WSP5015 | Yes | 5" | 1" FPT | 1/2" | 1-1/2" | 1 | 8 |
| WSP5020 | Yes | 5" | 1" FPT | 1/2" | 2" | 1 | 8 |
| WSP5210 | Yes | 5-1/4" | 1" FPT | 1/2" | 1" | 1 | 8 |
| WSP6010 | Yes | 6" | 1" FPT | 1/2" | 1" | 1 | 8 |
| WSP6012 | Yes | 6" | 1" FPT | 1/2" | 1-1/4" | 1 | 8 |
| WSP6015 | Yes | 6" | 1" FPT | 1/2" | 1-1/2" | 1 | 8 |
| WSP6020 | Yes | 6" | 1" FPT | 1/2" | 2" | 1 | 8 |
| WSP6210 | Yes | 6-1/4" | 1" FPT | 1/2" | 1" | 1 | 8 |
| WSP6212 | Yes | 6-1/4" | 1" FPT | 1/2" | 1-1/4" | 1 | 8 |
| WSP6215 | Yes | 6-1/4" | 1" FPT | 1/2" | 1-1/2" | 1 | 8 |
| WSP6220 | Yes | 6-1/4" | 1" FPT | 1/2" | 2" | 1 | 8 |

Raised Supports, Single Hole

- This well seal has raised supports which the drop pipe fitting rests on, this keeps the fittings above the nuts and conduit bushing making it possible to incorporate a 3/4" cable hole.



| | | | | | | | |
|---------|-----|----|----------|------|----|---|----|
| WSP4020 | Yes | 4" | 3/4" FPT | 1/2" | 2" | 1 | 16 |
|---------|-----|----|----------|------|----|---|----|

Double Hole



| | | | | | | | |
|-----------|-----|--------|--|------|-------------|---|----|
| WSP401210 | Yes | 4" | | 1/2" | 1-1/4" x 1" | 1 | 16 |
| WSP421210 | Yes | 4-1/4" | | 1/2" | 1-1/4" x 1" | 1 | 16 |
| WSP501210 | Yes | 5" | | 1/2" | 1-1/4" x 1" | 1 | 8 |
| WSP601210 | Yes | 6" | | 1/2" | 1-1/4" x 1" | 1 | 8 |
| WSP601212 | Yes | 6" | | 1/2" | 1-1/4" | 1 | 8 |
| WSP621210 | Yes | 6-1/4" | | 1/2" | 1-1/4" x 1" | 1 | 8 |
| WSP621212 | Yes | 6-1/4" | | 1/2" | 1-1/4" | 1 | 8 |

Contact your sales rep for any further information

Toll Free: 1-800-561-3164

boshart.com

CAST IRON WELL SEALS

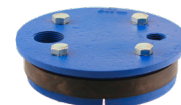
Boshart's cast iron well seals allow for larger conduit cables. Well seal modifications are available, contact inside sales for more information.



| Part No. | Grommet Kit Included | Well Casing I.D. | Conduit Connection | Vent Size | Drop Pipe Size | Quantity L1 L2 |
|----------|----------------------|------------------|--------------------|-----------|----------------|-------------------|
|----------|----------------------|------------------|--------------------|-----------|----------------|-------------------|

Blank

- WS50 seal is not a solid plate



| | | | | | | |
|------|-----|--------|--------|------|--|---|
| WS40 | No | 4" | | | | |
| WS50 | Yes | 5" | 1" FPT | 1/2" | | 6 |
| WS60 | Yes | 6" | 1" FPT | 1/2" | | |
| WS62 | Yes | 6-1/4" | 1" FPT | 1/2" | | 6 |

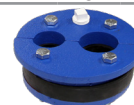
Single Hole

- WS6030 has a solid plate



| | | | | | | |
|--------|-----|--------|----------|------|--------|-----|
| WS3010 | Yes | 3" | 3/8" FPT | 1/8" | 1" | 6 |
| WS3012 | Yes | 3" | 3/8" FPT | 3/8" | 1-1/4" | |
| WS4010 | Yes | 4" | 3/4" FPT | 1/2" | 1" | 6 |
| WS4012 | Yes | 4" | 3/4" FPT | 1/2" | 1-1/4" | 6 |
| WS4015 | Yes | 4" | 3/4" FPT | 1/2" | 1-1/2" | 6 |
| WS4020 | Yes | 4" | 3/4" FPT | 1/2" | 2" | 6 |
| WS4210 | Yes | 4-1/4" | 3/4" FPT | 1/2" | 1" | 6 |
| WS4212 | Yes | 4-1/4" | 3/4" FPT | 1/4" | 1-1/4" | 16 |
| WS4510 | Yes | 4-1/2" | 1/2" FPT | 1/2" | 1" | 1 6 |
| WS4512 | Yes | 4-1/2" | 1/2" FPT | 1/2" | 1-1/4" | 1 6 |
| WS5010 | Yes | 5" | 1" FPT | 1/2" | 1" | 6 |
| WS5012 | Yes | 5" | 1" FPT | 1/2" | 1-1/4" | 6 |
| WS5015 | Yes | 5" | 1" FPT | 1/2" | 1-1/2" | 1 6 |
| WS5020 | Yes | 5" | 1" FPT | 1/2" | 2" | 6 |
| WS5510 | Yes | 5-5/8" | 3/4" FPT | 1/2" | 1" | 1 |
| WS5512 | Yes | 5-5/8" | 3/4" FPT | 1/2" | 1-1/4" | |
| WS6010 | Yes | 6" | 1" FPT | 1/2" | 1" | 6 |
| WS6012 | Yes | 6" | 1" FPT | 1/2" | 1-1/4" | 6 |
| WS6015 | Yes | 6" | 1" FPT | 1/2" | 1-1/2" | 6 |
| WS6020 | Yes | 6" | 1" FPT | 1/2" | 2" | 6 |
| WS6030 | Yes | 6" | 1" FPT | 1/2" | 3" | 6 |
| WS6210 | Yes | 6-1/4" | 1" FPT | 1/2" | 1" | 6 |
| WS6212 | Yes | 6-1/4" | 1" FPT | 1/2" | 1-1/4" | 6 |
| WS6215 | Yes | 6-1/4" | 1" FPT | 1/2" | 1-1/2" | |
| WS6220 | Yes | 6-1/4" | 1" FPT | 1/2" | 2" | 8 |

Double Hole



| | | | | | | |
|----------|----|--------|--|------|-------------|-----|
| WS301007 | No | 3" | | 1/4" | 1" x 3/4" | |
| WS401210 | No | 4" | | 1/2" | 1-1/4" x 1" | 6 |
| WS401212 | No | 4" | | 1/2" | 1-1/4" | |
| WS421210 | No | 4-1/4" | | 1/2" | 1-1/4" x 1" | 6 |
| WS451210 | No | 4-1/2" | | 1/2" | 1-1/4" x 1" | |
| WS501210 | No | 5" | | 1/2" | 1-1/4" x 1" | 6 |
| WS551210 | No | 5-5/8" | | 1/2" | 1-1/4" x 1" | 1 6 |
| WS601210 | No | 6" | | 1/2" | 1-1/4" x 1" | 6 |
| WS601212 | No | 6" | | 1/2" | 1-1/4" | |
| WS621210 | No | 6-1/4" | | 1/2" | 1-1/4" x 1" | 6 |
| WS621212 | No | 6-1/4" | | 1/2" | 1-1/4" | 6 |

Clamp Over



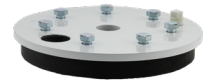
| | | | | | | |
|--------|-----|----|--|--|--------|--|
| WS2010 | No | 2" | | | 1" | |
| WS2012 | Yes | 2" | | | 1-1/4" | |

STEEL WELL SEALS

Boshart's steel well seals are solid and made from hot rolled steel. They are powder coated for a durable finish and have an extra thick rubber gland for positive sealing. These seals have large pump cable / wire holes for easy installation. Eye bolt option is available by adding -EB to the end of the part number. Contact inside sales for more information.



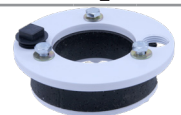
| Part No. | Grommet Kit Included | Well Casing I.D. | Conduit Connection | Vent Size | Drop Pipe Size | Maximum Load - Lbs | Quantity L1 L2 |
|--------------------|----------------------|------------------|--------------------|-----------|----------------|--------------------|----------------|
| Single Hole | | | | | | | |
| WSS3510 | No | 3-1/2" | 1/2" FPT | 1/2" | 1" | | 16 |
| WSS4010 | No | 4" to 4-1/4" | 3/4" FPT | 1/2" | 1" | 2100 | 12 |
| WSS4012 | No | 4" to 4-1/4" | 3/4" FPT | 1/2" | 1-1/4" | 2100 | 12 |
| WSS4015 | No | 4" to 4-1/4" | 3/4" FPT | 1/2" | 1-1/2" | 2100 | 12 |
| WSS4510 | No | 4-1/4" to 4-1/2" | 3/4" FPT | 1/2" | 1" | 2100 | 6 |
| WSS4512 | No | 4-1/4" to 4-1/2" | 3/4" FPT | 1/2" | 1-1/4" | 2100 | 6 |
| WSS4515 | No | 4-1/4" to 4-1/2" | 3/4" FPT | 1/2" | 1-1/2" | 2100 | 6 |
| WSS4520 | No | 4-1/4" to 4-1/2" | 1/2" FPT | 1/2" | 2" | 2100 | 6 |
| WSS5010 | No | 5" to 5-1/4" | 1" FPT | 1/2" | 1" | 1500 | 12 |
| WSS5012 | No | 5" to 5-1/4" | 1" FPT | 1/2" | 1-1/4" | 1500 | 12 |
| WSS5015 | No | 5" to 5-1/4" | 1" FPT | 1/2" | 1-1/2" | 1500 | 12 |
| WSS5020 | No | 5" to 5-1/4" | 1" FPT | 1/2" | 2" | 1500 | 12 |
| WSS6010 | No | 6" to 6-1/4" | 1" FPT | 1/2" | 1" | 1100 | 8 |
| WSS6012 | No | 6" to 6-1/4" | 1" FPT | 1/2" | 1-1/4" | 1100 | 8 |
| WSS6015 | No | 6" to 6-1/4" | 1" FPT | 1/2" | 1-1/2" | 1100 | 8 |
| WSS6020 | No | 6" to 6-1/4" | 1" FPT | 1/2" | 2" | 1100 | 8 |
| WSS6210 | No | 6-1/4" | 1" FPT | 1/2" | 1" | 1100 | 8 |
| WSS6212 | No | 6-1/4" | 1" FPT | 1/2" | 1-1/4" | 1100 | 8 |
| WSS6215 | No | 6-1/4" | 1" FPT | 1/2" | 1-1/2" | 1100 | 8 |
| WSS6220 | No | 6-1/4" | 1" FPT | 1/2" | 2" | 1100 | 8 |
| WSS7010 | No | 7" | 1-1/4" FPT | 1/2" | 1" | 2000 | 6 |
| WSS7012 | No | 7" | 1-1/4" FPT | 1/2" | 1-1/4" | 2000 | 6 |
| WSS7015 | No | 7" | 1-1/4" FPT | 1/2" | 1-1/2" | 9000 | 6 |
| WSS7020 | No | 7" | 1-1/4" FPT | 1/2" | 2" | 9000 | 6 |
| WSS7030 | No | 7" | 1-1/4" FPT | 1/2" | 3" | 9000 | 6 |
| WSS8010 | No | 8" to 8-1/4" | 1-1/4" FPT | 1/2" | 1" | 6900 | 4 |
| WSS8012 | No | 8" to 8-1/4" | 1-1/4" FPT | 1/2" | 1-1/4" | 6900 | 4 |
| WSS8015 | No | 8" to 8-1/4" | 1-1/4" FPT | 1/2" | 1-1/2" | 6900 | 4 |
| WSS8020 | No | 8" to 8-1/4" | 1-1/4" FPT | 1/2" | 2" | 6900 | 4 |
| WSS8025 | No | 8" to 8-1/4" | 1-1/4" FPT | 1/2" | 2-1/2" | 6900 | 4 |
| WSS8030 | No | 8" to 8-1/4" | 1-1/4" FPT | 1/2" | 3" | 12000 | 4 |
| WSS8040 | No | 8" to 8-1/4" | 1-1/4" FPT | 1/2" | 4" | 27000 | 4 |
| WSS10010 | No | 10" | 1-1/4" FPT | 1/2" | 1" | 2800 | 3 |
| WSS10012 | No | 10" | 1-1/4" FPT | 1/2" | 1-1/4" | 2800 | 3 |
| WSS10015 | No | 10" | 1-1/4" FPT | 1/2" | 1-1/2" | 2800 | 3 |
| WSS10020 | No | 10" | 1-1/4" FPT | 1/2" | 2" | 2800 | 3 |
| WSS10025 | No | 10" | 1-1/4" FPT | 1/2" | 2-1/2" | 16500 | |
| WSS10030 | No | 10" | 1-1/4" FPT | 1/2" | 3" | 16500 | 3 |
| WSS10040 | No | 10" | 1-1/4" FPT | 1/2" | 4" | 16500 | 3 |
| WSS10050 | No | 10" | 1" FPT | 1/2" | 5" | 34000 | 3 |
| WSS10060 | No | 10" | 1" FPT | 1/2" | 6" | 34000 | 3 |
| WSS12012 | No | 12" | 1-1/4" FPT | 1/2" | 1-1/4" | 2800 | 2 |
| WSS12015 | No | 12" | 1-1/4" FPT | 1/2" | 1-1/2" | 2800 | 2 |
| WSS12020 | No | 12" | 1-1/4" FPT | 1/2" | 2" | 6600 | 2 |
| WSS12030 | No | 12" | 1-1/4" FPT | 1/2" | 3" | 12000 | 2 |
| WSS12040 | No | 12" | 1-1/4" FPT | 1/2" | 4" | 12000 | 2 |
| WSS12050 | No | 12" | 1-1/4" FPT | 1/2" | 5" | 22000 | 2 |
| WSS12060 | No | 12" | 1-1/4" FPT | 1/2" | 6" | 22000 | 2 |



PITLESS ADAPTERS,
WELL CAPS & WELL SEALS

Raised Supports, Single Hole

• This well seal has raised supports which the drop pipe fitting rests on, this keeps the fittings above the nuts and conduit bushing making it possible to incorporate a 3/4" cable hole.



| | | | | | | | |
|---------|----|--------------|----------|------|----|------|----|
| WSS4020 | No | 4" to 4-1/4" | 3/4" FPT | 1/2" | 2" | 2100 | 12 |
|---------|----|--------------|----------|------|----|------|----|

Contact your sales rep for any further information

Toll Free: 1-800-561-3164

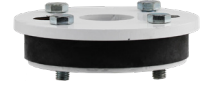
boshart.com

STEEL WELL SEALS

| Part No. | Grommet Kit Included | Well Casing I.D. | Conduit Connection | Vent Size | Drop Pipe Size | Maximum Load - Lbs | Quantity L1 L2 |
|----------|----------------------|------------------|--------------------|-----------|----------------|--------------------|----------------|
|----------|----------------------|------------------|--------------------|-----------|----------------|--------------------|----------------|

Heavy Duty, Single Hole

• WSS6030HD has raised supports which the drop pipe fitting rests on, this keeps the fittings above the nuts and conduit bushing making it possible to incorporate a 1" cable hole.



| | | | | | | | |
|-----------|----|--------------|--------|------|--------|------|---|
| WSS6010HD | No | 6" to 6-1/4" | 1" FPT | 1/2" | 1" | 9000 | 8 |
| WSS6012HD | No | 6" to 6-1/4" | 1" FPT | 1/2" | 1-1/4" | 9000 | 8 |
| WSS6015HD | No | 6" to 6-1/4" | 1" FPT | 1/2" | 1-1/2" | 9000 | 8 |
| WSS6020HD | No | 6" to 6-1/4" | 1" FPT | 1/2" | 2" | 9000 | 8 |
| WSS6030HD | No | 6" to 6-1/4" | | 1/2" | 3" | 9000 | 8 |

Double Hole



| | | | | | | | |
|-----------|----|--------|--|------|-----------------|--|----|
| WSS351210 | No | 3-1/2" | | 1/2" | 1-1/4" x 1" | | 16 |
| WSS401010 | No | 4" | | 1/2" | 1" | | |
| WSS501212 | No | 5" | | 1/2" | 1-1/4" | | |
| WSS601512 | No | 6" | | 1/2" | 1-1/2" x 1-1/4" | | |
| WSS621512 | No | 6-1/4" | | 1/2" | 1-1/2" x 1-1/4" | | 6 |

 PITLESS ADAPTERS,
WELL CAPS & WELL SEALS

WELL SEAL ACCESSORIES

These accessories are for well seals. For more information please contact inside sales.

| Part No. | Size | Description | Quantity L1 L2 |
|----------|------|-------------|----------------|
|----------|------|-------------|----------------|



Grommet Kit

Grommet kits include a bushing, round gasket and slotted gasket for twisted or flat jacketed pump cable. They create a watertight seal when the bushing is tightened to ensure no contaminated water enters the well.

| | | | |
|----------|------|--------------------|-----|
| WS-GK-07 | 3/4" | For 3/4" wire hole | 300 |
| WS-GK-10 | 1" | For 1" wire hole | 300 |



PVC Air Vent

PVC,

Air vents are screwed onto well seals for water well ventilation. These vents have four 0.04" slits on each side.

| | | | |
|--------|------|--|-----|
| WS-V05 | 1/2" | | 500 |
|--------|------|--|-----|



Steel Air Vent

Zinc Plated Steel,

Air vents are screwed onto well seals for water well ventilation. These vents have a 40 mesh stainless steel screen making them vermin proof.

| | | | |
|----------|------|--|----|
| WS-V05-G | 1/2" | | 40 |
|----------|------|--|----|