

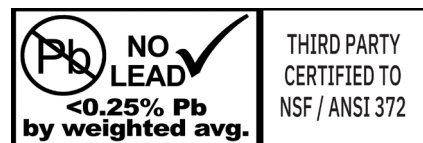
PQC SERIES - PLASTIC QUICK CONNECT FITTINGS

SPECIFICATIONS:

- Manufactured with acetal which is safe and non-toxic.
- Acetal copolymer fittings are highly durable and resistant to fatigue and creep.
- Wide range of fitting configurations are available for 1/4" and 3/8" outer diameter (O.D.) PVC, polyethylene, copper, and PEX tubing.
- Fittings are removable and re-usable. The oval collect design provides an easy grip to assemble and disassemble without damage to the tubing or fittings.
- Light weight for easy handling.
- Excellent resistance to most organic compounds, industrial chemicals, and gases.
- Gripper O-ring made from stainless steel. O-ring made from nitrile butadiene rubber (NBR).

CERTIFICATIONS:

- NSF/ANSI 51 Certified (Food Equipment Materials)
- NSF/ANSI 61 Certified (Drinking Water System Components - Health Effects)
- NSF/ANSI 372 Certified (Drinking Water System Components - Lead Content)



APPLICATIONS:

- Designed for use in water, food, beverage, and pneumatic systems.
- Provide a quick and convenient assembly solution, saving time and expense. No crimp tools, solvents, or flame are required.
- Common applications include water dispensing, filtering systems, food and beverage systems, misting, and pneumatic (air) systems.

PRESSURE AND TEMPERATURE RATING		
Temperature	1/4" O.D.	3/8" O.D.
1 °C (34 °F)	230 PSI	170 PSI
20 °C (68 °F)	230 PSI	170 PSI
65 °C (150 °F)	150 PSI	100 PSI

Pressure rating charts should be used as a guide only. For pressures or temperatures over the stated maximum independent testing by the end user is recommended. It is solely the user's responsibility to determine the suitability of the fitting for the intended service.

MAXIMUM PERMISSIBLE TORQUE		
Material	Thread Size	Max. Torque (Nm)
Acetal	1/8"-1/4"	1.5
	3/8"-1/2"	3.0

The listed values are based on an average of the maximum applied torque and should be used as a guide only. Actual results may vary.

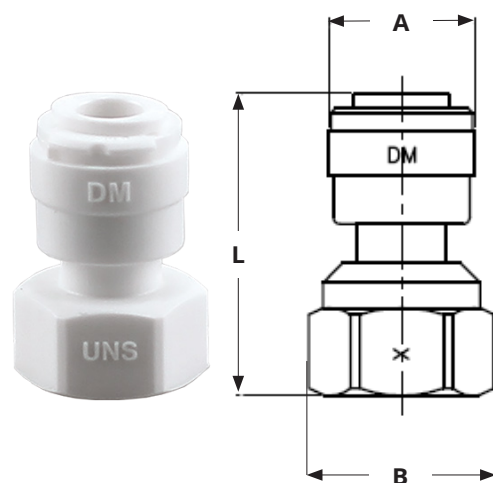
BOSHART
INDUSTRIES

25 Whaley Avenue, PO Box 310, Milverton, ON CANADA N0K 1M0
Tel: 800-561-3164

boshart.com ♦ blog.boshart.com

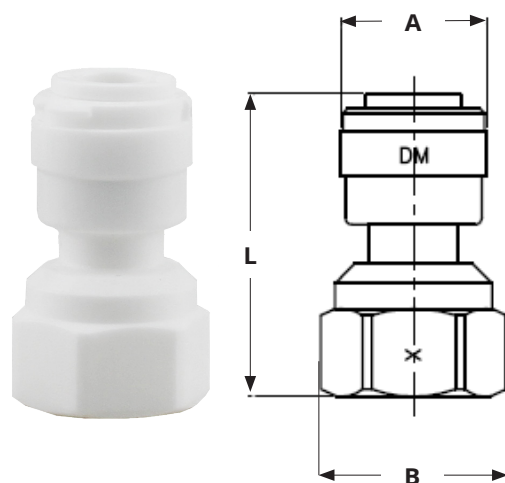
PQC-FACP SERIES - TUBE O.D. x COMP ADAPTER

DIMENSIONS							
Part No.	Size (Tube O.D. x Comp)	A		B		L	
		in	mm	in	mm	in	mm
PQC-FA0404CP	1/4" x 1/4"	0.59	15.0	0.75	19.0	1.22	31.0



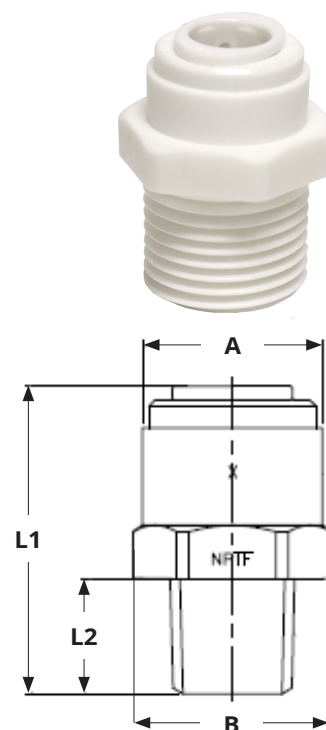
PQC-FA SERIES - TUBE O.D. x FPT ADAPTER

DIMENSIONS							
Part No.	Size (Tube O.D. x FPT)	A		B		L	
		in	mm	in	mm	in	mm
PQC-FA0404	1/4" x 1/4"	0.59	15.0	0.75	19.0	1.22	31.0



PQC-MA SERIES - TUBE O.D. x MPT ADAPTER

DIMENSIONS									
Part No.	Size (Tube O.D. x MPT)	A		B		L1		L2	
		in	mm	in	mm	in	mm	in	mm
PQC-MA0402	1/4"x1/8"	0.59	15.0	0.74	18.8	1.01	25.6	0.41	10.3
PQC-MA0404	1/4"x1/4"	0.59	15.0	0.71	18.0	1.07	27.1	0.46	11.6
PQC-MA0406	1/4"x3/8"	0.59	15.0	0.87	22.1	1.00	25.4	0.47	12.0
PQC-MA0604	3/8"x1/4"	0.78	19.9	0.86	21.9	1.35	34.2	0.50	12.8
PQC-MA0606	3/8"x3/8"	0.78	19.9	0.88	22.4	1.15	29.2	0.48	12.1
PQC-MA0608	3/8"x1/2"	0.78	19.9	1.08	27.5	1.35	34.3	0.67	17.0



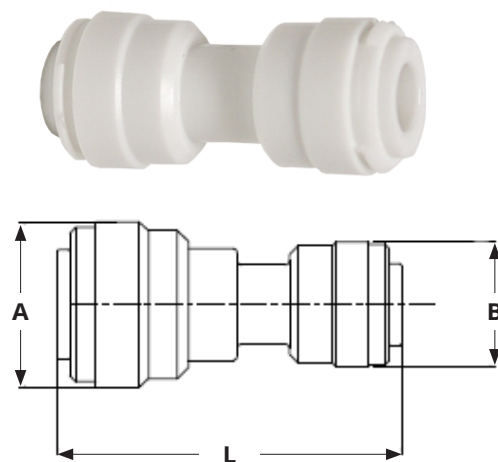
BOSHART
INDUSTRIES

25 Whaley Avenue, PO Box 310, Milverton, ON CANADA N0K 1M0
Tel: 800-561-3164

boshart.com ♦ blog.boshart.com

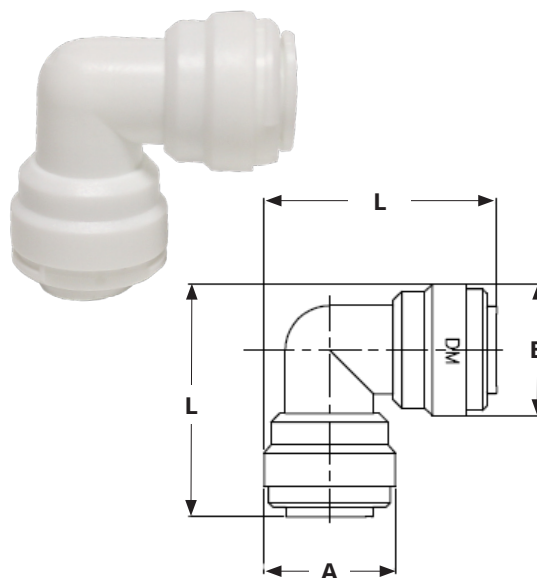
PQC-C SERIES - TUBE O.D. COUPLING

DIMENSIONS							
Part No.	Size (Tube O.D. x Tube O.D.)	A		B		L	
		in	mm	in	mm	in	mm
PQC-C04	1/4"x1/4"	0.59	15.0	0.59	15.0	1.41	35.9
PQC-C06	3/8"x3/8"	0.83	21.1	0.83	21.1	1.66	42.2
PQC-C0604	3/8"x1/4"	0.78	19.9	0.59	15.0	1.62	41.2

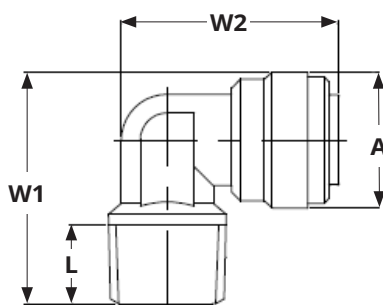


PQC-E SERIES - TUBE O.D. 90° ELBOW

DIMENSIONS							
Part No.	Size (Tube O.D. x Tube O.D.)	A		B		L	
		in	mm	in	mm	in	mm
PQC-E04	1/4"x1/4"	0.59	15.0	0.59	15.0	1.07	27.3
PQC-E06	3/8"x3/8"	0.78	19.9	0.78	19.9	1.39	35.4



PQC-ME SERIES - TUBE O.D. x MPT 90° ELBOW



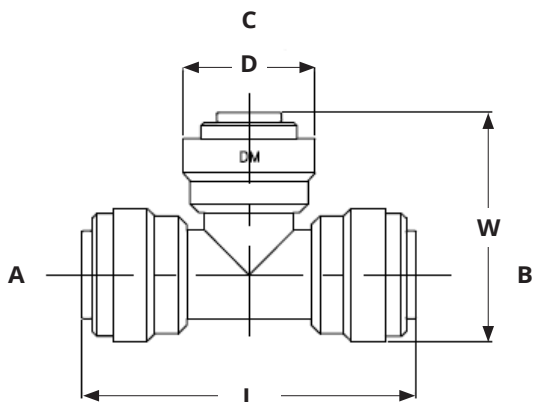
DIMENSIONS									
Part No.	Size (Tube O.D. x MPT)	A		L		W1		W2	
		in	mm	in	mm	in	mm	in	mm
PQC-ME0402	1/4"x1/8"	0.59	15.0	0.38	9.55	1.08	27.5	0.97	24.6
PQC-ME0404	1/4"x1/4"	0.59	15.0	0.45	11.5	1.23	31.3	1.05	26.6
PQC-ME0604	3/8"x1/4"	0.78	19.9	0.44	11.2	1.33	33.8	1.25	31.8
PQC-ME0606	3/8"x3/8"	0.78	19.9	0.45	11.5	1.33	33.9	1.26	32.0

BOSHART
INDUSTRIES

25 Whaley Avenue, PO Box 310, Milverton, ON CANADA N0K 1M0
Tel: 800-561-3164

boshart.com ♦ blog.boshart.com

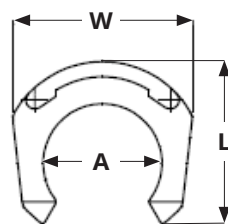
PQC-T SERIES - TUBE O.D. TEE



DIMENSIONS							
Part No.	Size (Tube O.D. AxBxC)	D		L		W	
		in	mm	in	mm	in	mm
PQC-T04	1/4"x1/4"x1/4"	0.59	15.0	1.56	39.5	1.07	27.3
PQC-T06	3/8"x3/8"x3/8"	0.79	20.1	1.99	50.6	1.39	35.3
PQC-T060604	3/8"x3/8"x1/4"	0.79	20.1	1.99	50.6	1.35	34.3

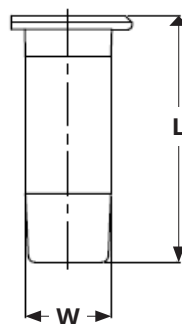
PQC-LC SERIES - TUBE O.D. CLIP

DIMENSIONS							
Part No.	Size (Tube O.D.)	A		L		W	
		in	mm	in	mm	in	mm
PQC-LC04	1/4"	0.31	7.90	0.42	10.7	0.47	12.0
PQC-LC06	3/8"	0.46	11.8	0.60	15.2	0.57	14.4



PQC-TS SERIES - TUBE O.D. TUBE SUPPORT

DIMENSIONS					
Part No.	Size (Tube O.D.)	L		W	
		in	mm	in	mm
PQC-TS04	1/4"	0.55	14.0	0.17	4.32
PQC-TS06	3/8"	0.71	18.0	0.25	6.25

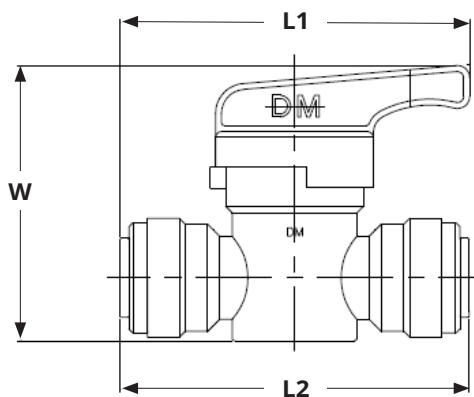


BOSHART
INDUSTRIES

25 Whaley Avenue, PO Box 310, Milverton, ON CANADA N0K 1M0
Tel: 800-561-3164

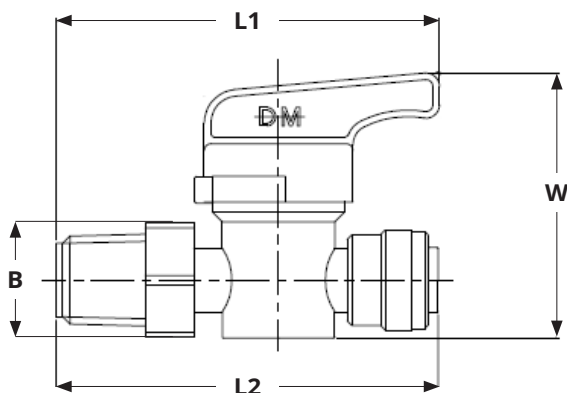
boshart.com ♦ blog.boshart.com

PQCSVS SERIES - TUBE O.D. STRAIGHT SUPPLY VALVE



DIMENSIONS							
Part No.	Size (Tube O.D. x Tube O.D.)	L1		L2		W	
		in	mm	in	mm	in	mm
PQCSVS-04	1/4"x1/4"	1.89	48.1	1.89	47.9	1.56	39.7
PQCSVS-06	3/8"x3/8"	2.30	58.5	2.29	58.4	1.81	46.0

PQCSVS-M SERIES - TUBE O.D. x MPT STRAIGHT SUPPLY VALVE



DIMENSIONS									
Part No.	Size (Tube O.D. x MPT)	L1		L2		W		B	
		in	mm	in	mm	in	mm	in	mm
PQCSVS-0404M	1/4"x1/4"	2.27	57.6	2.26	57.3	1.56	39.7	0.67	17.0

For more information on installation,
adjustment, repair & operation, visit
Boshart Knowledge Base at

SUPPORT.BOSHART.COM



BOSHART
INDUSTRIES

25 Whaley Avenue, PO Box 310, Milverton, ON CANADA N0K 1M0
Tel: 800-561-3164

boshart.com ♦ blog.boshart.com