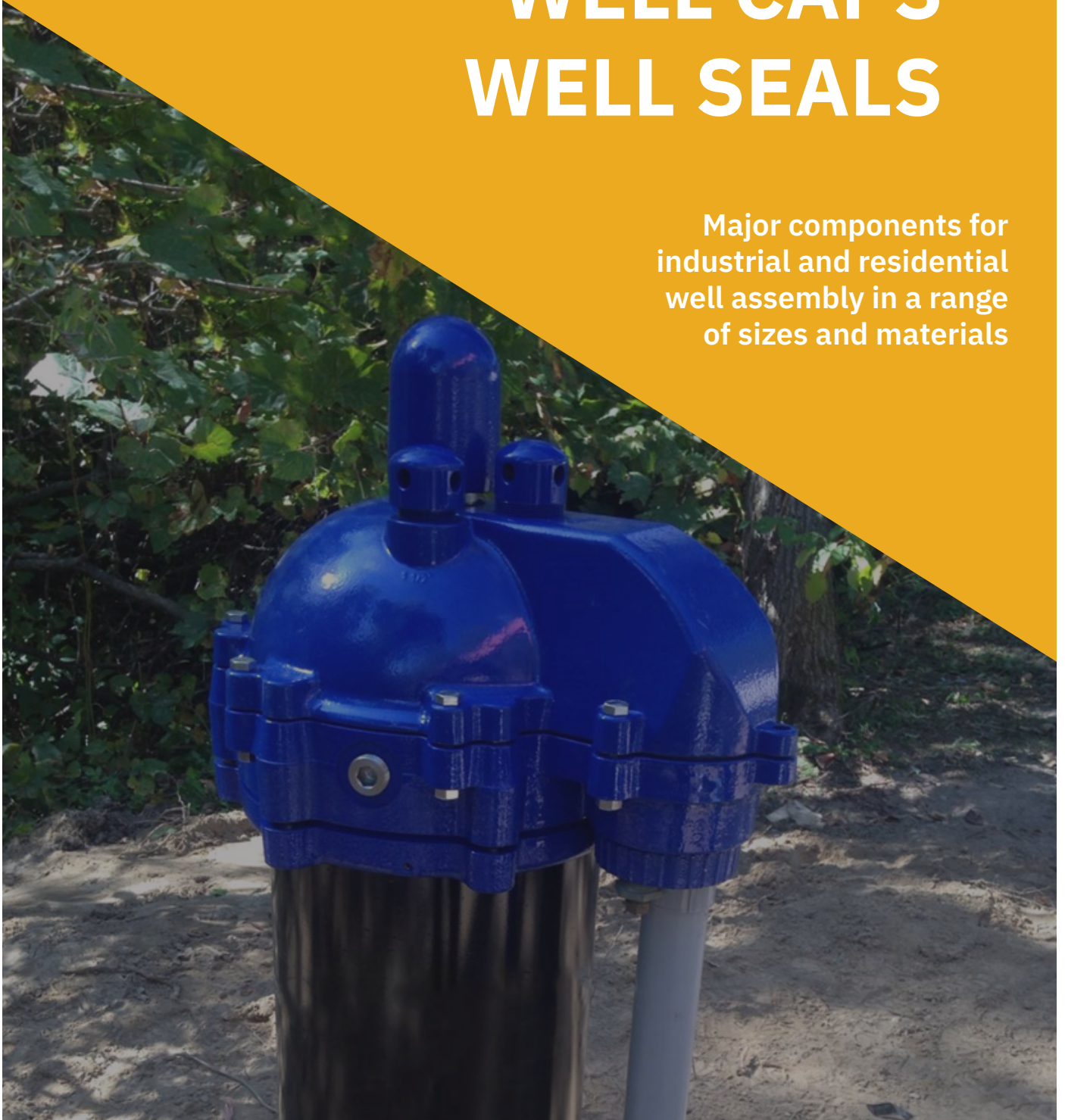


# PITLESS ADAPTERS WELL CAPS WELL SEALS

Major components for  
industrial and residential  
well assembly in a range  
of sizes and materials



**BOSHART**  
INDUSTRIES

**INDEX**

<b>Product Line</b>	<b>Page</b>
Standard Pitless Adapters	1
Pressurized Pitless Adapters	1
Tapped Pitless Adapters	2
Clamp On Pitless Adapters	2
Weld On Pitless Adapters	3
Wrap Around Pitless Adapters - PVC Casing	3
Clear Way Pitless Adapters - Steel Casing	3
Concrete Tile Pitless Adapters	3
Double Drop Pipe Pitless Adapters	4
Bronze Wire Spud	4
Pitless Adapter Accessories	4
Industrial Pitless Units	4
Plain Well Caps	6
Conduit Well Caps	6
WTC Series Watertight Well Caps	7
WTMLC Series Watertight Well Caps	8
WTCC Series Watertight Well Caps	9
WTCL Series Watertight Well Caps	9
WTCL Series Premium Watertight Well Cap	9
Premium Watertight Well Cap Accessories	10
Plastic Well Seals	11
Cast Iron Well Seals	12
Steel Well Seals	13
Well Seal Accessories	14

### STANDARD PITLESS ADAPTERS

Boshart's standard pitless adapters are designed to make raising a submersible pump for service or replacement easier. They feature gaskets for sealing on the casing.



Part No.	Size	Well Casing Size	Drop Pipe Size	Hole Saw Size	Maximum Load - Lbs	Quantity		List Price - A
						L1	L2	

List Price Effective: October 15, 2021



#### Bronze, Boshart

- NSF/ANSI 372 Certified
- Large gasket for more efficient sealing on casing

PA-800NL	1"	5" to 12"	1"	1-3/4"	900	16		\$ 136.15
----------	----	-----------	----	--------	-----	----	--	-----------



#### Bronze, Boshart

- NSF/ANSI 372 Certified
- Water Systems Council Listed PAS-97
- Large gasket for more efficient sealing on casing



PA-100NL	1"	5" to 12"	1"	1-3/4"	2000	16		\$ 157.91
PA-125NL	1-1/4"	5" to 12"	1-1/4"	2-1/8"	2000	10		\$ 233.80
PA-200NL	2"	5-5/8" to 12"	2"	3-1/8"	5000	4		\$ 592.58



#### Bronze, Sealwell

- NSF/ANSI 372 Certified
- Large gasket for more efficient sealing on casing

P-100NL	1"	5" to 12"	1"	1-3/4"	2000	16		\$ 158.81
---------	----	-----------	----	--------	------	----	--	-----------



#### Bronze, Dicken

- NSF/ANSI 372 Certified

JR-S-10NL	1"	4-1/2" to 12"	1"	1-3/4"	1500	12		\$ 182.18
LD-S-10NL	1"	5" to 12"	1"	1-3/4"	2000	12		\$ 281.76
LD-S-12NL	1-1/4"	5" to 12"	1-1/4"	2-1/8"	2000	8		\$ 445.49
S-20NL	2"	5-5/8" to 12"	2"	3-1/8"	5000	4		\$ 886.58



#### 304 Stainless Steel, Boshart

- NSF/ANSI 372 Certified
- Large gasket for more efficient sealing on casing

P-800-SS	1"	5" to 12"	1"	1-3/4"	6000	18		\$ 96.72
----------	----	-----------	----	--------	------	----	--	----------



#### 304 Stainless Steel, Boshart

- NSF/ANSI 372 Certified
- Water Systems Council Listed PAS-97
- Large gasket for more efficient sealing on casing



P-100-SS	1"	5" to 12"	1"	1-3/4"	6000	18		\$ 138.40
P-125-SS	1-1/4"	5" to 12"	1-1/4"	2-1/8"	6000	8		\$ 196.88
P-150-SS	1-1/2"	5" to 12"	1-1/2"	2-1/2"	6000	4		\$ 394.80
P-200-SS	2"	5" to 12"	2"	3-1/8"	6000	4		\$ 504.79

### PRESSURIZED PITLESS ADAPTERS

For installations requiring a pressurized point of attachment. A small hole between the internal and external gaskets ensures a positive pressure and seal to the well casing. Approved for use in the state of Illinois.

Part No.	Size	Well Casing Size	Drop Pipe Size	Hole Saw Size	Maximum Load - Lbs	Quantity		List Price - A
						L1	L2	

List Price Effective: October 15, 2021



#### Bronze, Boshart

- NSF/ANSI 372 Certified



PA-100-PNL	1"	5" to 12"	1"	1-3/4"	2000	16		\$ 228.56
PA-125-PNL	1-1/4"	5" to 12"	1-1/4"	2-1/8"	2000	10		\$ 334.25

Contact your sales rep for any further information

Toll Free: 1-800-561-3164

boshart.com

## TAPPED PITLESS ADAPTERS

Boshart's tapped pitless adapters are designed for underground tanks / dirty water to make service or replacement easier. They feature gaskets for sealing on the casing and a 1/4" FPT tapping.



Part No.	Primary Material	Well Casing Size	Drop Pipe Size	Hole Saw Size	Maximum Load - Lbs	Quantity L1 L2	List Price - A
List Price Effective: October 15, 2021							

### 1"

These tapped pitless adapters are for underground water well tank installations. The tapping provides a means to connect poly tubing to the pressure switch, located near the buried tank.

P-100-SS-T	304 Stainless Steel	5" to 12"	1"	1-3/4"	6000	16	\$ 208.26
PA-800-TNL	Bronze	5" to 12"	1"	1-3/4"	900	16	\$ 217.88

### 1-1/4"

These are for dirty water applications. The tapping provides a means to connect a 1/4" pipe to the pitless to allow for easy removal of the pitless unit and pump. The pipe is guided by a rail / guide system (not included) that aligns the pitless elbow with the pitless slide when reinstalling.

P-125-SS-T	304 Stainless Steel	5" to 12"	1-1/4"	2-1/8"	6000	8	\$ 230.14
PA-125-TNL	Bronze	5" to 12"	1-1/4"	2-1/8"	2000	10	\$ 334.25

### 2"

These are for dirty water applications. The tapping provides a means to connect a 1/4" pipe to the pitless to allow for easy removal of the pitless unit and pump. The pipe is guided by a rail / guide system (not included) that aligns the pitless elbow with the pitless slide when reinstalling.

P-200-SS-T	304 Stainless Steel	5" to 12"	2"	3-1/8"	6000	4	\$ 573.69
PA-200-TNL	Bronze	5-5/8" to 12"	2"	3-1/8"	5000	4	\$ 677.51

## CLAMP ON PITLESS ADAPTERS

Clamp on pitless adapters clamp around the well casing. They have a neoprene gasket for sealing the housing to the outside of the well casing and is held in place with stainless steel straps and hardware.



Part No.	Well Casing O.D.	Drop Pipe Size	Maximum Load - Lbs	Quantity L1 L2	List Price - A
List Price Effective: April 27, 2020					

### MAASS

09-4JC1NL	4-1/2"	1"	4000		\$ 377.08
09-5ODJC1NL	4.95" to 5"	1"	4000		\$ 387.37
09-5JC1NL	5-9/16"	1"	4000		\$ 387.37
09-6ODJC1NL	5.9" to 6"	1"	4000		\$ 408.34
09-6JC1NL	6-5/8"	1"	4000		\$ 408.56
09-7JC1NL	7"	1"	4000		\$ 569.45
09-4JC1.25NL	4-1/2"	1-1/4"	4000		\$ 462.49
09-5JC1.25NL	5-9/16"	1-1/4"	4000		\$ 484.24
09-5ODJC1.25NL	4.95" to 5"	1-1/4"	4000		\$ 484.24
09-6JC1.25NL	6-5/8"	1-1/4"	4000		\$ 489.72
09-6ODJC1.25NL	5.9" to 6"	1-1/4"	4000		\$ 489.72
09-7JC1.25NL	7"	1-1/4"	4000		\$ 614.28

Contact your sales rep for any further information

Toll Free: 1-800-561-3164  
boshart.com

### WELD ON PITLESS ADAPTERS

Weld on pitless adapters are designed for shallow or deep settings and high working pressures. They have a 8° slip fitting for easy installation and removal of the insert. No obstruction is left in the well casing when the insert is pulled out.



Part No.	Well Casing O.D.	Drop Pipe Size	Maximum Load - Lbs	Quantity		List
				L1	L2	Price - A
				List Price Effective: April 27, 2020		
MAASS						
09-4J1.25NL	4" to 5"	1-1/4"	5000			\$ 394.28
09-4J1.5NL	4" to 5"	1-1/2"	5000			\$ 523.63
09-6J1.5NL	6" or larger	1-1/2"	5000			\$ 523.63
09-5J2NL	5"	2"	6000			\$ 757.81
09-6J2NL	6" or larger	2"	5000			\$ 757.81
09-6J2.5NL	6" or larger	2-1/2"	8000			\$ 1,374.45
09-8J3NL	8" or larger	3"	10000			\$ 2,383.77
09-10J4NL	10" or larger	4"	16000			\$ 3,403.00

List Price Effective: April 27, 2020

### WRAP AROUND PITLESS ADAPTERS - PVC CASING

Wrap around pitless adapters come with a strap that wraps around a PVC well casing to secure it in place.



Part No.	Well Casing O.D.	Well Casing I.D.	Drop Pipe Size	Maximum Load - Lbs	Quantity		List Price - A
					L1	L2	
List Price Effective: April 27, 2020							
Dicken							
CW-4-10-WANL	4-1/2"	4"	1"	2000	6		\$ 405.44
CW-4-5-10-WANL	5"	4-1/2"	1"	2000	6		\$ 439.60
CW-5-10-WANL	5-9/16"	5"	1"	2000	6		\$ 447.29

List Price Effective: April 27, 2020

### CLEAR WAY PITLESS ADAPTERS - STEEL CASING

Clear way pitless adapters come with a strap that wraps around a steel well casing to secure it in place.



Part No.	Well Casing O.D.	Well Casing I.D.	Drop Pipe Size	Maximum Load - Lbs	Quantity		List Price - A
					L1	L2	
List Price Effective: April 27, 2020							
Dicken							
CW-4-10NL	4-1/2"	4"	1"	2000	6		\$ 356.33
CW-5-10NL	5" or 5-9/16"	4-1/2" or 5"	1"	2000	6		\$ 367.23
CW-6-10NL	6" or 6-5/8"	5-5/8" or 6"	1"	2000	6		\$ 429.20

List Price Effective: April 27, 2020

### CONCRETE TILE PITLESS ADAPTERS

Concrete tile pitless adapters have an extended shank to allow the pitless slide to be installed through a cement casing with a maximum thickness of 3". The 1-1/4" adapter is ideal for sewage disconnects on grinder pumps in cement tanks.



Part No.	Size	Drop Pipe Size	Hole Saw Size	Maximum Load	Quantity		List
				- Lbs	L1	L2	Price - A
				List Price Effective: October 15, 2021			
Bronze, Boshart							
PA-100-CTNL	1"	1"	1-3/4"	2000	12		\$ 205.25
PA-125-CTNL	1-1/4"	1-1/4"	2-1/8"	2000	10		\$ 374.17

List Price Effective: October 15, 2021

Contact your sales rep for any further information


Toll Free: 1-800-561-3164  
boshart.com



## DOUBLE DROP PIPE PITLESS ADAPTERS

Double drop pipe pitless adapters allow for two pipes to go down the well, generally used in jet pump applications.



Part No.	Well Casing Size	Drop Pipe Size	Hole Saw Size	Maximum Load - Lbs	Quantity		List Price - A
					L1	L2	
List Price Effective: October 15, 2021							
<b>Dicken</b>							
LD-2XNL	4-1/2" to 12"	1" & 1-1/4"	1-3/4" & 2-1/8"	2000	6		\$ 697.51
<b>Boshart</b>							
• Water System Council Listed PAS-97							
							
PA-2XNL	4-1/2" to 12"	1" & 1-1/4"	1-3/4" & 2-1/8"	2000	6		\$ 475.92



## BRONZE WIRE SPUD

Boshart's wire spud are attached to a well casing, for many reasons including bulkhead fittings, electrical conduit and well drain. The rubber gasket prevents any ground water contamination. Provide long life and durability in aggressive well conditions.



Part No.	Size	Quantity		List Price - A
		L1	L2	
WS-100	1"	16		\$ 79.46

## PITLESS ADAPTER ACCESSORIES

These accessories are for pitless adapters.



### Hole Saw

The high speed cutting edge is electron-beam welded to a tough alloy back. These hole saws cut clean and accurately through virtually any machinable material. Knockout holes allow for easy removal of the cores. Contact inside sales for additional sizes.

28-HS134	1-3/4"	Use to install 1" pitless adapters		\$ 39.70
28-HS212	2-1/2"	Use to install 1-1/2" pitless adapters		\$ 51.35
28-HS218	2-1/8"	Use to install 1-1/4" pitless adapters		\$ 49.41
28-HS318	3-1/8"	Use to install 2" pitless adapters		\$ 54.36



### Pilot Drill

Replacement pilot drill for arbor and hole saws.

28-HSPD	1/4"		10	\$ 12.80
---------	------	--	----	----------



### Quick Change Arbor

This quick change arbor provides fast interchanging of hole saws without arbor removal from chuck. The hex shank prevents slippage in chuck. For hole saws 1-1/4" to 6" in diameter.

28-HSA	7/16"	Hex Shank		\$ 53.21
--------	-------	-----------	--	----------



### Silicone Lubricant

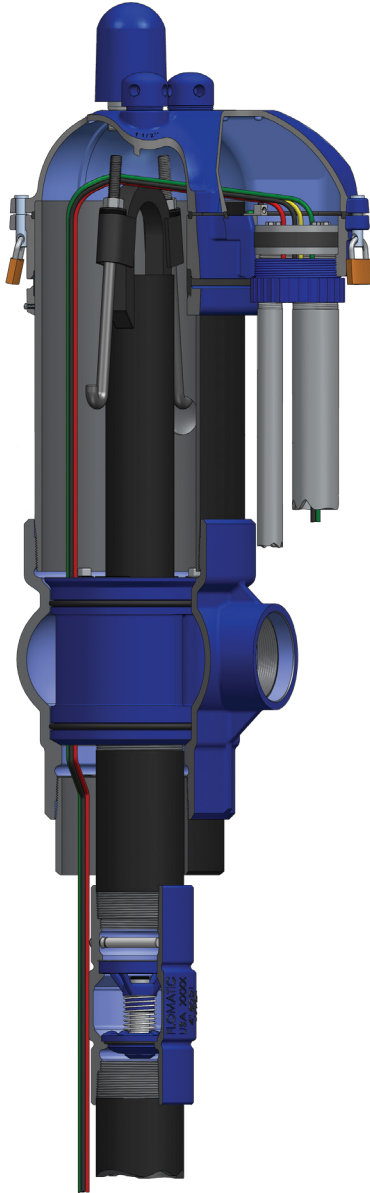
This silicone lubricant retains it's paste like consistency and will not soften or flow over the temperature range listed. It is highly water repellent and resistant to oxidation. Provides a mild chemical barrier coating.

P-LUBE	4 oz.		100	\$ 29.41
--------	-------	--	-----	----------

Contact your sales rep for any further information

Toll Free: 1-800-561-3164  
boshart.com

### INDUSTRIAL PITLESS UNITS



Boshart's Industrial Pitless Units are designed and precision-machined for heavy duty municipal and industrial water well applications.

Benefits include:

- Quick Installation
- Easy to Service
- Economical
- Sanitary
- Frost Proof
- Durable
- Maximum Corrosion Protection
- Readily Available
- Certified to Industry Standards
  - NSF/ANSI/CAN Standard 61 Certified
  - NSF/ANSI Standard 372 Certified
  - ASSE Standard #1093-2019, Water System Council Standard PAS-97



Please contact inside sales for more information on our industrial pitless units and accessories. Full details are available in our Booklet, and request forms available upon request.

#### Part Number Convention:

P 08 D W B 6 F 4 F 4 N C

P	08	D	W	B	6	F	4	F	4	N	C	Well Cap: C = Cast Iron, N = No Cap,
												Well / Spool Type: N = Normal Well (Open Through Passages) F = Flowing Well (Closed Spool with Tappings for Cable Seals).
												Discharge Connection Size.
												Discharge Connection Type (FPT).
												Drop Pipe Connection Size.
												Drop Pipe Connection Type (FPT).
												Bury Depth (feet) 3', 4', 5', 6', 7', 8', 9', 10'
												Upper Barrel Type: "B" = (Black Painted Steel) Standard/ Schedule 40 0.28" wall "I" = (Black Painted Steel) with Isolation Flange "S" = (304 Stainless Steel) Schedule 40 0.25" wall "H" = (304 Stainless Steel) Standard / Schedule 40 0.28" wall "P" = (PVC) Schedule 40 0.28" wall <b>All are supplied with Hold-Down Hook / Torque Arrestor Assemblies</b>
												Well Casing Connection = W (Weld Nipple) as standard option.
												Material: D (Ductile Iron) or S (Stainless Steel).
												Well Casing Size. 5', 6', 7', 8', 10' and 12'
												Pitless Unit (Spool Type).

Contact your sales rep for any further information

Toll Free: 1-800-561-3164  
boshart.com

### PLAIN WELL CAPS

These heavy duty plain well caps use stainless steel screws for securing the cap to the well casing. A well log is provided inside each cap to record installation data and specifications.



Part No.	Well Casing O.D.	Well Casing I.D.	Quantity		List
			L1	L2	Price - A

List Price Effective: October 15, 2021



#### Aluminum, Boshart

• 3 set screws for securing

WCP-A06	6-5/8"	6"	24		\$ 28.92
---------	--------	----	----	--	----------



#### Aluminum, Dicken

• 1 set screw for securing

PC-4	4-1/2"	4"	36		\$ 41.20
PC-566	6" or 6-5/8"	5-5/8" or 6"	21		\$ 82.26
PC-66	7"	6-5/8"	21		\$ 87.61

### CONDUIT WELL CAPS

Boshart's conduit well caps are designed to provide extra clearance for pump cable. They have three stainless steel set screws for securing the cap to the well casing and one stainless steel screw to secure the conduit pipe. A well log is provided inside each cap to record installation data and specifications.



Part No.	Well Casing O.D.	Well Casing I.D.	Conduit Connection	Quantity		List
				L1	L2	Price - A

List Price Effective: October 15, 2021



#### Aluminum, Standard Boshart

WCC-A04	4-1/2"	4"	1" FPT	36		\$ 23.82
WCC-A045	5"	4-1/2"	1" FPT	30		\$ 28.13
WCC-A05	5-9/16"	5"	1" FPT	30		\$ 29.61
WCC-A056	6"	5-5/8"	1" FPT	30		\$ 33.96
WCC-A06	6-5/8"	6"	1" FPT	20		\$ 32.30
WCC-A066	7"	6-5/8"	1" FPT	20		\$ 35.50
WCC-A08	8-5/8"	8"	1" FPT	16		\$ 65.89
WCC-A10	10-3/4"	10"	1" FPT	10		\$ 126.50



#### Aluminum, Locking Boshart

• Lock not included

WCCL-A06	6-5/8"	6"	1" FPT	20		\$ 31.45
----------	--------	----	--------	----	--	----------



#### Cast Iron, Powder Coat Painted Boshart

CC-6-CI	6-5/8"	6" or 6-1/4"	1" FPT	12		\$ 48.96
---------	--------	--------------	--------	----	--	----------

Contact your sales rep for any further information

Toll Free: 1-800-561-3164  
boshart.com



### WTC SERIES WATERTIGHT WELL CAPS

Boshart's watertight well caps are easy to install and provide easy access for maintenance. They feature large screened air vents making them vermin proof. The design offers greater clearance for submersible pump cable and each well cap has a grounding terminal with a bolt. Two O-rings ensure a reliable watertight seal both between the well casing & retainer ring as well as between the seal cover & retainer ring. Stainless steel hardware is used for maximum corrosion resistance. A well log is provided inside each cap to record installation data and specifications. Each well cap has a grounding terminal with a bolt.



• Water System Council Listed PAS-97

Part No.	Well Casing O.D.	Well Casing I.D.	Conduit Connection	Air Vent	Quantity		List Price - A
					L1	L2	

List Price Effective: October 15, 2021

#### For Steel or PVC Well Casings Aluminum, Standard



WTC-A04	4-1/2"	4"	1" FPT	(2) 3/4"	16		\$ 67.84
WTC-A05	5-9/16"	5"	1" FPT	(2) 3/4"	12		\$ 73.74
WTC-A06	6-5/8"	6"	1" FPT	(2) 3/4"	12		\$ 73.07
WTC-A06-12	6-5/8"	6"	1-1/4" FPT	(2) 3/4"	12		\$ 75.27

#### For Steel or PVC Well Casings Aluminum, Powder Coat Painted



WTC-A06-12-BLUE	6-5/8"	6"	1-1/4" FPT	(2) 3/4"	12		\$ 87.74
WTC-A06-BLUE	6-5/8"	6"	1" FPT	(2) 3/4"	12		\$ 85.16

#### For Steel or PVC Well Casings Cast Iron, Powder Coat Painted



WTC-C06	6-5/8"	6"	1" FPT	(2) 3/4"	6		\$ 107.02
WTC-C06-12	6-5/8"	6"	1-1/4" FPT	(2) 3/4"	6		\$ 110.15

#### For Steel or PVC Well Casings PVC & Aluminum, Standard



WTC-PA06	6-5/8"	6"	1" FPT	(2) 3/4"	1	12	\$ 69.82
----------	--------	----	--------	----------	---	----	----------

#### For PVC Well Casings ABS, Glue-on



• WTC-G-P0625-06 includes a casing adapter that can be glued onto the well casing for flexibility where casing sizes may vary.

WTC-G-P0625	6.9"	6-1/4"	1" FPT	(2) 3/4"	12		\$ 50.20
WTC-G-P0625-06	6-5/8" or 6.9"	6" or 6-1/4"	1" FPT	(2) 3/4"	1	12	\$ 55.44

#### For PVC Well Casings Aluminum & ABS, Glue-on



• WTC-G-AP0625-06 includes a casing adapter that can be glued onto the well casing for flexibility where casing sizes may vary.

WTC-G-AP0625	6.9"	6-1/4"	1" FPT	(2) 3/4"	12		\$ 59.92
WTC-G-AP0625-06	6-5/8" or 6.9"	6" or 6-1/4"	1" FPT	(2) 3/4"	1	12	\$ 65.21

Contact your sales rep for any further information

Toll Free: 1-800-561-3164  
boshart.com

## WTMLC SERIES WATERTIGHT WELL CAPS

Boshart's watertight miracle locking well caps are easy to install and provide easy access for maintenance. They feature large screened air vents making them vermin proof. The design offers greater clearance for submersible pump cable and each well cap has a grounding terminal with a bolt. Two O-rings ensure a reliable watertight seal both between the well casing & retainer ring as well as between the seal cover & retainer ring. Stainless steel hardware is used for maximum corrosion resistance. A well log is provided inside each cap to record installation data and specifications.

The locking feature provides a secure & tamper-proof installation. Lock not included.

• Water System Council Listed PAS-97



Part No.	Well Casing O.D.	Well Casing I.D.	Conduit Connection	Air Vent	Quantity		List Price - A
					L1	L2	

List Price Effective: October 15, 2021

### For Steel or PVC Well Casings Aluminum, Locking



WTMLC-A04	4-1/2"	4"	1" FPT	(2) 3/4"	20		\$ 74.21
WTMLC-A045	5"	4-1/2"	1" FPT	(2) 3/4"	16		\$ 80.58
WTMLC-A05	5-9/16"	5"	1" FPT	(2) 3/4"	16		\$ 81.74
WTMLC-A06	6-5/8"	6"	1" FPT	(2) 3/4"	12		\$ 86.00
WTMLC-A06-12	6-5/8"	6"	1-1/4" FPT	(2) 3/4"	12		\$ 87.59
WTMLC-A066	7"	6-5/8"	1" FPT	(2) 3/4"	12		\$ 106.57

### For Steel or PVC Well Casings Aluminum, Locking - Powder Coat Paint



WTMLC-A045-BLUE	5"	4-1/2"	1" FPT	(2) 3/4"	16		\$ 92.72
WTMLC-A056-BLUE	6"	5-5/8"	1" FPT	(2) 3/4"	16		\$ 97.89
WTMLC-A05-BLUE	5-9/16"	5"	1" FPT	(2) 3/4"	16		\$ 94.00
WTMLC-A06-BLUE	6-5/8"	6"	1" FPT	(2) 3/4"	12		\$ 99.94

## WELL CAP CASING ADAPTER

This well cap casing adapter is glued onto a 6-5/8" PVC well casing to allow the use of a 6.9" well cap.

Primary Material: PVC



Part No.	Size	Quantity		List Price - A
		L1	L2	

List Price Effective: November 02, 2009



WCCA-G0625-G06	6.9" x 6-5/8"	12		\$ 2.89
----------------	---------------	----	--	---------

Contact your sales rep for any further information

Toll Free: 1-800-561-3164  
boshart.com

### WTCC SERIES WATERTIGHT WELL CAPS

Boshart's watertight well caps have a wide gasket that provides a positive compression seal between the well casing and cap as well as the cap cover and retainer ring. This well cap is designed with a deep pocket for sealing unevenly cut casings as the gasket will seal as far as 1-1/2" from the top of the casing. Compression is achieved by tightening five bolts. They feature two large screened air vents making them vermin proof. This design offers increased clearance for submersible pump cable. Locking feature provides a secure/ tamper proof installation. Lock not included.

• Water System Council Listed PAS-97



Part No.	Well Casing O.D.	Well Casing I.D.	Conduit Connection	Air Vent	Quantity		List Price - A
					L1	L2	

List Price Effective: October 15, 2021

#### For Steel or PVC Well Casings Cast Iron, Locking - Powder Coat Paint

WTCC-66-CI	7"	6-5/8"	1-1/4" FPT	(2) 3/4"	6		\$ 131.24
WTCC-6-CI	6-5/8"	6" or 6-1/4"	1" FPT	(2) 3/4"	6		\$ 111.29
WTCC-6-CI-12	6-5/8"	6" or 6-1/4"	1-1/4" FPT	(2) 3/4"	6		\$ 122.94

### WTCL SERIES WATERTIGHT WELL CAPS

Boshart's watertight well caps are easy to install and easy to access for maintenance. They feature large screened air vents making them vermin proof. This design offers greater clearance for submersible pump cable and the O-ring system ensures a reliable watertight seal. Stainless steel hardware ensures maximum corrosion resistance.



Part No.	Well Casing O.D.	Well Casing I.D.	Conduit Connection	Air Vent	Quantity		List Price - A
					L1	L2	

List Price Effective: October 15, 2021

#### For Steel or PVC Well Casings Aluminum, Locking

WTCL-A08	8-5/8"	8"	1-1/4" FPT	(2) 3/4"	8		\$ 165.75
WTCL-A10	10-3/4"	10"	1-1/4" FPT	(2) 3/4"	5		\$ 394.20
WTCL-A12	12-3/4"	12"	1-1/4" FPT	(2) 3/4"	5		\$ 490.28



### WTCL SERIES PREMIUM WATERTIGHT WELL CAP

Boshart's premium watertight well cap installs fast & simply allowing for easy access to the well for maintenance. The three piece design allows the cover to be removed without disturbing the seal to the well casing, or interfering with the wiring / conduit. A blue powder coat paint is baked on to ensure superior quality.

It features a thick, heavy duty SBR gasket and a deep socket to ensure the watertight seal is down from the top of the well casing. All hardware is stainless steel for maximum corrosion resistance. This cap is supplied with a grounding terminal and the metal cap is bonded to the steel casing with set screws.

A 2" mushroom venting cap with a steel mesh makes them vermin proof and a locking feature provides a secure/ tamper proof design. Lock is not included. Cap can be personalized by means of an engraved aluminum plate which is affixed by drive rivets.

• Water Systems Council Listed PAS-97



Part No.	Well Casing O.D.	Well Casing I.D.	Conduit Connection	Air Vent	Quantity		List Price - A
					L1	L2	

List Price Effective: October 15, 2021

#### For Steel or PVC Well Casings Cast Iron

WTCL-C08	8-5/8"	8"	2" FPT	(1) 2" MVC			\$ 1,417.91
----------	--------	----	--------	------------	--	--	-------------



Contact your sales rep for any further information

Toll Free: 1-800-561-3164  
boshart.com

## WTCL SERIES PREMIUM WATERTIGHT WELL CAPS

Boshart's premium watertight well caps provide easy access to the well without interfering with the seal to the casing or conduit wiring. These caps have a three piece design and have a blue powder coat paint that is baked on to ensure superior quality. They feature thick, heavy duty SBR gaskets and all stainless steel hardware for maximum corrosion resistance.

The caps are supplied with a grounding terminal and the metal cap is bonded to the steel casing with set screws. Venting cap has a steel mesh to ensure they are vermin proof and two accessory ports for field installation of accessories. A locking feature provides a secure / tamper proof design.

Stop tabs allow for easy and accurate positioning of the lower assembly.

• Water Systems Council Listed PAS-97



Part No.	Well Casing O.D.	Well Casing I.D.	Conduit Connection	Quantity		List Price - A
				L1	L2	

List Price Effective: October 15, 2021

### For Steel or PVC Well Casings

#### Cast Iron

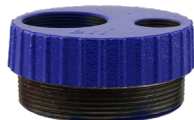
WTCL-C10	10-3/4"	10"	4" FPT			\$ 3,301.83
WTCL-C12	12-3/4"	12"	4" FPT			\$ 3,800.02
WTCL-C14	14"	13.18"	4" FPT			\$ 4,076.30

## PREMIUM WATERTIGHT WELL CAP ACCESSORIES

These accessories are for the premium watertight cast iron well caps. For more information please contact inside sales.

Part No.	Description	Quantity		List Price - A
		L1	L2	

List Price Effective: October 15, 2021



### Conduit Adapter

#### Cast Iron,

These adapters convert the 4" FPT conduit connection to (1) 2" FPT and (1) 1" FPT conduit connections allowing for the separation of power cables and other sensor wiring. They are coated with a durable blue powder coat paint.

WTCL-CA40-2010		12		\$ 183.78
----------------	--	----	--	-----------



### Cable Seal Assembly

#### Stainless Steel,

These cable seal assemblies provide a watertight / vermin proof barrier between the conduit piping and the well chamber of the well cap. The plates and hardware are stainless steel for maximum corrosion resistance. Outside diameter is 4" and the gasket material is SBR rubber.

WTCL-CS40-312-4	Cable Range: 0.14" to 0.311"			\$ 507.11
WTCL-CS40-437-4	Cable Range: 0.312" to 0.437"			\$ 869.12
WTCL-CS40-563-4	Cable Range: 0.437" to 0.563"			\$ 667.30
WTCL-CS40-700-4	Cable Range: 0.563" to 0.7"			\$ 873.53



### Vent Cap

#### Cast Iron,

Vent caps are for the premium watertight well caps and feature a 60 mesh stainless steel screen. They have a 2" MPT thread and come with a cotter key to lock the vent in place. A blue powder coat paint is applied for durability.

WTCL-VC-08	For 8" Well Cap			\$ 39.37
WTCL-VC-1014	For 10", 12" or 14" Well Caps			\$ 86.46

### Locking Pin

#### 304 Stainless Steel,

This locking pin is for accessory ports on the 10", 12" or 14" WTCL-C series well caps. A 5/16" hole through the pin is for a lock.

WTCL-CLP		100		\$ 23.67
----------	--	-----	--	----------



### Depth Tester Kit

Depth tester kits are for measuring the level of water that is in the well.

WCDTK				\$ 335.07
-------	--	--	--	-----------



### Water Sampling Valve Kit

Water sampling valves provide a means to acquire a water sample at the well head. This water sampling valve kit has a non-freeze design which allows for sampling in all seasons. The kit comes complete with a valve, lockable cap and union connection for quick and easy installation.

WSVK05-12				\$ 802.14
-----------	--	--	--	-----------



Contact your sales rep for any further information

Toll Free: 1-800-561-3164  
boshart.com

### PLASTIC WELL SEALS

Plastic well seals allow for larger conduit cables. Grommet kits include both a round and slotted gasket for twisted or flat jacketed pump cables.

Options for a split well seal (add S at end of part number) or stainless steel hardware (add -SH at end of part number) are available, contact inside sales for more information.



Part No.	Grommet Kit Included	Well Casing I.D.	Conduit Connection	Vent Size	Drop Pipe Size	Quantity		List Price - A
						L1	L2	

List Price Effective: July 16, 2021

#### Blank

- Supplied with a plug for the conduit connection



WSP40	Yes	4"	3/4" FPT	1/2"		1	16	\$ 26.82
WSP42	Yes	4-1/4"	3/4" FPT	1/2"		1	16	\$ 27.39
WSP50	Yes	5"	1" FPT	1/2"		1	8	\$ 33.97
WSP52	Yes	5-1/4"	1" FPT	1/2"		1	8	\$ 34.84
WSP60	Yes	6"	1" FPT	1/2"		1	8	\$ 38.13
WSP62	Yes	6-1/4"	1" FPT	1/2"		1	8	\$ 38.71

#### Single Hole



WSP4010	Yes	4"	3/4" FPT	1/2"	1"	1	16	\$ 26.71
WSP4012	Yes	4"	3/4" FPT	1/2"	1-1/4"	1	16	\$ 26.49
WSP4015	Yes	4"	3/4" FPT	1/2"	1-1/2"	1	16	\$ 26.47
WSP4210	Yes	4-1/4"	3/4" FPT	1/2"	1"	1	16	\$ 27.29
WSP4212	Yes	4-1/4"	3/4" FPT	1/2"	1-1/4"	1	16	\$ 27.09
WSP4215	Yes	4-1/4"	3/4" FPT	1/2"	1-1/2"	1	16	\$ 27.05
WSP4220	Yes	4-1/4"	3/4" FPT	1/2"	2"	1	16	\$ 25.22
WSP5010	Yes	5"	1" FPT	1/2"	1"	1	8	\$ 33.62
WSP5012	Yes	5"	1" FPT	1/2"	1-1/4"	1	8	\$ 33.76
WSP5015	Yes	5"	1" FPT	1/2"	1-1/2"	1	8	\$ 33.65
WSP5020	Yes	5"	1" FPT	1/2"	2"	1	8	\$ 33.33
WSP5210	Yes	5-1/4"	1" FPT	1/2"	1"	1	8	\$ 34.48
WSP6010	Yes	6"	1" FPT	1/2"	1"	1	8	\$ 38.06
WSP6012	Yes	6"	1" FPT	1/2"	1-1/4"	1	8	\$ 37.99
WSP6015	Yes	6"	1" FPT	1/2"	1-1/2"	1	8	\$ 37.83
WSP6020	Yes	6"	1" FPT	1/2"	2"	1	8	\$ 37.42
WSP6210	Yes	6-1/4"	1" FPT	1/2"	1"	1	8	\$ 38.62
WSP6212	Yes	6-1/4"	1" FPT	1/2"	1-1/4"	1	8	\$ 38.56
WSP6215	Yes	6-1/4"	1" FPT	1/2"	1-1/2"	1	8	\$ 38.41
WSP6220	Yes	6-1/4"	1" FPT	1/2"	2"	1	8	\$ 38.00

#### Raised Supports, Single Hole

- This well seal has raised supports which the drop pipe fitting rests on, this keeps the fittings above the nuts and conduit bushing making it possible to incorporate a 3/4" cable hole.



WSP4020	Yes	4"	3/4" FPT	1/2"	2"	1	16	\$ 24.69
---------	-----	----	----------	------	----	---	----	----------

#### Double Hole



WSP401210	Yes	4"		1/2"	1-1/4" x 1"	1	16	\$ 24.50
WSP421210	Yes	4-1/4"		1/2"	1-1/4" x 1"	1	16	\$ 25.06
WSP501210	Yes	5"		1/2"	1-1/4" x 1"	1	8	\$ 31.74
WSP601210	Yes	6"		1/2"	1-1/4" x 1"	1	8	\$ 35.84
WSP601212	Yes	6"		1/2"	1-1/4"	1	8	\$ 35.68
WSP621210	Yes	6-1/4"		1/2"	1-1/4" x 1"	1	8	\$ 36.41
WSP621212	Yes	6-1/4"		1/2"	1-1/4"	1	8	\$ 36.27

Contact your sales rep for any further information

Toll Free: 1-800-561-3164  
boshart.com

## CAST IRON WELL SEALS

Boshart's cast iron well seals allow for larger conduit cables. Well seal modifications are available, contact inside sales for more information.

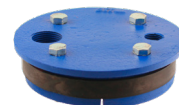


Part No.	Grommet Kit Included	Well Casing I.D.	Conduit Connection	Vent Size	Drop Pipe Size	Quantity		List Price - A
						L1	L2	

List Price Effective: October 15, 2021

### Blank

- WS50 seal is not a solid plate



WS40	No	4"						\$ 106.19
WS50	Yes	5"	1" FPT	1/2"		6		\$ 111.82
WS60	Yes	6"	1" FPT	1/2"				\$ 127.96
WS62	Yes	6-1/4"	1" FPT	1/2"		6		\$ 127.96

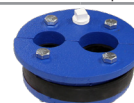
### Single Hole

- WS6030 has a solid plate



WS3010	Yes	3"	3/8" FPT	1/8"	1"	6		\$ 91.52
WS3012	Yes	3"	3/8" FPT	3/8"	1-1/4"			\$ 91.52
WS4010	Yes	4"	3/4" FPT	1/2"	1"	6		\$ 56.52
WS4012	Yes	4"	3/4" FPT	1/2"	1-1/4"	6		\$ 56.52
WS4015	Yes	4"	3/4" FPT	1/2"	1-1/2"	6		\$ 77.71
WS4020	Yes	4"	3/4" FPT	1/2"	2"	6		\$ 77.71
WS4210	Yes	4-1/4"	3/4" FPT	1/2"	1"	6		\$ 75.81
WS4212	Yes	4-1/4"	3/4" FPT	1/4"	1-1/4"	16		\$ 75.81
WS4510	Yes	4-1/2"	1/2" FPT	1/2"	1"	1	6	\$ 76.92
WS4512	Yes	4-1/2"	1/2" FPT	1/2"	1-1/4"	1	6	\$ 74.86
WS5010	Yes	5"	1" FPT	1/2"	1"	6		\$ 114.59
WS5012	Yes	5"	1" FPT	1/2"	1-1/4"	6		\$ 116.10
WS5015	Yes	5"	1" FPT	1/2"	1-1/2"	1	6	\$ 78.98
WS5020	Yes	5"	1" FPT	1/2"	2"	6		\$ 116.10
WS5510	Yes	5-5/8"	3/4" FPT	1/2"	1"	1		\$ 131.78
WS5512	Yes	5-5/8"	3/4" FPT	1/2"	1-1/4"			\$ 149.33
WS6010	Yes	6"	1" FPT	1/2"	1"	6		\$ 92.11
WS6012	Yes	6"	1" FPT	1/2"	1-1/4"	6		\$ 101.97
WS6015	Yes	6"	1" FPT	1/2"	1-1/2"	6		\$ 134.16
WS6020	Yes	6"	1" FPT	1/2"	2"	6		\$ 134.16
WS6030	Yes	6"	1" FPT	1/2"	3"	6		\$ 156.89
WS6210	Yes	6-1/4"	1" FPT	1/2"	1"	6		\$ 92.11
WS6212	Yes	6-1/4"	1" FPT	1/2"	1-1/4"	6		\$ 101.97
WS6215	Yes	6-1/4"	1" FPT	1/2"	1-1/2"			\$ 230.00
WS6220	Yes	6-1/4"	1" FPT	1/2"	2"	8		\$ 134.16

### Double Hole



WS301007	No	3"		1/4"	1" x 3/4"			\$ 89.79
WS401210	No	4"		1/2"	1-1/4" x 1"	6		\$ 63.04
WS401212	No	4"		1/2"	1-1/4"			\$ 84.56
WS421210	No	4-1/4"		1/2"	1-1/4" x 1"	6		\$ 74.67
WS451210	No	4-1/2"		1/2"	1-1/4" x 1"			\$ 670.92
WS501210	No	5"		1/2"	1-1/4" x 1"	6		\$ 114.00
WS551210	No	5-5/8"		1/2"	1-1/4" x 1"	1	6	\$ 104.91
WS601210	No	6"		1/2"	1-1/4" x 1"	6		\$ 104.83
WS601212	No	6"		1/2"	1-1/4"			\$ 128.16
WS621210	No	6-1/4"		1/2"	1-1/4" x 1"	6		\$ 104.83
WS621212	No	6-1/4"		1/2"	1-1/4"	6		\$ 128.16

### Clamp Over



WS2010	No	2"			1"			\$ 117.77
WS2012	Yes	2"			1-1/4"			\$ 111.11

Contact your sales rep for any further information

Toll Free: 1-800-561-3164  
boshart.com



### STEEL WELL SEALS

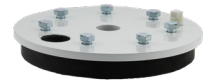
Boshart's steel well seals are solid and made from hot rolled steel. They are powder coated for a durable finish and have an extra thick rubber gland for positive sealing. These seals have large pump cable / wire holes for easy installation. Eye bolt option is available by adding -EB to the end of the part number. Contact inside sales for more information.



Part No.	Grommet Kit Included	Well Casing I.D.	Conduit Connection	Vent Size	Drop Pipe Size	Maximum Load - Lbs	Quantity L1 L2	List Price - A
----------	----------------------	------------------	--------------------	-----------	----------------	--------------------	----------------	----------------

List Price Effective: October 15, 2021

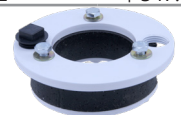
#### Single Hole



WSS3510	No	3-1/2"	1/2" FPT	1/2"	1"		16	\$ 110.68
WSS4010	No	4" to 4-1/4"	3/4" FPT	1/2"	1"	2100	12	\$ 57.72
WSS4012	No	4" to 4-1/4"	3/4" FPT	1/2"	1-1/4"	2100	12	\$ 69.40
WSS4015	No	4" to 4-1/4"	3/4" FPT	1/2"	1-1/2"	2100	12	\$ 69.40
WSS4510	No	4-1/4" to 4-1/2"	3/4" FPT	1/2"	1"	2100	6	\$ 147.29
WSS4512	No	4-1/4" to 4-1/2"	3/4" FPT	1/2"	1-1/4"	2100	6	\$ 147.29
WSS4515	No	4-1/4" to 4-1/2"	3/4" FPT	1/2"	1-1/2"	2100	6	\$ 147.29
WSS4520	No	4-1/4" to 4-1/2"	1/2" FPT	1/2"	2"	2100	6	\$ 178.84
WSS5010	No	5" to 5-1/4"	1" FPT	1/2"	1"	1500	12	\$ 66.46
WSS5012	No	5" to 5-1/4"	1" FPT	1/2"	1-1/4"	1500	12	\$ 66.46
WSS5015	No	5" to 5-1/4"	1" FPT	1/2"	1-1/2"	1500	12	\$ 66.46
WSS5020	No	5" to 5-1/4"	1" FPT	1/2"	2"	1500	12	\$ 66.46
WSS6010	No	6" to 6-1/4"	1" FPT	1/2"	1"	1100	8	\$ 83.66
WSS6012	No	6" to 6-1/4"	1" FPT	1/2"	1-1/4"	1100	8	\$ 83.66
WSS6015	No	6" to 6-1/4"	1" FPT	1/2"	1-1/2"	1100	8	\$ 83.66
WSS6020	No	6" to 6-1/4"	1" FPT	1/2"	2"	1100	8	\$ 83.66
WSS6210	No	6-1/4"	1" FPT	1/2"	1"	1100	8	\$ 83.66
WSS6212	No	6-1/4"	1" FPT	1/2"	1-1/4"	1100	8	\$ 83.66
WSS6215	No	6-1/4"	1" FPT	1/2"	1-1/2"	1100	8	\$ 83.66
WSS6220	No	6-1/4"	1" FPT	1/2"	2"	1100	8	\$ 83.66
WSS7010	No	7"	1-1/4" FPT	1/2"	1"	2000	6	\$ 172.96
WSS7012	No	7"	1-1/4" FPT	1/2"	1-1/4"	2000	6	\$ 172.81
WSS7015	No	7"	1-1/4" FPT	1/2"	1-1/2"	9000	6	\$ 172.81
WSS7020	No	7"	1-1/4" FPT	1/2"	2"	9000	6	\$ 172.49
WSS7030	No	7"	1-1/4" FPT	1/2"	3"	9000	6	\$ 174.25
WSS8010	No	8" to 8-1/4"	1-1/4" FPT	1/2"	1"	6900	4	\$ 171.55
WSS8012	No	8" to 8-1/4"	1-1/4" FPT	1/2"	1-1/4"	6900	4	\$ 171.55
WSS8015	No	8" to 8-1/4"	1-1/4" FPT	1/2"	1-1/2"	6900	4	\$ 171.45
WSS8020	No	8" to 8-1/4"	1-1/4" FPT	1/2"	2"	6900	4	\$ 171.29
WSS8025	No	8" to 8-1/4"	1-1/4" FPT	1/2"	2-1/2"	6900	4	\$ 209.67
WSS8030	No	8" to 8-1/4"	1-1/4" FPT	1/2"	3"	12000	4	\$ 256.39
WSS8040	No	8" to 8-1/4"	1-1/4" FPT	1/2"	4"	27000	4	\$ 305.03
WSS10010	No	10"	1-1/4" FPT	1/2"	1"	2800	3	\$ 309.80
WSS10012	No	10"	1-1/4" FPT	1/2"	1-1/4"	2800	3	\$ 310.12
WSS10015	No	10"	1-1/4" FPT	1/2"	1-1/2"	2800	3	\$ 311.48
WSS10020	No	10"	1-1/4" FPT	1/2"	2"	2800	3	\$ 304.38
WSS10025	No	10"	1-1/4" FPT	1/2"	2-1/2"	16500		\$ 530.63
WSS10030	No	10"	1-1/4" FPT	1/2"	3"	16500	3	\$ 436.37
WSS10040	No	10"	1-1/4" FPT	1/2"	4"	16500	3	\$ 427.86
WSS10050	No	10"	1" FPT	1/2"	5"	34000	3	\$ 377.38
WSS10060	No	10"	1" FPT	1/2"	6"	34000	3	\$ 446.87
WSS12012	No	12"	1-1/4" FPT	1/2"	1-1/4"	2800	2	\$ 384.07
WSS12015	No	12"	1-1/4" FPT	1/2"	1-1/2"	2800	2	\$ 384.41
WSS12020	No	12"	1-1/4" FPT	1/2"	2"	6600	2	\$ 444.41
WSS12030	No	12"	1-1/4" FPT	1/2"	3"	12000	2	\$ 534.27
WSS12040	No	12"	1-1/4" FPT	1/2"	4"	12000	2	\$ 535.15
WSS12050	No	12"	1-1/4" FPT	1/2"	5"	22000	2	\$ 547.25
WSS12060	No	12"	1-1/4" FPT	1/2"	6"	22000	2	\$ 547.48

#### Raised Supports, Single Hole

• This well seal has raised supports which the drop pipe fitting rests on, this keeps the fittings above the nuts and conduit bushing making it possible to incorporate a 3/4" cable hole.



WSS4020	No	4" to 4-1/4"	3/4" FPT	1/2"	2"	2100	12	\$ 89.61
---------	----	--------------	----------	------	----	------	----	----------

Contact your sales rep for any further information

Toll Free: 1-800-561-3164

boshart.com

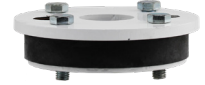
## STEEL WELL SEALS

Part No.	Grommet Kit Included	Well Casing I.D.	Conduit Connection	Vent Size	Drop Pipe Size	Maximum Load - Lbs	Quantity L1 L2	List Price - A
----------	----------------------	------------------	--------------------	-----------	----------------	--------------------	----------------	----------------

List Price Effective: October 15, 2021

### Heavy Duty, Single Hole

• WSS6030HD has raised supports which the drop pipe fitting rests on, this keeps the fittings above the nuts and conduit bushing making it possible to incorporate a 1" cable hole.



WSS6010HD	No	6" to 6-1/4"	1" FPT	1/2"	1"	9000	8	\$ 132.20
WSS6012HD	No	6" to 6-1/4"	1" FPT	1/2"	1-1/4"	9000	8	\$ 132.93
WSS6015HD	No	6" to 6-1/4"	1" FPT	1/2"	1-1/2"	9000	8	\$ 132.47
WSS6020HD	No	6" to 6-1/4"	1" FPT	1/2"	2"	9000	8	\$ 132.85
WSS6030HD	No	6" to 6-1/4"		1/2"	3"	9000	8	\$ 178.23

### Double Hole



WSS351210	No	3-1/2"		1/2"	1-1/4" x 1"		16	\$ 101.64
WSS401010	No	4"		1/2"	1"			\$ 192.66
WSS501212	No	5"		1/2"	1-1/4"			\$ 192.52
WSS601512	No	6"		1/2"	1-1/2" x 1-1/4"			\$ 158.11
WSS621512	No	6-1/4"		1/2"	1-1/2" x 1-1/4"		6	\$ 200.17

## WELL SEAL ACCESSORIES

These accessories are for well seals. For more information please contact inside sales.

Part No.	Size	Description	Quantity L1 L2	List Price - A
----------	------	-------------	----------------	----------------

List Price Effective: October 15, 2021



### Grommet Kit

Grommet kits include a bushing, round gasket and slotted gasket for twisted or flat jacketed pump cable. They create a watertight seal when the bushing is tightened to ensure no contaminated water enters the well.

WS-GK-07	3/4"	For 3/4" wire hole	300	\$ 5.28
WS-GK-10	1"	For 1" wire hole	300	\$ 5.37



### PVC Air Vent

#### PVC,

Air vents are screwed onto well seals for water well ventilation. These vents have four 0.04" slits on each side.

WS-V05	1/2"		500	\$ 6.43
--------	------	--	-----	---------



### Steel Air Vent

#### Zinc Plated Steel,

Air vents are screwed onto well seals for water well ventilation. These vents have a 40 mesh stainless steel screen making them vermin proof.

WS-V05-G	1/2"		40	\$ 22.13
----------	------	--	----	----------

Contact your sales rep for any further information

Toll Free: 1-800-561-3164  
boshart.com