

# GHM, GCN, & BLCN SERIES - HOSE MENDERS & COMBINATION NIPPLES (HOSE FITTINGS)

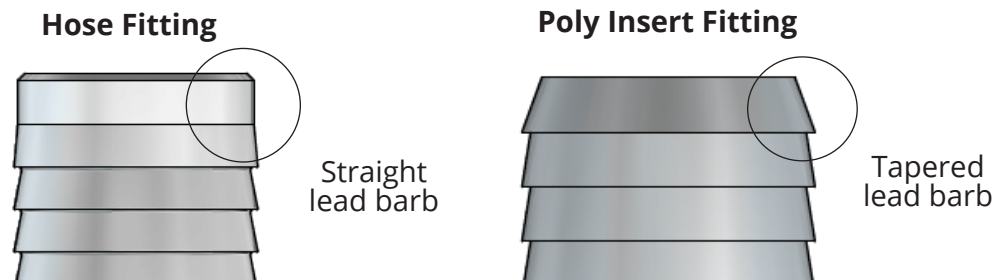
## SPECIFICATIONS:

- System operating pressures and temperatures are limited by the maximum operating pressures and temperatures of the hose they are attached to. Always refer to the hose manufacturer's pressure and temperature ratings.
- In general, hose fittings are not recommended for pressures exceeding 50-75 PSI (depending on application, installation method, size, etc.). Hose fittings are not recommended for critical applications where failure would result in damage to personnel, property, or the environment.
- It is solely the end user's responsibility to determine the suitability of the hose fitting for the intended service.



## FEATURES:

- To identify hose fittings from polyethylene (PE) pipe fittings, look at the lead barb design. Hose fittings are machined with a special lead barb that makes installation into reinforced hoses easier compared to PE pipe fittings which have a tapered lead barb.



## APPLICATIONS:

- Hose menders are used to splice two lengths of hose together or to repair a damaged section of hose. Combination nipples are a versatile means to transition from hose to pipe, adapters, valves or strainers.
- Hose fittings are not to be used with PE pipe. The smaller OD serrations may result in hose blow off.
- Designed to be used with a variety of thermoplastic and natural rubber straight end hoses. These connections are for fluid service only.
- Recommended for low-pressure discharge assemblies and suction service for compatible liquids. Commonly used in trash pump and discharge hose applications.
- Hose fittings are not to be used with compressible gases, high pressure air, steam or any critical application as they could result in blow off.

**BOSHART**  
INDUSTRIES

25 Whaley Avenue, PO Box 310, Milverton, ON CANADA N0K 1M0  
Tel: 800-561-3164

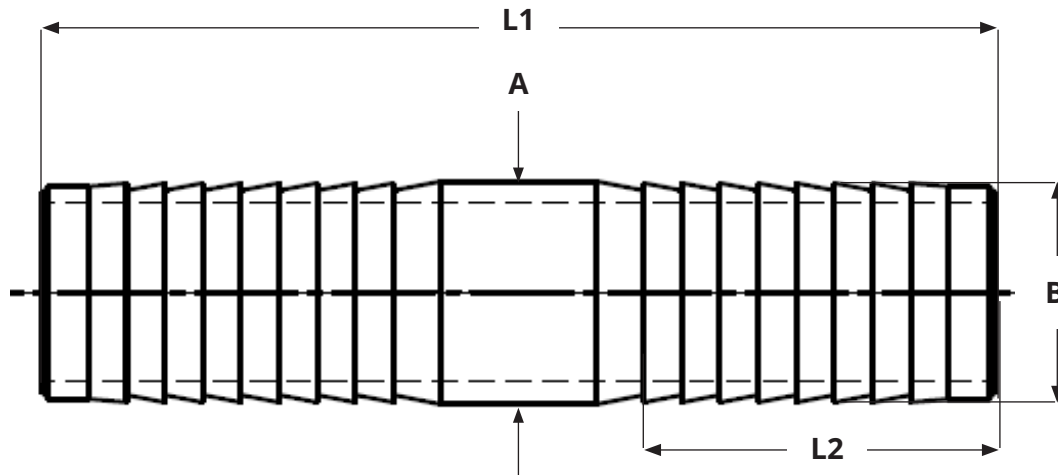
[boshart.com](http://boshart.com) ♦ [blog.boshart.com](http://blog.boshart.com)

© 2020 Boshart Industries Inc. All Rights Reserved.

BII-GHM,GCN,BLCN-0124(81WU)

# GHM SERIES - ZINC PLATED STEEL HOSE MENDER

- Hose Insert Barb x Hose Insert Barb
- Made from zinc plated ASTM A513 Grade MT1015 steel



DIMENSIONS											
Part No.	Size (Hose I.D.)	No. of Barbs	L1		L2		A		B		Weight grams
			in	mm	in	mm	in	mm	in	mm	
GHM-050	1/2"	6	3.50	89.0	1.46	37.2	0.54	13.8	0.53	13.5	27.22
GHM-075	3/4"	6	4.49	114.0	1.83	46.4	0.79	20.0	0.79	20.0	45.36
GHM-100	1"	6	4.50	114.3	1.66	42.2	1.05	26.6	1.03	26.2	99.79
GHM-125	1-1/4"	6	4.49	114.0	1.83	46.4	1.28	32.4	1.28	32.4	217.7
GHM-150	1-1/2"	7	4.49	114.0	1.83	46.4	1.54	39.0	1.54	39.0	272.2
GHM-200	2"	7	4.95	125.7	2.01	51.0	2.05	52.0	2.03	51.5	290.3
GHM-250	2-1/2"	8	5.51	140.0	2.19	55.6	2.56	65.0	2.53	64.2	567.0
GHM-300	3"	8	6.61	167.9	2.78	70.6	3.05	77.5	3.03	77.0	952.5
GHM-400	4"	8	7.87	199.9	3.44	87.4	4.05	102.8	4.04	102.5	1329
GHM-600	6"	10	10.24	260.1	4.36	110.8	6.10	155.0	6.05	153.6	3039

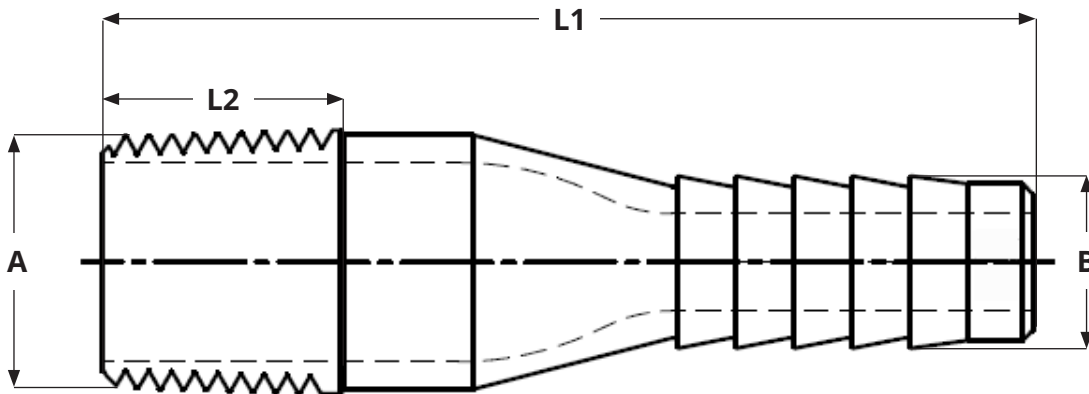
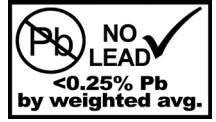


25 Whaley Avenue, PO Box 310, Milverton, ON CANADA N0K 1M0  
Tel: 800-561-3164

[boshart.com](http://boshart.com) ♦ [blog.boshart.com](http://blog.boshart.com)

# GCN SERIES - ZINC PLATED STEEL COMBINATION NIPPLE

- MPT x Hose Insert Barb
- Made from zinc plated ASTM A513 Grade MT1015 steel



DIMENSIONS										
Part No.	Size (Hose I.D.)	No. of Barbs	Thread Dimension (A)	L1		L2		B		Weight grams
				in	mm	in	mm	in	mm	
GCN-050	1/2"	6	1/2"-14 NPT	2.88	73.2	0.74	18.8	0.53	13.5	51.3
GCN-075	3/4"	6	3/4"-14 NPT	3.11	79.0	0.77	19.6	0.79	20.1	83.5
GCN-100	1"	6	1"-11 1/2 NPT	3.35	85.1	0.92	23.4	1.03	26.2	116.1
GCN-125	1-1/4"	6	1-1/4"-11 1/2 NPT	3.60	91.4	0.95	24.1	1.28	32.5	195.5
GCN-150	1-1/2"	7	1-1/2"-11 1/2 NPT	3.90	99.1	0.95	24.1	1.53	38.9	250.4
GCN-200	2"	8	2"-11 1/2 NPT	4.63	117.6	0.96	24.4	2.03	51.6	372.9
GCN-250	2-1/2"	8	2-1/2"- 8 NPT	5.60	142.2	1.31	33.3	2.53	64.3	712.1
GCN-300	3"	8	3"- 8 NPT	5.90	149.9	1.39	35.3	3.03	77.0	863.2
GCN-400	4"	8	4"- 8 NPT	7.10	180.3	1.47	37.3	4.04	102.6	1348
GCN-600	6"	13	6"- 8 NPT	9.85	250.2	1.58	40.1	6.05	153.7	4104



25 Whaley Avenue, PO Box 310, Milverton, ON CANADA N0K 1M0  
Tel: 800-561-3164

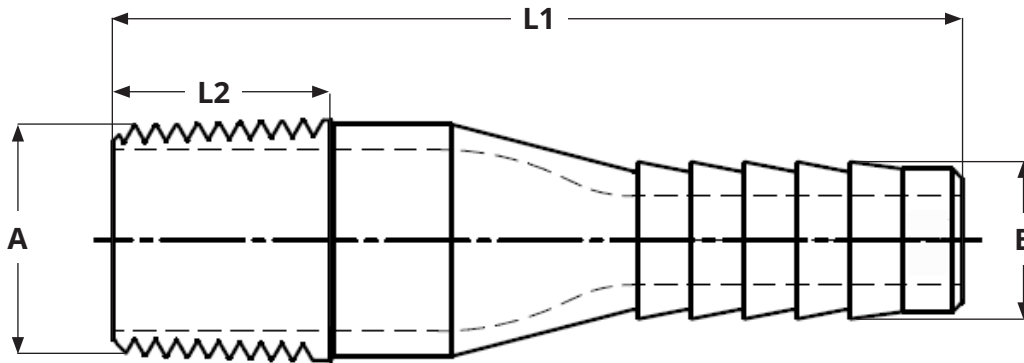
[boshart.com](http://boshart.com) ♦ [blog.boshart.com](http://blog.boshart.com)

© 2020 Boshart Industries Inc. All Rights Reserved.

BII-GCN-0124(81WU)

# BLCN SERIES - BLACK STEEL COMBINATION NIPPLE

- MPT x Hose Insert Barb
- Made from ASTM A513 Grade MT1015 steel



DIMENSIONS										
Part No.	Size (Hose I.D.)	No. of Barbs	Thread Dimension (A)	L1		L2		B		Weight grams
				in	mm	in	mm	in	mm	
BLCN-050	1/2"	6	1/2"-14 NPT	2.88	73.2	0.74	18.8	0.53	13.5	51.3
BLCN-075	3/4"	6	3/4"-14 NPT	3.11	79.0	0.77	19.6	0.79	20.1	83.5
BLCN-100	1"	6	1"-11 1/2 NPT	3.35	85.1	0.92	23.4	1.03	26.2	116.1
BLCN-125	1-1/4"	6	1-1/4"-11 1/2 NPT	3.60	91.4	0.95	24.1	1.28	32.5	195.5
BLCN-150	1-1/2"	7	1-1/2"-11 1/2 NPT	3.90	99.1	0.95	24.1	1.53	38.9	250.4
BLCN-200	2"	8	2"-11 1/2 NPT	4.63	117.6	0.96	24.4	2.03	51.6	372.9
BLCN-250	2-1/2"	8	2-1/2"- 8 NPT	5.60	142.2	1.31	33.3	2.53	64.3	712.1
BLCN-300	3"	8	3"- 8 NPT	5.90	149.9	1.39	35.3	3.03	77.0	863.2
BLCN-400	4"	8	4"- 8 NPT	7.10	180.3	1.47	37.3	4.04	102.6	1348
BLCN-600	6"	13	6"- 8 NPT	9.85	250.2	1.58	40.1	6.05	153.7	4104

For more information on installation, adjustment, repair & operation, visit Boshart Knowledge Base at

[SUPPORT.BOSHART.COM](http://SUPPORT.BOSHART.COM)



25 Whaley Avenue, PO Box 310, Milverton, ON CANADA N0K 1M0  
Tel: 800-561-3164

[boshart.com](http://boshart.com) ♦ [blog.boshart.com](http://blog.boshart.com)