

# CHECK & FOOT VALVES

One-way valves  
preventing backflow  
for both residential and  
industrial applications



**BOSHART**  
INDUSTRIES

**INDEX**

<b>Product Line</b>	<b>Page</b>
Brass Swing Check Valves	1
Brass Check Valves	1
Control Centre Check Valves	2
Bronze Check Valves	3
Cast Iron Check Valves	3
Ductile Iron Check Valves	4
Plastic Check Valves	5
Stainless Steel Check Valves	6
Auto-drain Valve	6
Replacement Break-off Plug	7
Ball Check Valves	7
Y-Strainer	7
Brass Foot Valves	8
Bronze Foot Valves	8
Cast Iron Foot Valves	9
Plastic Foot Valves	9
Stainless Steel Foot Valves	10
Flapper Foot Valves	10

### BRASS SWING CHECK VALVES

Swing check valves ensure that fluid flows in one direction only. They use a disk in the valve that closes when the pressure of the flow decreases ensuring there is no backflow.



Part No.	Size	Connection Type	Quantity List		
			L1	L2	Price - A

List Price Effective: April 15, 2022



**Boshart, Temperature Range: Up to 180°F (82°C), Maximum Pressure: 200 PSI**  
• NSF / ANSI 372 Certified

08060311NL	1/2"	FPT	10	120	\$ 17.90
08060411NL	3/4"	FPT	10	80	\$ 23.62
08060511NL	1"	FPT	5	60	\$ 31.29
08060611NL	1-1/4"	FPT	5	40	\$ 52.79
08060711NL	1-1/2"	FPT	5	30	\$ 68.23
08060811NL	2"	FPT	2	24	\$ 112.54
08060911NL	2-1/2"	FPT	15		\$ 193.30
08061011NL	3"	FPT	6		\$ 274.71
08061111NL	4"	FPT	4		\$ 418.10



**Boshart, Temperature Range: Up to 180°F (82°C), Maximum Pressure: 200 PSI**  
• NSF / ANSI 372 Certified

08060312NL	1/2"	CxC	10	120	\$ 17.90
08060412NL	3/4"	CxC	10	80	\$ 23.62
08060512NL	1"	CxC	5	60	\$ 31.29
08060612NL	1-1/4"	CxC	5	40	\$ 52.79
08060712NL	1-1/2"	CxC	5	30	\$ 68.23
08060812NL	2"	CxC	2	24	\$ 112.54
08060912NL	2-1/2"	CxC	15		\$ 193.30
08061012NL	3"	CxC	6		\$ 274.71

### BRASS CHECK VALVES

Brass check valves ensure that fluid flows in one direction only.



Part No.	Size	Connection Type	Quantity List		
			L1	L2	Price - A

List Price Effective: May 27, 2022



**Boshart, Standard, Poppet Material: Cast Brass, Seal Material: Nitrile Rubber, Temperature Range: Up to 180°F (82°C), Maximum Pressure: 200 PSI**  
• NSF / ANSI 372 Certified

17YBCV050NL	1/2"	FPT	10	100	\$ 16.30
17YBCV075NL	3/4"	FPT	10	80	\$ 22.01
17YBCV100NL	1"	FPT	10	60	\$ 30.46
17YBCV125NL	1-1/4"	FPT	5	40	\$ 41.77
17YBCV150NL	1-1/2"	FPT	5	30	\$ 58.43
17YBCV200NL	2"	FPT	5	20	\$ 95.37
17YBCV300NL	3"	FPT	6		\$ 411.25
17YBCV400NL	4"	FPT	3		\$ 825.82



**Flomatic Valves, Union, Poppet Material: Acetal, Seal Material: Nitrile Rubber, Spring Material: Stainless Steel, Temperature Range: Up to 180°F (82°C), Maximum Pressure: 150 PSI**  
• NSF / ANSI 372 Certified

Dual check valves are designed for installation on potable water lines to protect against both backsiphonage and backpressure of polluted water into the potable water supply.

17-GF8089E	1/2"	FPT			\$ 161.82
17-GF8080E	3/4"	FPT		25	\$ 176.51
17-GF8081E	1"	FPT			\$ 208.05

Contact your sales rep for any further information

Toll Free: 1-800-561-3164  
boshart.com

### CONTROL CENTRE CHECK VALVES

Control centre check valves have tapings for accessories such as gauges, switches and snifter valves.  
Note: accessories shown are not included.



Part No.	Size	Connection Type	Inlet Tapping	Outlet Tapping	Quantity			List Price - A
					L1	L2		

List Price Effective: April 15, 2022



**Boshart, Standard, Poppet Material: Cast Brass, Seal Material: Nitrile Rubber, Temperature Range: Up to 180°F (82°C), Maximum Pressure: 200 PSI**  
• NSF / ANSI 372 Certified

17YBCVA-100NL	1"	FPT	(1) 1/8" FPT	None	10	60		\$ 29.40
17YBCVA-125NL	1-1/4"	FPT	(1) 1/8" FPT	None	5	40		\$ 47.23



**Boshart, Standard, Poppet Material: Cast Brass, Seal Material: Nitrile Rubber, Temperature Range: Up to 180°F (82°C), Maximum Pressure: 200 PSI**  
• NSF / ANSI 372 Certified

17YBCVB-100NL	1"	FPT	(1) 1/8" FPT	(1) 1/4" FPT	10	60		\$ 30.75
17YBCVB-125NL	1-1/4"	FPT	(1) 1/8" FPT	(1) 1/4" FPT	5	40		\$ 48.88
17YBCVB-150NL	1-1/2"	FPT	(1) 1/8" FPT	(1) 1/4" FPT	5	30		\$ 51.00
17YBCVB-200NL	2"	FPT	(1) 1/8" FPT	(1) 1/4" FPT	5	20		\$ 110.83



**Boshart, Standard, Poppet Material: Cast Brass, Seal Material: Nitrile Rubber, Temperature Range: Up to 180°F (82°C), Maximum Pressure: 200 PSI**  
• NSF / ANSI 372 Certified

17YBCVC-100NL	1"	FPT	(1) 1/8" FPT	(1) 1/4" FPT, (1) 1/8" FPT	10	60		\$ 29.72
17YBCVC-125NL	1-1/4"	FPT	(1) 1/8" FPT	(1) 1/4" FPT, (1) 1/8" FPT	5	40		\$ 46.46

### BRONZE CHECK VALVES

Bronze check valves ensure that fluid flows in one direction only.

Part No.	Size	Connection Type	Quantity			List Price - A
			L1	L2		

List Price Effective: May 27, 2022



**Boshart, Standard, Poppet Material: Cast Bronze, Seal Material: Nitrile Rubber, Temperature Range: Up to 180°F (82°C), Maximum Pressure: 200 PSI**  
• NSF / ANSI 372 Certified

17CV200NL	2"	FPT	5	20		\$ 140.75
17CV150NL	1-1/2"	FPT	5	30		\$ 69.16
17CV125NL	1-1/4"	FPT	5	40		\$ 60.87
17CV100NL	1"	FPT	10	60		\$ 37.50
17CV075NL	3/4"	FPT	10	80		\$ 26.72
17CV050NL	1/2"	FPT	10	100		\$ 20.41



**Boshart, Standard, Poppet Material: Cast Bronze, Seal Material: Nitrile Rubber, Temperature Range: Up to 180°F (82°C), Maximum Pressure: 200 PSI**

17CVMF-125-100NL	1-1/4" x 1"	MPT x FPT	10	60		\$ 67.87
------------------	-------------	-----------	----	----	--	----------



**Flomatic Valves, Standard, Poppet Material: Stainless Steel, Seal Material: Viton, Spring Material: Stainless Steel, Temperature Range: Up to 400°F (204°C), Maximum Pressure: 100 PSI**  
• NSF / ANSI 372 Certified

17-4034HTE	2"	FPT				\$ 472.82
17-4033HTE	1-1/2"	FPT				\$ 348.83
17-4032HTE	1-1/4"	FPT				\$ 262.67
17-4031HTE	1"	FPT				\$ 191.24
17-4030HTE	3/4"	FPT				\$ 189.12

Contact your sales rep for any further information

Toll Free: 1-800-561-3164  
boshart.com

### BRONZE CHECK VALVES

Part No.	Size	Connection Type	Quantity		List Price - A
			L1	L2	

List Price Effective: May 27, 2022



**Flomatic Valves, Hex, Poppet Material: Acetal, Seal Material: Nitrile Rubber, Spring Material: Stainless Steel, Temperature Range: Up to 180°F (82°C), Maximum Pressure: 400 PSI**  
 • NSF / ANSI 372 Certified

17-4201E	1"	FPT			\$ 133.17
17-4202EVFD	1-1/4"	FPT	36		\$ 172.32



**Flomatic Valves, Standard, Poppet Material: Nylon 11, Seal Material: Nitrile Rubber, Spring Material: Stainless Steel, Temperature Range: Up to 180°F (82°C), Maximum Pressure: 200 PSI**  
 • NSF / ANSI 372 Certified

17-5159E	3/8"	FPT	10		\$ 138.46
17-5118E	1/4"	FPT	10		\$ 137.74
17-4037E	4"	FPT			\$ 2,977.67
17-4036E	3"	FPT			\$ 1,718.96
17-4035E	2-1/2"	FPT			\$ 1,424.75
17-4034E	2"	FPT	16		\$ 332.02
17-4033E	1-1/2"	FPT	25		\$ 205.94
17-4032E	1-1/4"	FPT	36		\$ 147.57
17-4031E	1"	FPT	1	50	\$ 106.36
17-4030E	3/4"	FPT	100		\$ 102.03
17-4029E	1/2"	FPT	100		\$ 100.74



**Flomatic Valves, Hex - Long Threads, Poppet Material: Acetal, Seal Material: Nitrile Rubber, Spring Material: Stainless Steel, Temperature Range: Up to 180°F (82°C), Maximum Pressure: 400 PSI**  
 • NSF / ANSI 372 Certified

17-4242XLE	1-1/4"	MPT x FPT	36		\$ 166.01
17-4201XLE	1"	MPT x FPT	36		\$ 101.69



**Flomatic Valves, Hex, Poppet Material: Acetal, Seal Material: Nitrile Rubber, Spring Material: Stainless Steel, Temperature Range: Up to 180°F (82°C), Maximum Pressure: 400 PSI**  
 • NSF / ANSI 372 Certified  
 • 17-4221LE has longer threads for use with PVC pipe.  
 • 17-42 Series is hex shaped for easy wrenching.

17-4242E	1-1/4"	MPT x FPT	36		\$ 144.99
17-4223E	1-1/2" x 1-1/4"	MPT x FPT	36		\$ 210.13
17-4221LE	1-1/4" x 1"	MPT x FPT	50		\$ 109.27
17-4079E	2"	MPT x FPT	16		\$ 344.62
17-4071E	1"	MPT x FPT	49		\$ 104.13

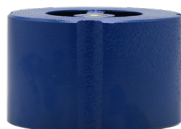
### CAST IRON CHECK VALVES

Cast iron check valves ensure that fluid flows in one direction only. They are coated with blue epoxy coating.



Part No.	Size	Connection Type	Quantity		List Price - A
			L1	L2	

List Price Effective: April 15, 2022



**Flomatic Valves, Standard, Poppet Material: Bronze, Spring Material: Stainless Steel, Temperature Range: Up to 180°F (82°C), Maximum Pressure: 200 PSI**  
 • NSF / ANSI 372 Certified  
 • 2" to 6" ANSI 125 / 250  
 • 10" ANSI 125

18WSCVCI-2	2"	Wafer			\$ 771.92
18WSCVCI-2.5	2-1/2"	Wafer			\$ 853.17
18WSCVCI-3	3"	Wafer			\$ 893.79
18WSCVCI-4	4"	Wafer			\$ 1,171.93
18WSCVCI-5	5"	Wafer			\$ 2,312.63
18WSCVCI-6	6"	Wafer			\$ 2,109.49
18WSCVCI-8	8"	Flange			\$ 3,778.33
18WSCVCI-10	10"	Wafer			\$ 5,722.18

Contact your sales rep for any further information

Toll Free: 1-800-561-3164  
 boshart.com



### CAST IRON CHECK VALVES

Part No.	Size	Connection Type	Quantity		List Price - A
			L1	L2	

List Price Effective: April 15, 2022



**Flomatic Valves, Split Disc, Spring Material: Stainless Steel, Temperature Range: Up to 180°F (82°C), Maximum Pressure: 200 PSI**  
 • NSF / ANSI 372 Certified

18SDCVCI-2	2"	Wafer			\$ 628.16
18SDCVCI-2.5	2-1/2"	Wafer			\$ 728.16
18SDCVCI-3	3"	Wafer			\$ 809.42
18SDCVCI-4	4"	Wafer			\$ 1,031.31
18SDCVCI-5	5"	Wafer			\$ 1,662.60
18SDCVCI-6	6"	Wafer			\$ 1,750.09
18SDCVCI-8	8"	Wafer			\$ 2,603.25
18SDCVCI-10	10"	Wafer			\$ 3,934.58
18SDCVCI-12	12"	Wafer			\$ 5,909.69



**Flomatic Valves, Globe, Poppet Material: Brass, Spring Material: Stainless Steel, Temperature Range: Up to 180°F (82°C), Maximum Pressure: 200 PSI**  
 • NSF / ANSI 372 Certified

18GSCVCI-2	2"	Flange			\$ 1,115.69
18GSCVCI-2.5	2-1/2"	Flange			\$ 1,493.83
18GSCVCI-3	3"	Flange			\$ 1,637.59
18GSCVCI-4	4"	Flange			\$ 2,153.24
18GSCVCI-5	5"	Flange			\$ 3,765.82
18GSCVCI-6	6"	Flange			\$ 3,478.31
18GSCVCI-8	8"	Flange			\$ 5,472.16
18GSCVCI-10	10"	Flange			\$ 8,203.56
18GSCVCI-12	12"	Flange			\$ 16,228.98

### DUCTILE IRON CHECK VALVES

Ductile iron check valves ensure that fluid flows in one direction only.

Part No.	Size	Connection Type	Quantity		List Price - A
			L1	L2	

List Price Effective: April 15, 2022



**Flomatic Valves, Standard, Poppet Material: Acetal, Seal Material: Nitrile Rubber, Temperature Range: Up to 180°F (82°C), Maximum Pressure: 400 PSI**  
 • NSF / ANSI 372 Certified

174031DI	1"	FPT	49		\$ 61.91
174032DI	1-1/4"	FPT	36		\$ 86.91
174033DI	1-1/2"	FPT	25		\$ 118.76
174088	5"	FPT			\$ 2,136.56
174089	6"	FPT			\$ 2,650.41
174090	8"	FPT			\$ 4,678.79
177936	2-1/2"	FPT			\$ 526.47
177937	2"	FPT	16		\$ 219.97
177938	3"	FPT	5		\$ 741.03
177939	4"	FPT	4		\$ 1,152.13



**Flomatic Valves, VFD, Poppet Material: Ductile Iron, Seal Material: Nitrile Rubber, Temperature Range: Up to 180°F (82°C), Maximum Pressure: 600 PSI**  
 • NSF / ANSI 372 Certified

174088VFD	5"	FPT			\$ 2,571.09
174089VFD	6"	FPT			\$ 3,104.77
174090VFD	8"	FPT			\$ 5,484.73
177936VFD	2-1/2"	FPT			\$ 672.52
177937VFD	2"	FPT			\$ 252.42
177938VFD	3"	FPT			\$ 926.74
177939VFD	4"	FPT			\$ 1,370.28

Contact your sales rep for any further information

Toll Free: 1-800-561-3164  
 boshart.com

### DUCTILE IRON CHECK VALVES

Part No.	Size	Connection Type	Quantity		List Price - A
			L1	L2	

List Price Effective: April 15, 2022



**Flomatic Valves, DIX, Poppet Material: Ductile Iron, Seal Material: Nitrile Rubber, Temperature Range: Up to 180°F (82°C), Maximum Pressure: 400 PSI**  
• NSF / ANSI 372 Certified

174089DIX	6"	FPT			\$ 2,019.37
174091DIX	10"	FPT			\$ 7,933.20
177938DIX	3"	FPT			\$ 701.37



**Flomatic Valves, VFD, Poppet Material: Ductile Iron, Seal Material: Nitrile Rubber, Temperature Range: Up to 180°F (82°C), Maximum Pressure: 600 PSI**  
• NSF / ANSI 372 Certified

174075VFD	5"	MPT x FPT			\$ 1,931.02
174077VFD	4"	MPT x FPT			\$ 1,099.83
174081VFD	6"	MPT x FPT			\$ 2,223.10
174083VFD	3"	MPT x FPT	5		\$ 780.70
174084VFD	2"	MPT x FPT	16		\$ 454.36
174087VFD	6" x 5"	MPT x FPT			\$ 1,947.25

### PLASTIC CHECK VALVES

Plastic check valves ensure that fluid flows in one direction only.



Part No.	Size	Connection Type	Quantity		List Price - A
			L1	L2	

List Price Effective: April 15, 2022



**Flomatic Valves, Primary Material: Acetal, Poppet Material: Nylon 11, Seal Material: Viton, Spring Material: Stainless Steel, Temperature Range: Up to 180°F (82°C), Maximum Pressure: 150 PSI**  
• NSF / ANSI 372 Certified

175239	1/2"	FPT			\$ 70.20
175359	3/8"	FPT	10		\$ 53.63



**Flomatic Valves, Primary Material: Polypropylene, Poppet Material: Polypropylene, Seal Material: Viton, Spring Material: Stainless Steel, Temperature Range: Up to 180°F (82°C), Maximum Pressure: 150 PSI**  
• NSF / ANSI 372 Certified

175357	1/2"	FPT	10		\$ 72.15
175358	3/4"	FPT	10		\$ 87.75



**Boshart, Primary Material: PVC, Seal Material: EPDM, Spring Material: 304 Stainless Steel, Temperature Range: Up to 140°F (60°C), Maximum Working Pressure: 100 PSI @ 73°F**

1710-05	1/2"	FPT	10	120	\$ 6.78
1710-07	3/4"	FPT	120		\$ 7.43
1710-10	1"	FPT	8	80	\$ 10.86
1710-12	1-1/4"	FPT	6	60	\$ 14.51
1710-15	1-1/2"	FPT	60		\$ 15.00
1710-20	2"	FPT	40		\$ 18.15
1710-30	3"	FPT	6		\$ 202.49
1710S-05	1/2"	Socket	120		\$ 6.78
1710S-07	3/4"	Socket	120		\$ 7.43
1710S-10	1"	Socket	80		\$ 10.86
1710S-12	1-1/4"	Socket	60		\$ 14.51
1710S-15	1-1/2"	Socket	60		\$ 15.00
1710S-20	2"	Socket	40		\$ 18.15



**Boshart, Primary Material: PVC, Seal Material: Nitrile Rubber, Spring Material: Stainless Steel, Maximum Working Pressure: 150 PSI @ 73°F**  
• NSF / ANSI 372 Certified  
• Threads: ASME / ANSI B1.20.1

17PCV075	3/4"	FPT	20		\$ 10.43
17PCV100	1"	FPT	20		\$ 11.61
17PCV125	1-1/4"	FPT	20		\$ 14.68
17PCV150	1-1/2"	FPT	20		\$ 18.75
17PCV200	2"	FPT	10		\$ 41.65



Contact your sales rep for any further information

Toll Free: 1-800-561-3164  
boshart.com

### STAINLESS STEEL CHECK VALVES

Stainless steel check valves ensure that fluid flows in one direction only. They have a higher corrosion resistance.



Part No.	Size	Connection Type	Quantity			List Price - A
			L1	L2		

List Price Effective: May 27, 2022



**Boshart, Standard, Primary Material: 304 Stainless Steel, Poppet Material: 304 Stainless Steel, Seal Material: Viton, Temperature Range: Up to 180°F (82°C), Maximum Pressure: 200 PSI**  
• NSF / ANSI 372 Certified

17CVSS-050	1/2"	FPT	10	100	\$ 27.90
17CVSS-075	3/4"	FPT	10	80	\$ 36.89
17CVSS-100	1"	FPT	10	60	\$ 52.04
17CVSS-125	1-1/4"	FPT	5	40	\$ 69.76
17CVSS-150	1-1/2"	FPT	5	30	\$ 94.34
17CVSS-200	2"	FPT	5	20	\$ 159.37
17CVSS-300	3"	FPT	6		\$ 674.94
17CVSS-400	4"	FPT	3		\$ 1,267.60
17CVSSMF-125-100	1-1/4" x 1"	MPT x FPT	10	60	\$ 69.28



**Flomatic Valves, Hex, Primary Material: 303 Stainless Steel, Poppet Material: Delrin, Seal Material: Nitrile Rubber, Spring Material: Stainless Steel, Temperature Range: Up to 180°F (82°C), Maximum Pressure: 400 PSI**  
• NSF / ANSI 372 Certified

17-4201SS2	1"	FPT			\$ 93.02
17-4202SS2	1-1/4"	FPT		36	\$ 147.21



**Flomatic Valves, Standard, Primary Material: 316 Stainless Steel, Poppet Material: Stainless Steel, Seal Material: Viton, Spring Material: Stainless Steel, Temperature Range: Up to 400°F (204°C), Maximum Pressure: 450 PSI**  
• NSF / ANSI 372 Certified

17-4031S6	1"	FPT		50	\$ 184.99
17-4032S6	1-1/4"	FPT		36	\$ 284.30
17-4033S6	1-1/2"	FPT		25	\$ 360.24
17-4034S6	2"	FPT		16	\$ 525.77
17-7938S6-PLG	3"	FPT		5	\$ 2,023.19
17-7939S6-PLG	4"	FPT		4	\$ 3,022.12



**Flomatic Valves, Union, Primary Material: 316 Stainless Steel, Poppet Material: Acetal, Seal Material: Nitrile Rubber, Spring Material: Stainless Steel, Temperature Range: Up to 180°F (82°C), Maximum Pressure: 150 PSI**  
• NSF / ANSI 372 Certified

Dual check valves are designed for installation on potable water lines to protect against both backsiphonage and backpressure of polluted water into the potable water supply.

17-GF8080S6	3/4"	FPT			\$ 279.33
17-GF8081S6	1"	FPT			\$ 271.99

### AUTO-DRAIN VALVE

This auto-drain valve is designed for use in domestic well water systems, irrigation and sprinkler systems, agricultural watering. It provides automatic drainage of water lines when line pressure drops below 10 PSI (approx. 5 gpm) in a closed water system. Stainless steel spring, fasteners & valve disc.

Part No.	Size	Connection Type	Quantity			List Price - A
			L1	L2		

List Price Effective: May 27, 2022



**Flomatic Valves, Temperature Range: Up to 180°F (82°C), Maximum Pressure: 400 PSI**  
• NSF / ANSI 372 Certified

17-4501P	1"	MPT		12	\$ 100.87
----------	----	-----	--	----	-----------

Contact your sales rep for any further information

Toll Free: 1-800-561-3164  
boshart.com



### REPLACEMENT BREAK-OFF PLUG

These break off plugs are used with check valves. When broken off the riser pipe is able to drain. They are threaded to install into the valve.



Part No.	Size	Quantity	List	
			L1	L2 Price - A

List Price Effective: April 15, 2022

#### Flomatic Valves, Temperature Range: Up to 180°F (82°C), Maximum Pressure: 600 PSI

• NSF / ANSI 372 Certified



1776098-6	3/8"	For 3" valves		\$ 124.40
1776098-7	3/8"	For 4" valves		\$ 124.40
1776098	3/8"	For 5" or 6" valves		\$ 124.40
1776098-11	1/2"	For 10" valves		\$ 180.30

### BALL CHECK VALVES

Ball check valves ensure that fluid flows in one direction only. This is done by using a weighted ball to stop the flow when the pressure of the flow decreases preventing backflow.

• NSF / ANSI 372 Certified



Part No.	Size	Connection Type	Quantity	
			L1	L2 Price - A

List Price Effective: May 27, 2022

#### Flomatic Valves, PVC, Ball Material: Nitrile Rubber, Temperature Range: Up to 150°F (66°C),

Maximum Pressure: 100 PSI

Slip connection available. Contact inside sales for details.



172131T	1"	FPT		\$ 159.26
172132T	1-1/4"	FPT		\$ 136.69
172133T	1-1/2"	FPT		\$ 218.81
172134T	2"	FPT		\$ 223.08

#### Flomatic Valves, Cast Iron, Ball Material: Nitrile Rubber, Temperature Range: Up to 180°F (82°C),

Maximum Pressure: 150 PSI



172141	1-1/4"	FPT		\$ 308.78
172142	2"	FPT		\$ 416.02

#### Flomatic Valves, Cast Iron, Ball Material: Phenolic, Temperature Range: Up to 180°F (82°C),

Maximum Pressure: 150 PSI

Note: 3" & 4" don't have an access cover.



173232	1"	FPT		\$ 601.29
173233	1-1/4"	FPT		\$ 614.29
173234	1-1/2"	FPT	10	\$ 633.78
173235	2"	FPT		\$ 744.29
173236	2-1/2"	FPT		\$ 1,738.85
172044	3"	FPT		\$ 1,787.59
172045	4"	Flange		\$ 3,243.67

### Y-STRAINER

Y-Strainers come with a clean-out plug and are not rated for steam application.

• NSF / ANSI 372 Certified



Part No.	Size	Connection Type	Quantity	
			L1	L2

List Price Effective: April 15, 2022

#### Flomatic Valves, Bronze, Temperature Range: Up to 180°F (82°C), Maximum Pressure: 400 PSI



16YS-S-05	1/2"	FPT		
16YS-S-07	3/4"	FPT	10	50
16YS-S-10	1"	FPT	6	36
16YS-S-12	1-1/4"	FPT	6	24
16YS-S-15	1-1/2"	FPT	2	12
16YS-S-20	2"	FPT	8	

Contact your sales rep for any further information

Toll Free: 1-800-561-3164  
boshart.com

### BRASS FOOT VALVES

Brass foot valves prevent water from back flowing into the water source.



Part No.	Size	Connection Type	Quantity List		
			L1	L2	Price - A

List Price Effective: April 15, 2022



**Boshart, Poppet Material: Cast Brass, Seal Material: Nitrile Rubber, Temperature Range: Up to 180°F (82°C), Maximum Pressure: 200 PSI**  
• NSF / ANSI 372 Certified

17YBFV050NL	1/2"	FPT	10	100	\$ 16.12
17YBFV075NL	3/4"	FPT	10	80	\$ 19.71
17YBFV100NL	1"	FPT	10	60	\$ 27.16
17YBFV125NL	1-1/4"	FPT	5	40	\$ 38.05
17YBFV150NL	1-1/2"	FPT	5	30	\$ 54.30
17YBFV200NL	2"	FPT	5	20	\$ 84.48
17YBFV300NL	3"	FPT	8		\$ 333.26
17YBFV400NL	4"	FPT	4		\$ 587.39

### BRONZE FOOT VALVES

Bronze foot valves prevent water from back flowing into the water source.



Part No.	Size	Connection Type	Quantity List		
			L1	L2	Price - A

List Price Effective: May 27, 2022



**Boshart, Standard, Poppet Material: Bronze, Seal Material: Nitrile Rubber, Temperature Range: Up to 180°F (82°C), Maximum Pressure: 200 PSI**  
• NSF / ANSI 372 Certified

17FV050NL	1/2"	FPT	10	100	\$ 22.12
17FV075NL	3/4"	FPT	10	80	\$ 25.82
17FV100NL	1"	FPT	10	60	\$ 35.29
17FV125NL	1-1/4"	FPT	5	40	\$ 46.31
17FV150NL	1-1/2"	FPT	5	30	\$ 64.29
17FV200NL	2"	FPT	5	20	\$ 111.88
17FV300NL	3"	FPT	8		\$ 500.34



**Flomatic Valves, Standard, Poppet Material: Acetal, Seal Material: Nitrile Rubber, Spring Material: Stainless Steel, Temperature Range: Up to 180°F (82°C), Maximum Pressure: 250 PSI**  
• NSF / ANSI 372 Certified

17-4100E	3/4"	FPT	100		\$ 92.17
17-4101E	1"	FPT	49		\$ 102.65
17-4103E	1-1/4"	FPT	36		\$ 124.68
17-4104E	1-1/2"	FPT	25		\$ 200.12
17-4105E	2"	FPT	16		\$ 316.68
17-4106E	2-1/2"	FPT			\$ 1,048.68
17-4107E	3"	FPT			\$ 1,445.68
17-4108E	4"	FPT			\$ 2,409.47



**Flomatic Valves, Slim, Poppet Material: Acetal, Seal Material: Nitrile Rubber, Spring Material: Stainless Steel, Temperature Range: Up to 180°F (82°C), Maximum Pressure: 250 PSI**  
• NSF / ANSI 372 Certified  
• Will pass through a 2" pipe

17-4102E	1-1/4"	FPT	49		\$ 120.39
----------	--------	-----	----	--	-----------

Contact your sales rep for any further information

Toll Free: 1-800-561-3164  
boshart.com

### CAST IRON FOOT VALVES

Cast iron foot valves prevent water from back flowing into the water source.



Part No.	Size	Connection Type	Quantity		List Price - A
			L1	L2	

List Price Effective: April 15, 2022

**Flomatic Valves, Poppet Material: Acetal, Seal Material: Nitrile Rubber, Spring Material: Stainless Steel, Temperature Range: Up to 180°F (82°C), Maximum Pressure: 250 PSI**  
 • NSF / ANSI 372 Certified

174764	2"	FPT			\$ 356.27
174765	2-1/2"	FPT			\$ 493.78
174766	3"	FPT			\$ 615.65
174767	4"	FPT			\$ 756.30
174789VFD	6"	FPT			\$ 3,118.91

### PLASTIC FOOT VALVES

Plastic foot valves prevent water from back flowing into the water source.



Part No.	Size	Connection Type	Quantity		List Price - A
			L1	L2	

List Price Effective: April 15, 2022



**Flomatic Valves, Primary Material: Acetal, Poppet Material: Nylon 11, Seal Material: Nitrile Rubber, Spring Material: Stainless Steel, Temperature Range: Up to 140°F (60°C), Maximum Working Pressure: 150 PSI @ 73°F**  
 • NSF / ANSI 372 Certified

175619	3/8"	FPT	10		\$ 36.15
175620	1/2"	FPT	10		\$ 62.27



**Boshart, Primary Material: PVC, Poppet Material: Acetal, Seal Material: Nitrile Rubber, Spring Material: Stainless Steel, Maximum Pressure: 150 PSI**  
 • NSF / ANSI 372 Certified



17PFV075	3/4"	FPT	20		\$ 10.32
17PFV100	1"	FPT	20		\$ 11.09
17PFV125	1-1/4"	FPT	20		\$ 13.42
17PFV150	1-1/2"	FPT	20		\$ 17.07
17PFV200	2"	FPT	10		\$ 24.70
17PFV-250	2-1/2"	FPT	12		\$ 93.61
17PFV-300	3"	FPT	12		\$ 133.32
17PFVB100125	1" or 1-1/4"	Insert	20		\$ 17.78
17PFVM075150	3/4" - 1-1/2"	MPT	20		\$ 18.45

Contact your sales rep for any further information

Toll Free: 1-800-561-3164  
 boshart.com

### STAINLESS STEEL FOOT VALVES

Stainless steel foot valves prevent water from back flowing into the water source. They have a higher corrosion resistance.



Part No.	Size	Connection Type	Quantity		List
			L1	L2	Price - A
List Price Effective: April 15, 2022					
Boshart, Poppet Material: 304 Stainless Steel, Seal Material: Viton, Temperature Range: Up to 180°F (82°C), Maximum Pressure: 200 PSI					
• NSF / ANSI 372 Certified					
17FVSS-050	1/2"	FPT	10	100	\$ 31.21
17FVSS-075	3/4"	FPT	10	80	\$ 36.49
17FVSS-100	1"	FPT	10	60	\$ 51.41
17FVSS-125	1-1/4"	FPT	5	40	\$ 65.17
17FVSS-150	1-1/2"	FPT	5	30	\$ 85.38
17FVSS-200	2"	FPT	5	20	\$ 152.84
17FVSS-300	3"	FPT	8		\$ 701.71
17FVSS-400	4"	FPT	4		\$ 1,155.16

### FLAPPER FOOT VALVES

Flapper foot valves prevent water from back flowing into the water source. They use a flapper that closes when the pressure of the flow decreases ensuring there is no backflow.



Part No.	Size	Connection Type	Quantity		List
			L1	L2	Price - A
			List Price Effective: April 15, 2022		
Boshart, PVC, Seal Material: Nitrile Rubber, 150 PSI @ 73°F					
17PFVF-300	3"	FPT	6		\$ 133.32
17PFVF-400	4"	FPT	6		\$ 235.95
17PFVF-600	6"	FPT	2		\$ 951.97
Boshart, Cast Iron, Temperature Range: Up to 80°F (27°C), Maximum Pressure: 20 PSI					
174964	2"	FPT			\$ 184.70
174966	3"	FPT			\$ 409.79
174967	4"	FPT			\$ 578.36
174969	6"	FPT			\$ 1,271.81
Flomatic Valves, Cast Iron, Seal Material: EPDM, Temperature Range: Up to 180°F (82°C), Maximum Pressure: 200 PSI					
18FLFVCI-2	2"	Flange			\$ 3,212.67
18FLFVCI-2.5	2-1/2"	Flange			\$ 3,247.04
18FLFVCI-3	3"	Flange			\$ 3,278.29
18FLFVCI-4	4"	Flange			\$ 3,962.71
18FLFVCI-5	5"	Flange			\$ 5,359.66
18FLFVCI-6	6"	Flange			\$ 6,034.70
18FLFVCI-8	8"	Flange			\$ 8,728.58
18FLFVCI-10	10"	Flange			\$ 12,113.14
18FLFVCI-12	12"	Flange			\$ 18,294.72

Contact your sales rep for any further information

Toll Free: 1-800-561-3164  
boshart.com