

14SFHK-M(S)10 SERIES 1" SPIN-OUT FILTER / SEPARATOR HOUSING & KITS with male adapters

APPLICATION:

- Agriculture
- Industrial / Commercial
- Pre-treatment
- Whole House Residential
- Irrigation

FEATURES:

- Compatible with Schedule 40 & 80 PVC Pipe
- Gripper Ribs on Filter Bowl
 - No tools Required to install / remove filter bowl
- Flush System - 1/2" MPT Connection for Purge Valve
- Suitable for Installation on either the Suction or Pressure Side of Pump
- Elements marked with mesh rating and replacement O-Ring for easy identification

SPECIFICATION:

- Inlet/Outlet Connection 1" Slip or 1-1/4" Spigot: ASTM D2466
- Threaded Connections: ASME/ANSI B1.20.1
- Filter Head Materials: ASTM D1784 - Grade 1 PVC
- Maximum Pressure Rating: 150 PSI @ 73°F (23°C)
- Maximum Temperature Rating: 100°F (38°C) @ 40 PSI
- Flow Rate: 1-25 GPM

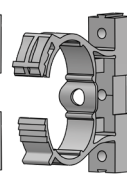
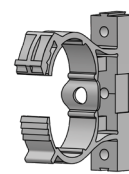
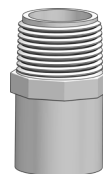
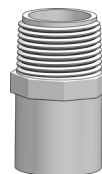
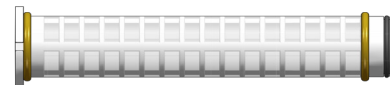
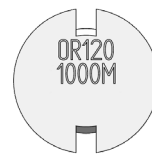
CERTIFICATION:

- NSF/ANSI 372

KIT INCLUDES:

- Housing
- Purge Valve
- Filter or Separator Element
 - (not included in basic unit 14SFHK-M10 or 14SFHK-MS10)
- Mounting Clamps and hardware
- 1" Spigot x 1" MPT Adapters - not installed

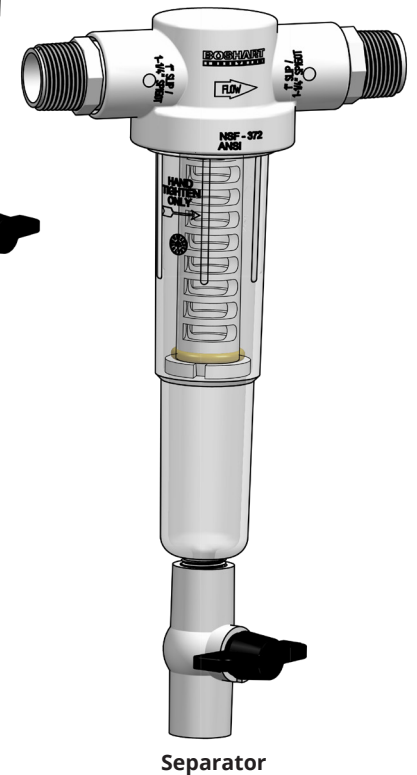
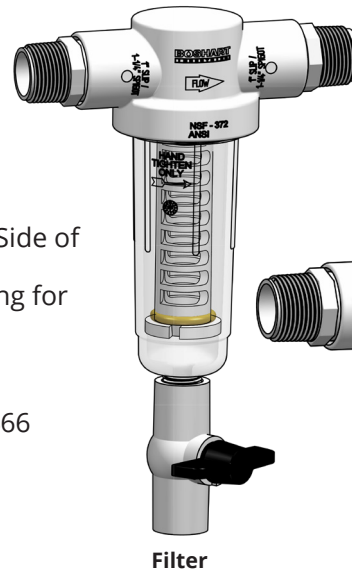
MATERIAL LIST	
Part Name	Material
Head	HR-5009 RIGID PVC (White)
Bowl	Polycarbonate Lexan 12R
Bowl O-Ring	Buna-N (Size AS568-226)
Element Core	HR-5009 RIGID PVC (White)
Element O-Ring	Buna-N (Size AS568-120)
Screen	316 Stainless Steel
Purge Valve	Body: PVC, Handle: ABS, Seat: TPE
Mounting Clamp	PVC
Adapters	SCH. 40 PVC (White)



LEAD FREE



Certified by IAPMO
R&T Against NSF/
ANSI Standard
372 For Lead Free
Compliance.



BOSHART
INDUSTRIES

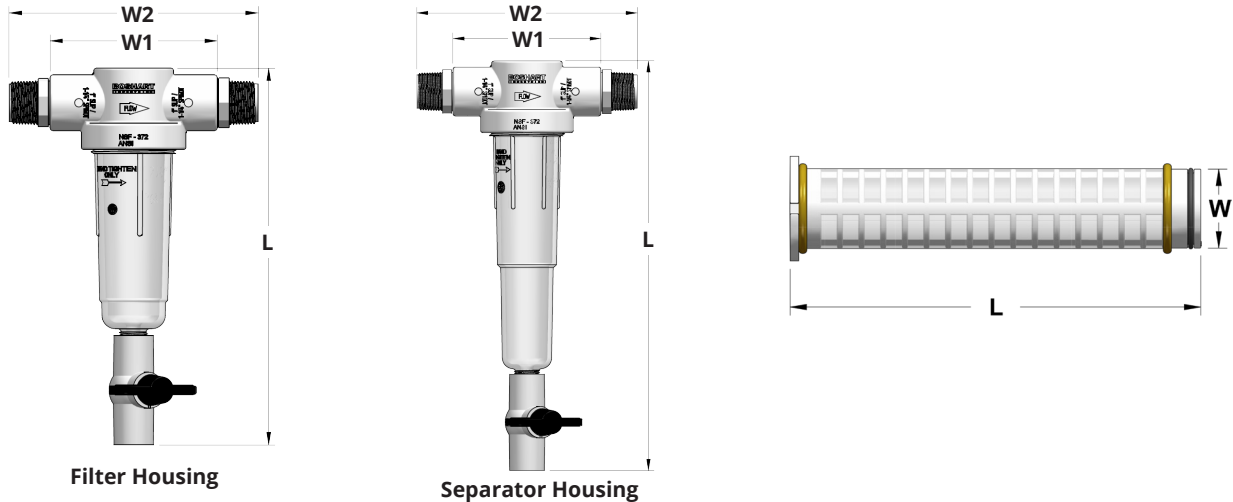
25 Whaley Avenue, PO Box 310, Milverton, ON CANADA N0K 1M0
Tel: 800-561-3164

boshart.com • blog.boshart.com

© 2019 Boshart Industries Inc. All Rights Reserved.

BII-14SFHK-M(S)10-0524(131FH) V3

14SFHK-M(S)10 SERIES 1" SPIN-OUT FILTER / SEPARATOR HOUSING & KITS with male adapters



DIMENSIONS															
Part No.	Filter Element			Complete Unit with Valve						Filter Element Only				Weight	
	Mesh Size	Micron	Opening	W1		W2		L		W		L		lb	gram
				inch	mm	inch	mm	inch	mm	inch	mm	inch	mm		
SEDIMENT FILTER KIT															
14SFHK-M10	Basic Unit			4.97	126.2	7.41	188.2	11.21	248.7	—	—	—	—	1.12	509
14SFHK-M10SM024	24	711	0.0280	4.97	126.2	7.41	188.2	11.21	248.7	1.18	30.0	5.16	131.1	1.29	584
14SFHK-M10SM030	30	533	0.0232	4.97	126.2	7.41	188.2	11.21	248.7	1.18	30.0	5.16	131.1	1.29	584
14SFHK-M10SM040	40	381	0.0165	4.97	126.2	7.41	188.2	11.21	248.7	1.18	30.0	5.16	131.1	1.29	584
14SFHK-M10SM060	60	254	0.0100	4.97	126.2	7.41	188.2	11.21	248.7	1.18	30.0	5.16	131.1	1.29	584
14SFHK-M10SM100	100	152	0.0060	4.97	126.2	7.41	188.2	11.21	248.7	1.18	30.0	5.16	131.1	1.29	584
14SFHK-M10SM140	140	104	0.0040	4.97	126.2	7.41	188.2	11.21	248.7	1.18	30.0	5.16	131.1	1.29	584
14SFHK-M10SM200	200	74	0.0029	4.97	126.2	7.41	188.2	11.21	248.7	1.18	30.0	5.16	131.1	1.29	584
14SFHK-M10SM250	250	61	0.0024	4.97	126.2	7.41	188.2	11.21	248.7	1.18	30.0	5.16	131.1	1.29	584
14SFHK-M10SM500	500	30	0.0012	4.97	126.2	7.41	188.2	11.21	248.7	1.18	30.0	5.16	131.1	1.29	584
14SFHK-M10SM1000	1000	15	0.0006	4.97	126.2	7.41	188.2	11.21	248.7	1.18	30.0	5.16	131.1	1.29	584
SEDIMENT SEPARATOR KIT															
14SFHK-MS10	Basic Unit			4.97	126.2	7.41	188.2	13.83	351.3	—	—	—	—	1.16	526
14SFHK-MS10SM024	24	711	0.0280	4.97	126.2	7.41	188.2	13.83	351.3	1.18	30.0	5.16	131.1	1.33	601
14SFHK-MS10SM030	30	533	0.0232	4.97	126.2	7.41	188.2	13.83	351.3	1.18	30.0	5.16	131.1	1.33	601
14SFHK-MS10SM040	40	381	0.0165	4.97	126.2	7.41	188.2	13.83	351.3	1.18	30.0	5.16	131.1	1.33	601
14SFHK-MS10SM060	60	254	0.0100	4.97	126.2	7.41	188.2	13.83	351.3	1.18	30.0	5.16	131.1	1.33	601
14SFHK-MS10SM100	100	152	0.0060	4.97	126.2	7.41	188.2	13.83	351.3	1.18	30.0	5.16	131.1	1.33	601
14SFHK-MS10SM140	140	104	0.0040	4.97	126.2	7.41	188.2	13.83	351.3	1.18	30.0	5.16	131.1	1.33	601
14SFHK-MS10SM200	200	74	0.0029	4.97	126.2	7.41	188.2	13.83	351.3	1.18	30.0	5.16	131.1	1.33	601
14SFHK-MS10SM250	250	61	0.0024	4.97	126.2	7.41	188.2	13.83	351.3	1.18	30.0	5.16	131.1	1.33	601
14SFHK-MS10SM500	500	30	0.0012	4.97	126.2	7.41	188.2	13.83	351.3	1.18	30.0	5.16	131.1	1.33	601
14SFHK-MS10SM1000	1000	15	0.0006	4.97	126.2	7.41	188.2	13.83	351.3	1.18	30.0	5.16	131.1	1.33	601

BOSHART
INDUSTRIES

25 Whaley Avenue, PO Box 310, Milverton, ON CANADA N0K 1M0
Tel: 800-561-3164

boshart.com ♦ blog.boshart.com