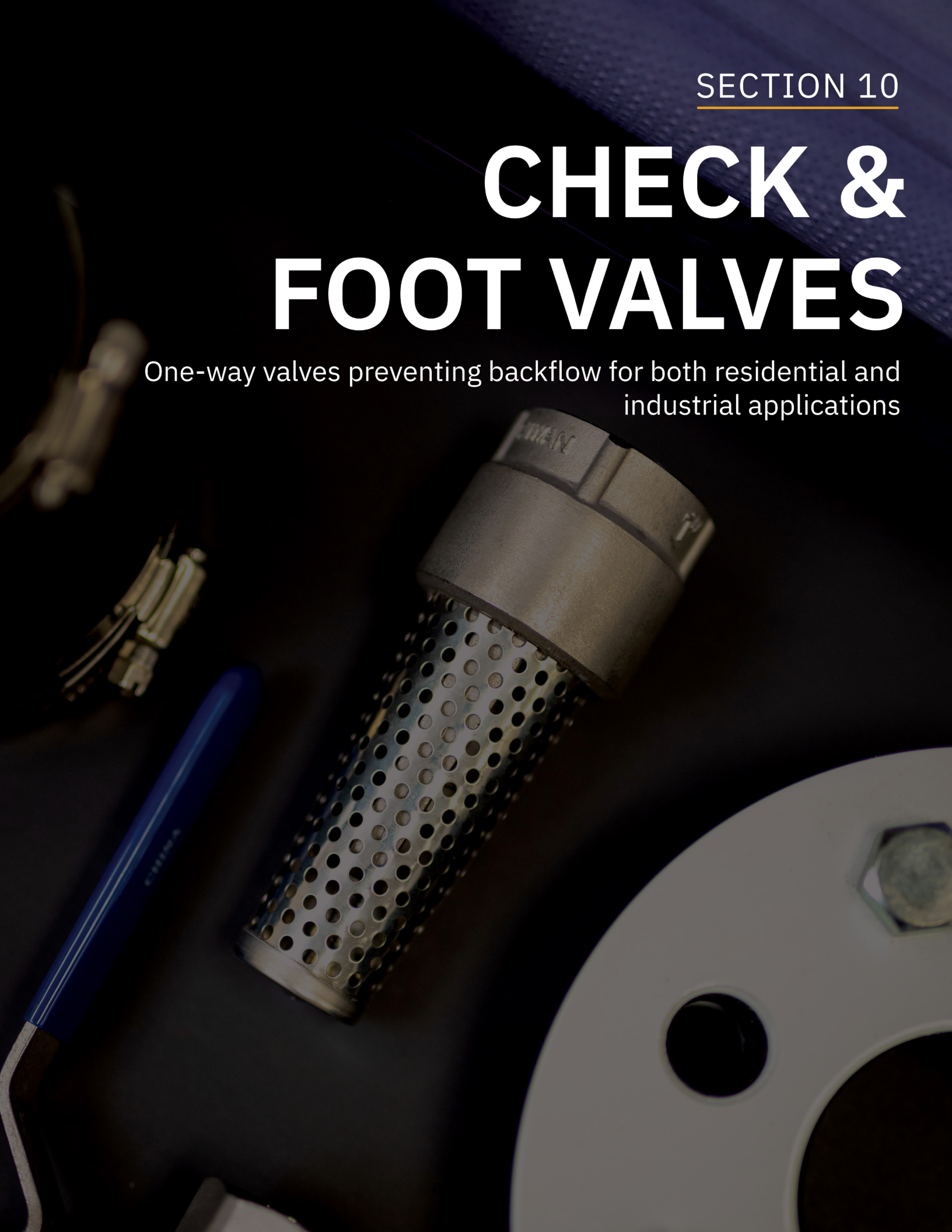


# CHECK & FOOT VALVES

One-way valves preventing backflow for both residential and industrial applications



**INDEX**

<b>Product Line</b>	<b>Page</b>
Brass Swing Check Valves	1
Brass Check Valves	1
Control Centre Check Valves	2
Bronze Check Valves	2
Cast Iron Check Valves	3
Ductile Iron Check Valves	4
Plastic Check Valves	6
Stainless Steel Check Valves	7
Auto-drain Valve	7
Replacement Break-off Plug	8
Ball Check Valves	8
Y-Strainer	8
Brass Foot Valves	9
Bronze Foot Valves	9
Cast Iron Foot Valves	10
Plastic Foot Valves	10
Stainless Steel Foot Valves	11
Flapper Foot Valves	11

### BRASS SWING CHECK VALVES

Swing check valves ensure that fluid flows in one direction only. They use a disk in the valve that closes when the pressure of the flow decreases ensuring there is no backflow.



CHECK & FOOT  
VALVES

Part No.	Size	Connection Type	Quantity	
			L1	L2
<b>Boshart, Temperature Range: Up to 180°F (82°C), Maximum Pressure: 200 PSI</b>				
• Cracking Pressure: 0 PSI				
• NSF / ANSI 372 Certified				
08060311NL	1/2"	FPT	10	120
08060411NL	3/4"	FPT	10	80
08060511NL	1"	FPT	5	60
08060611NL	1-1/4"	FPT	5	40
08060711NL	1-1/2"	FPT	5	30
08060811NL	2"	FPT	2	24
08060911NL	2-1/2"	FPT	15	
08061011NL	3"	FPT	6	
08061111NL	4"	FPT	4	

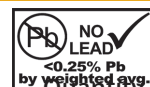


<b>Boshart, Temperature Range: Up to 180°F (82°C), Maximum Pressure: 200 PSI</b> • Cracking Pressure: 0 PSI • NSF / ANSI 372 Certified				
08060312NL	1/2"	CxC	10	120
08060412NL	3/4"	CxC	10	80
08060512NL	1"	CxC	5	60
08060612NL	1-1/4"	CxC	5	40
08060712NL	1-1/2"	CxC	5	30
08060812NL	2"	CxC	2	24
08060912NL	2-1/2"	CxC	15	
08061012NL	3"	CxC	6	



### BRASS CHECK VALVES

Brass check valves ensure that fluid flows in one direction only.



Part No.	Size	Connection Type	Quantity	
			L1	L2
<b>Boshart, Standard, Poppet Material: Cast Brass, Seal Material: Nitrile Rubber, Temperature Range: Up to 180°F (82°C), Maximum Pressure: 200 PSI</b> • Cracking Pressure: 0.5 PSI • NSF / ANSI 372 Certified				
17YBCV050NL	1/2"	FPT	10	100
17YBCV075NL	3/4"	FPT	10	80
17YBCV100NL	1"	FPT	10	60
17YBCV125NL	1-1/4"	FPT	5	40
17YBCV150NL	1-1/2"	FPT	5	30
17YBCV200NL	2"	FPT	5	20
17YBCV300NL	3"	FPT	6	
17YBCV400NL	4"	FPT	3	



<b>Flomatic Valves, Union, Poppet Material: Acetal, Seal Material: Nitrile Rubber, Spring Material: Stainless Steel, Temperature Range: Up to 180°F (82°C), Maximum Pressure: 150 PSI</b> • Cracking Pressure: 1 PSI • NSF / ANSI 372 Certified Dual check valves are designed for installation on potable water lines to protect against both backsiphonage and backpressure of polluted water into the potable water supply.				
17-GF8089E	1/2"	FPT		
17-GF8080E	3/4"	FPT		25
17-GF8081E	1"	FPT		



Contact your sales rep for any further information

Toll Free: 1-800-561-3164  
boshart.com

### CONTROL CENTRE CHECK VALVES

Control centre check valves have tapings for accessories such as gauges, switches and snifter valves.  
Note: accessories shown are not included.



Part No.	Size	Connection Type	Inlet Tapping	Outlet Tapping	Quantity	
					L1	L2
<b>Boshart, Standard, Poppet Material: Cast Brass, Seal Material: Nitrile Rubber, Temperature Range: Up to 180°F (82°C), Maximum Pressure: 200 PSI</b>						
• Cracking Pressure:0.5 PSI						
• NSF / ANSI 372 Certified						
17YBCVA-100NL	1"	FPT	(1) 1/8" FPT	None	10	60
17YBCVA-125NL	1-1/4"	FPT	(1) 1/8" FPT	None	5	40
<b>Boshart, Standard, Poppet Material: Cast Brass, Seal Material: Nitrile Rubber, Temperature Range: Up to 180°F (82°C), Maximum Pressure: 200 PSI</b>						
• Cracking Pressure:0.5 PSI						
• NSF / ANSI 372 Certified						
17YBCVB-100NL	1"	FPT	(1) 1/8" FPT	(1) 1/4" FPT	10	60
17YBCVB-125NL	1-1/4"	FPT	(1) 1/8" FPT	(1) 1/4" FPT	5	40
17YBCVB-150NL	1-1/2"	FPT	(1) 1/8" FPT	(1) 1/4" FPT	5	30
17YBCVB-200NL	2"	FPT	(1) 1/8" FPT	(1) 1/4" FPT	5	20
<b>Boshart, Standard, Poppet Material: Cast Brass, Seal Material: Nitrile Rubber, Temperature Range: Up to 180°F (82°C), Maximum Pressure: 200 PSI</b>						
• Cracking Pressure:0.5 PSI						
• NSF / ANSI 372 Certified						
17YBCVC-100NL	1"	FPT	(1) 1/8" FPT	(1) 1/4" FPT, (1) 1/8" FPT	10	60
17YBCVC-125NL	1-1/4"	FPT	(1) 1/8" FPT	(1) 1/4" FPT, (1) 1/8" FPT	5	40

### BRONZE CHECK VALVES

Bronze check valves ensure that fluid flows in one direction only.

Part No.	Size	Connection Type	Quantity	
			L1	L2
<b>Boshart, Standard, Poppet Material: Cast Bronze, Seal Material: Nitrile Rubber, Temperature Range: Up to 180°F (82°C), Maximum Pressure: 200 PSI</b>				
• Cracking Pressure:0.5 PSI				
• NSF / ANSI 372 Certified				
17CV200NL	2"	FPT	5	20
17CV150NL	1-1/2"	FPT	5	30
17CV125NL	1-1/4"	FPT	5	40
17CV100NL	1"	FPT	10	60
17CV075NL	3/4"	FPT	10	80
17CV050NL	1/2"	FPT	10	100
<b>Boshart, Standard, Poppet Material: Cast Bronze, Seal Material: Nitrile Rubber, Temperature Range: Up to 180°F (82°C), Maximum Pressure: 200 PSI</b>				
• Cracking Pressure: 0.5 PSI				
17CVMF-125-100NL	1-1/4" x 1"	MPT x FPT	10	60
<b>Flomatic Valves, Standard, Poppet Material: Stainless Steel, Seal Material: Viton, Spring Material: Stainless Steel, Temperature Range: Up to 400°F (204°C), Maximum Pressure: 100 PSI</b>				
• Cracking Pressure: 1 PSI				
• NSF / ANSI 372 Certified				
17-4034HTE	2"	FPT		
17-4033HTE	1-1/2"	FPT		
17-4032HTE	1-1/4"	FPT		
17-4031HTE	1"	FPT		
17-4030HTE	3/4"	FPT		

Contact your sales rep for any further information

Toll Free: 1-800-561-3164  
boshart.com

Rev. 5.6

### BRONZE CHECK VALVES

Part No.	Size	Connection Type	Quantity	
			L1	L2



**Flomatic Valves, Hex, Poppet Material: Acetal, Seal Material: Nitrile Rubber, Spring Material: Stainless Steel, Temperature Range: Up to 180°F (82°C), Maximum Pressure: 400 PSI**

- Cracking Pressure: 1 PSI
- NSF / ANSI 372 Certified

17-4201E	1"	FPT		
17-4202EVFD	1-1/4"	FPT		36



**Flomatic Valves, Standard, Poppet Material: Nylon 11, Seal Material: Nitrile Rubber, Spring Material: Stainless Steel, Temperature Range: Up to 180°F (82°C), Maximum Pressure: 200 PSI**

- Cracking Pressure: 1 PSI
- NSF / ANSI 372 Certified

17-5159E	3/8"	FPT		10
17-5118E	1/4"	FPT		10
17-4037E	4"	FPT		
17-4036E	3"	FPT		
17-4035E	2-1/2"	FPT		
17-4034E	2"	FPT		16
17-4033E	1-1/2"	FPT		25
17-4032E	1-1/4"	FPT		36
17-4031E	1"	FPT	1	50
17-4030E	3/4"	FPT		100
17-4029E	1/2"	FPT		100



**Flomatic Valves, Hex - Long Threads, Poppet Material: Acetal, Seal Material: Nitrile Rubber, Spring Material: Stainless Steel, Temperature Range: Up to 180°F (82°C), Maximum Pressure: 400 PSI**

- Cracking Pressure: 1 PSI
- NSF / ANSI 372 Certified

17-4242XLE	1-1/4"	MPT x FPT		36
17-4201XLE	1"	MPT x FPT		36



**Flomatic Valves, Hex, Poppet Material: Acetal, Seal Material: Nitrile Rubber, Spring Material: Stainless Steel, Temperature Range: Up to 180°F (82°C), Maximum Pressure: 400 PSI**

- Cracking Pressure: 1 PSI
- NSF / ANSI 372 Certified
- 17-4221LE has longer threads for use with PVC pipe.
- 17-42 Series is hex shaped for easy wrenching.

17-4242E	1-1/4"	MPT x FPT		36
17-4223E	1-1/2" x 1-1/4"	MPT x FPT		36
17-4221LE	1-1/4" x 1"	MPT x FPT		50
17-4079E	2"	MPT x FPT		16

Contact your sales rep for any further information

**Toll Free: 1-800-561-3164**  
**boshart.com**

### DUCTILE IRON CHECK VALVES

Ductile iron check valves ensure that fluid flows in one direction only.



Part No.	Size	Connection Type	Quantity	
			L1	L2



**Flomatic Valves, Split Disc, Spring Material: Stainless Steel, Temperature Range: Up to 180°F (82°C), Maximum Pressure: 200 PSI**

- Cracking Pressure: 1 PSI
- NSF / ANSI 372 Certified

18SDCVCI-2	2"	Wafer		
18SDCVCI-2.5	2-1/2"	Wafer		
18SDCVCI-3	3"	Wafer		
18SDCVCI-4	4"	Wafer		
18SDCVCI-5	5"	Wafer		
18SDCVCI-6	6"	Wafer		
18SDCVCI-8	8"	Wafer		
18SDCVCI-10	10"	Wafer		
18SDCVCI-12	12"	Wafer		

### DUCTILE IRON CHECK VALVES

Ductile iron check valves ensure that fluid flows in one direction only.

Part No.	Size	Connection Type	Quantity	
			L1	L2



**Flomatic Valves, Standard, Poppet Material: Ductile Iron, Seal Material: Nitrile Rubber, Temperature Range: Up to 180°F (82°C), Maximum Pressure: 600 PSI**

- Cracking Pressure: 1 PSI
- NSF / ANSI 372 Certified

174031DI	1"	FPT	49	
174032DI	1-1/4"	FPT	36	
174033DI	1-1/2"	FPT	25	
177937	2"	FPT	16	
177936	2-1/2"	FPT		
177938	3"	FPT	5	
177939	4"	FPT	4	
174088	5"	FPT		
174089	6"	FPT		
174090	8"	FPT		



**Flomatic Valves, VFD, Poppet Material: Ductile Iron, Seal Material: Nitrile Rubber, Temperature Range: Up to 180°F (82°C), Maximum Pressure: 600 PSI**

- Cracking Pressure: 1 PSI
- NSF / ANSI 372 Certified

177937VFD	2"	FPT		
177936VFD	2-1/2"	FPT		
177938VFD	3"	FPT		
177939VFD	4"	FPT		
174088VFD	5"	FPT		
174089VFD	6"	FPT		
174090VFD	8"	FPT		



**Flomatic Valves, DIX, Poppet Material: Ductile Iron, Seal Material: Nitrile Rubber, Temperature Range: Up to 180°F (82°C), Maximum Pressure: 400 PSI**

- Cracking Pressure: 1 PSI
- NSF / ANSI 372 Certified

177938DIX	3"	FPT		
174089DIX	6"	FPT		
174091DIX	10"	FPT		

Contact your sales rep for any further information

**Toll Free: 1-800-561-3164**  
boshart.com

Rev. 5.4



### DUCTILE IRON CHECK VALVES

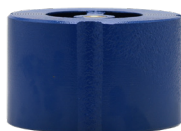
Part No.	Size	Connection Type	Quantity	
			L1	L2



**Flomatic Valves, VFD, Poppet Material: Ductile Iron, Seal Material: Nitrile Rubber, Temperature Range: Up to 180°F (82°C), Maximum Pressure: 600 PSI**

- Cracking Pressure: 1 PSI
- NSF / ANSI 372 Certified

174084VFD	2"	MPT x FPT	16	
174083VFD	3"	MPT x FPT	5	
174077VFD	4"	MPT x FPT		
174075VFD	5"	MPT x FPT		
174081VFD	6"	MPT x FPT		
174087VFD	6" x 5"	MPT x FPT		



**Flomatic Valves, Standard, Poppet Material: Bronze, Seal Material: EPDM, Spring Material: Stainless Steel, Temperature Range: Up to 200°F (93°C), Maximum Pressure: 200 PSI**

- Cracking Pressure: 1 PSI
- NSF/ANSI 14, 61 & 372
- 2" - 6" ASME 150# and 300#
- 8" - 10" ASME 150#

18WSCVCI-2	2"	Wafer		
18WSCVCI-2.5	2-1/2"	Wafer		
18WSCVCI-3	3"	Wafer		
18WSCVCI-4	4"	Wafer		
18WSCVCI-5	5"	Wafer		
18WSCVCI-6	6"	Wafer		
18WSCVCI-8	8"	Wafer		
18WSCVCI-10	10"	Wafer		



**Flomatic Valves, Globe, Poppet Material: Brass, Seal Material: EPDM, Spring Material: Stainless Steel, Temperature Range: Up to 200°F (93°C), Maximum Pressure: 200 PSI**

- Cracking Pressure: 1 PSI
- NSF/ANSI 14, 61 & 372
- ASME 150#: Max Pressure 300 PSI at 150°F

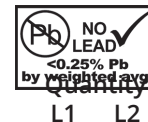
18GSCVCI-2	2"	Flange		
18GSCVCI-2.5	2-1/2"	Flange		
18GSCVCI-3	3"	Flange		
18GSCVCI-4	4"	Flange		
18GSCVCI-5	5"	Flange		
18GSCVCI-6	6"	Flange		
18GSCVCI-8	8"	Flange		
18GSCVCI-10	10"	Flange		
18GSCVCI-12	12"	Flange		

Contact your sales rep for any further information

Toll Free: 1-800-561-3164  
boshart.com

### PLASTIC CHECK VALVES

Plastic check valves ensure that fluid flows in one direction only.



Part No. Size Connection Type



**Flomatic Valves, Primary Material: Acetal, Poppet Material: Nylon 11, Seal Material: Viton, Spring Material: Stainless Steel, Temperature Range: Up to 180°F (82°C), Maximum Pressure: 150 PSI**  
 • Cracking Pressure: 1 PSI  
 • NSF / ANSI 372 Certified

175239	1/2"	FPT	
175359	3/8"	FPT	10



**Flomatic Valves, Primary Material: Polypropylene, Poppet Material: Polypropylene, Seal Material: Viton, Spring Material: Stainless Steel, Temperature Range: Up to 180°F (82°C), Maximum Pressure: 150 PSI**  
 • Cracking Pressure: 1 PSI  
 • NSF / ANSI 372 Certified

175357	1/2"	FPT	10
175358	3/4"	FPT	10



**Boshart, Primary Material: PVC, Seal Material: EPDM, Spring Material: 304 Stainless Steel, Temperature Range: Up to 140°F (60°C), Maximum Working Pressure: 100 PSI @ 73°F**  
 • Cracking Pressure: 0.5 PSI

1710-05	1/2"	FPT	10	120
1710-07	3/4"	FPT	120	
1710-10	1"	FPT	8	80
1710-12	1-1/4"	FPT	6	60
1710-15	1-1/2"	FPT	6	60
1710-20	2"	FPT	4	40
1710-30	3"	FPT	6	
1710S-05	1/2"	Socket	10	120
1710S-07	3/4"	Socket	10	120
1710S-10	1"	Socket	8	80
1710S-12	1-1/4"	Socket	6	60
1710S-15	1-1/2"	Socket	60	
1710S-20	2"	Socket	40	



**Boshart, Primary Material: PVC, Seal Material: Nitrile Rubber, Spring Material: Stainless Steel, Maximum Working Pressure: 150 PSI @ 73°F**  
 • Cracking Pressure: 0.5 PSI  
 • NSF / ANSI 372 Certified  
 • Threads: ASME / ANSI B1.20.1

17PCV075	3/4"	FPT	20
17PCV100	1"	FPT	20
17PCV125	1-1/4"	FPT	20
17PCV150	1-1/2"	FPT	20
17PCV200	2"	FPT	10



Contact your sales rep for any further information

Toll Free: 1-800-561-3164  
 boshart.com

Rev. 5.5



### STAINLESS STEEL CHECK VALVES

Stainless steel check valves ensure that fluid flows in one direction only. They have a higher corrosion resistance.



CHECK & FOOT  
VALVES

Part No. Size Connection Type



**Boshart, Standard, Primary Material: 304 Stainless Steel, Poppet Material: 304 Stainless Steel, Seal Material: Viton, Temperature Range: Up to 180°F (82°C), Maximum Pressure: 200 PSI**

- Cracking Pressure: 0.5 PSI
- NSF / ANSI 372 Certified

17CVSS-050	1/2"	FPT	10	100
17CVSS-075	3/4"	FPT	10	80
17CVSS-100	1"	FPT	10	60
17CVSS-125	1-1/4"	FPT	5	40
17CVSS-150	1-1/2"	FPT	5	30
17CVSS-200	2"	FPT	5	20
17CVSS-300	3"	FPT	6	
17CVSS-400	4"	FPT	3	
17CVSSMF-125-100	1-1/4" x 1"	MPT x FPT	10	60



**Flomatic Valves, Hex, Primary Material: 303 Stainless Steel, Poppet Material: Delrin, Seal Material: Nitrile Rubber, Spring Material: Stainless Steel, Temperature Range: Up to 180°F (82°C), Maximum Pressure: 400 PSI**

- Cracking Pressure: 1 PSI
- NSF / ANSI 372 Certified

17-4201SS2	1"	FPT		
17-4202SS2	1-1/4"	FPT		36



**Flomatic Valves, Standard, Primary Material: 316 Stainless Steel, Poppet Material: Stainless Steel, Seal Material: Viton, Spring Material: Stainless Steel, Temperature Range: Up to 400°F (204°C), Maximum Pressure: 450 PSI**

- Cracking Pressure: 1 PSI
- NSF / ANSI 372 Certified

17-4031S6	1"	FPT		50
17-4032S6	1-1/4"	FPT		36
17-4033S6	1-1/2"	FPT		25
17-4034S6	2"	FPT		16
17-7938S6-PLG	3"	FPT		5
17-7939S6-PLG	4"	FPT		4



**Flomatic Valves, Union, Primary Material: 316 Stainless Steel, Poppet Material: Acetal, Seal Material: Nitrile Rubber, Spring Material: Stainless Steel, Temperature Range: Up to 180°F (82°C), Maximum Pressure: 150 PSI**

- Cracking Pressure: 1 PSI
- NSF / ANSI 372 Certified

Dual check valves are designed for installation on potable water lines to protect against both backsiphonage and backpressure of polluted water into the potable water supply.

17-GF8080S6	3/4"	FPT		
17-GF8081S6	1"	FPT		

### AUTO-DRAIN VALVE

This auto-drain valve is designed for use in domestic well water systems, irrigation and sprinkler systems, agricultural watering. It provides automatic drainage of water lines when line pressure drops below 10 PSI (approx. 5 gpm) in a closed water system. Stainless steel spring, fasteners & valve disc.

Part No. Size Connection Type Quantity  
L1 L2



**Flomatic Valves, Temperature Range: Up to 180°F (82°C), Maximum Pressure: 400 PSI**

- NSF / ANSI 372 Certified

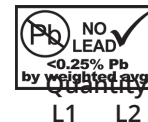
17-4501P	1"	MPT		12
----------	----	-----	--	----

Contact your sales rep for any further information

Toll Free: 1-800-561-3164  
boshart.com

### REPLACEMENT BREAK-OFF PLUG

These break off plugs are used with check valves. When broken off the riser pipe is able to drain. They are threaded to install into the valve.



Part No. Size

**Flomatic Valves, Temperature Range: Up to 180°F (82°C), Maximum Pressure: 600 PSI**

• NSF / ANSI 372 Certified



1776098-6	3/8"	For 3" valves
1776098-7	3/8"	For 4" valves
1776098	3/8"	For 5" or 6" valves
1776098-11	1/2"	For 10" valves

### BALL CHECK VALVES

Ball check valves ensure that fluid flows in one direction only. This is done by using a weighted ball to stop the flow when the pressure of the flow decreases preventing backflow.

• Cracking Pressure: 1 PSI

• NSF / ANSI 372 Certified



Part No. Size Connection Type Quantity  
L1 L2



**Flomatic Valves, PVC, Ball Material: Nitrile Rubber, Temperature Range: Up to 150°F (66°C),**

**Maximum Pressure: 100 PSI**

Slip connection available. Contact inside sales for details.

172131T	1"	FPT
172132T	1-1/4"	FPT
172133T	1-1/2"	FPT
172134T	2"	FPT



**Flomatic Valves, Cast Iron, Ball Material: Nitrile Rubber, Temperature Range: Up to 180°F (82°C),**

**Maximum Pressure: 150 PSI**

172141	1-1/4"	FPT
172142	2"	FPT



**Flomatic Valves, Cast Iron, Ball Material: Phenolic, Temperature Range: Up to 180°F (82°C),**

**Maximum Pressure: 150 PSI**

Note: 3" & 4" don't have an access cover.

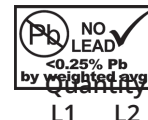
173232	1"	FPT	
173233	1-1/4"	FPT	
173234	1-1/2"	FPT	10
173235	2"	FPT	
173236	2-1/2"	FPT	
172044	3"	FPT	
172045	4"	Flange	

### Y-STRAINER

Y-Strainers come with a clean-out plug and are not rated for steam application.

• Cracking Pressure: 1 PSI

• NSF / ANSI 372 Certified



Part No. Size Connection Type

**Flomatic Valves, Bronze, Temperature Range: Up to 180°F (82°C), Maximum Pressure: 400 PSI**



16YS-S-05	1/2"	FPT		
16YS-S-07	3/4"	FPT	10	50
16YS-S-10	1"	FPT	6	36
16YS-S-12	1-1/4"	FPT	6	24
16YS-S-15	1-1/2"	FPT	2	12
16YS-S-20	2"	FPT	8	

Contact your sales rep for any further information

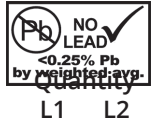
Toll Free: 1-800-561-3164

boshart.com

Rev. 5.5

### BRASS FOOT VALVES

Brass foot valves prevent water from back flowing into the water source.



CHECK & FOOT  
VALVES

Part No. Size Connection Type

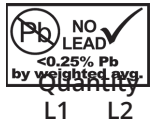


**Boshart, Poppet Material: Cast Brass, Seal Material: Nitrile Rubber, Temperature Range: Up to 180°F (82°C), Maximum Pressure: 200 PSI**  
 • Cracking Pressure: 0.5 PSI  
 • NSF / ANSI 372 Certified

17YBFV050NL	1/2"	FPT	10	100
17YBFV075NL	3/4"	FPT	10	80
17YBFV100NL	1"	FPT	10	60
17YBFV125NL	1-1/4"	FPT	5	40
17YBFV150NL	1-1/2"	FPT	5	30
17YBFV200NL	2"	FPT	5	20
17YBFV300NL	3"	FPT	8	
17YBFV400NL	4"	FPT	4	

### BRONZE FOOT VALVES

Bronze foot valves prevent water from back flowing into the water source.



Part No. Size Connection Type



**Boshart, Standard, Poppet Material: Bronze, Seal Material: Nitrile Rubber, Temperature Range: Up to 180°F (82°C), Maximum Pressure: 200 PSI**  
 • Cracking Pressure: 1 PSI  
 • NSF / ANSI 372 Certified

17FV050NL	1/2"	FPT	10	100
17FV075NL	3/4"	FPT	10	80
17FV100NL	1"	FPT	10	60
17FV125NL	1-1/4"	FPT	5	40
17FV150NL	1-1/2"	FPT	5	30
17FV200NL	2"	FPT	5	20
17FV300NL	3"	FPT	8	



**Flomatic Valves, Standard, Poppet Material: Acetal, Seal Material: Nitrile Rubber, Spring Material: Stainless Steel, Temperature Range: Up to 180°F (82°C), Maximum Pressure: 250 PSI**  
 • Cracking Pressure: 1 PSI  
 • NSF / ANSI 372 Certified

17-4100E	3/4"	FPT		100
17-4101E	1"	FPT		49
17-4103E	1-1/4"	FPT		36
17-4104E	1-1/2"	FPT		25
17-4105E	2"	FPT		16
17-4106E	2-1/2"	FPT		
17-4107E	3"	FPT		
17-4108E	4"	FPT		



**Flomatic Valves, Slim, Poppet Material: Acetal, Seal Material: Nitrile Rubber, Spring Material: Stainless Steel, Temperature Range: Up to 180°F (82°C), Maximum Pressure: 250 PSI**  
 • NSF / ANSI 372 Certified  
 • Will pass through a 2" pipe

17-4102E	1-1/4"	FPT		49
----------	--------	-----	--	----

Contact your sales rep for any further information

Toll Free: 1-800-561-3164

boshart.com

### CAST IRON FOOT VALVES

Cast iron foot valves prevent water from back flowing into the water source.

CHECK & FOOT  
VALVES



Part No.	Size	Connection Type	Quantity	
			L1	L2
<b>Flomatic Valves, Poppet Material: Acetal, Seal Material: Nitrile Rubber, Spring Material: Stainless Steel, Temperature Range: Up to 180°F (82°C), Maximum Pressure: 250 PSI</b> • Cracking Pressure: 1 PSI • NSF / ANSI 372 Certified				
174764	2"	FPT		
174765	2-1/2"	FPT		
174766	3"	FPT		
174767	4"	FPT		

### PLASTIC FOOT VALVES

Plastic foot valves prevent water from back flowing into the water source.



Part No.	Size	Connection Type	Quantity	
			L1	L2
<b>Flomatic Valves, Primary Material: Acetal, Poppet Material: Nylon 11, Seal Material: Nitrile Rubber, Spring Material: Stainless Steel, Temperature Range: Up to 140°F (60°C), Maximum Working Pressure: 150 PSI @ 73°F</b> • Cracking Pressure: 1 PSI • NSF / ANSI 372 Certified				
175619	3/8"	FPT		10
175620	1/2"	FPT		10



<b>Boshart, Primary Material: PVC, Poppet Material: Acetal, Seal Material: Nitrile Rubber, Spring Material: Stainless Steel, Maximum Pressure: 150 PSI</b> • Cracking Pressure: 0.5 PSI • NSF / ANSI 372 Certified • Please note that 17PFV-250 & 17PFV-300 are not made Boshart and has a Cracking Pressure of 1 PSI				
17PFV075	3/4"	FPT	20	
17PFV100	1"	FPT	20	
17PFV125	1-1/4"	FPT	20	
17PFV150	1-1/2"	FPT	20	
17PFV200	2"	FPT	10	
17PFV-250	2-1/2"	FPT	12	
17PFV-300	3"	FPT	12	
17PFVB100125	1" or 1-1/4"	Insert	20	
17PFVM075150	3/4" - 1-1/2"	MPT	20	



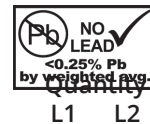
Contact your sales rep for any further information

Toll Free: 1-800-561-3164  
boshart.com

Rev. 5.4

### STAINLESS STEEL FOOT VALVES

Stainless steel foot valves prevent water from back flowing into the water source. They have a higher corrosion resistance.



Part No. Size Connection Type



**Boshart, Poppet Material: 304 Stainless Steel, Seal Material: Viton, Temperature Range: Up to 180°F (82°C), Maximum Pressure: 200 PSI**  
 • Cracking Pressure: 1 PSI  
 • NSF / ANSI 372 Certified

Part No.	Size	Connection Type	Quantity L1	Quantity L2
17FVSS-050	1/2"	FPT	10	100
17FVSS-075	3/4"	FPT	10	80
17FVSS-100	1"	FPT	10	60
17FVSS-125	1-1/4"	FPT	5	40
17FVSS-150	1-1/2"	FPT	5	30
17FVSS-200	2"	FPT	5	20
17FVSS-300	3"	FPT	8	
17FVSS-400	4"	FPT	4	

### FLAPPER FOOT VALVES

Flapper foot valves prevent water from back flowing into the water source. They use a flapper that closes when the pressure of the flow decreases ensuring there is no backflow.

• Cracking Pressure: 0.5 PSI



Part No. Size Connection Type Quantity L1 L2



**Boshart, PVC, Seal Material: Nitrile Rubber, 150 PSI @ 73°F**

Part No.	Size	Connection Type	Quantity L1
17PFVF-300	3"	FPT	6
17PFVF-400	4"	FPT	6
17PFVF-600	6"	FPT	2



**Boshart, Cast Iron, Temperature Range: Up to 80°F (27°C), Maximum Pressure: 20 PSI**

Part No.	Size	Connection Type
174964	2"	FPT
174966	3"	FPT
174967	4"	FPT
174969	6"	FPT



**Flomatic Valves, Cast Iron, Seal Material: EPDM, Temperature Range: Up to 180°F (82°C), Maximum Pressure: 200 PSI**

Part No.	Size	Connection Type
18FLFVCI-2	2"	Flange
18FLFVCI-2.5	2-1/2"	Flange
18FLFVCI-3	3"	Flange
18FLFVCI-4	4"	Flange
18FLFVCI-5	5"	Flange
18FLFVCI-6	6"	Flange
18FLFVCI-8	8"	Flange
18FLFVCI-10	10"	Flange
18FLFVCI-12	12"	Flange

Contact your sales rep for any further information

Toll Free: 1-800-561-3164

boshart.com

