

17(Q)SCBV-SU, 17(Q)SCBV-UC, 17(Q)SCBV-TU COMBINATION BALL/ SWING CHECK VALVE

Standard series PVC combination ball / swing check valves allow for wastewater pumping applications requiring both in-line shut off and back flow prevention. Combination valves result in a more compact installation than two separate valves, ideal for installations where space is limited. Quiet series combination valves are a great solution for sump, sewage, pool and spa applications, ideal solution when extremely quiet operation is desired.



IMPORTANT: When pumping SOLIDS/SEMI SOLIDS valve must be installed HORIZONTALLY (up to 45° angle acceptable). Extra care must be taken to ensure the flow arrow points away from the pump AND the check valve body is oriented as per the marking on the valve body "HORIZONTAL USE THIS SIDE UP". Failure to position the swing check valve with the hinge of the flapper in the top center position will result in the valve not functioning properly. ** Best practice is to install valves in the VERTICAL position when pumping SOLID FREE liquids.

FEATURES:

- Standard model has angled seat, which shortens the travel distance of the flapper minimizing flow reversal, noise and potential damage to hydraulic shock (water hammer)
- Quiet model offers spring loaded hinged flapper mechanism to eliminate noise caused by hydraulic shock (water hammer)
- Full Port design for less friction and easier pumping
- Double O-Ring valve seal on blow-out proof stem
- Durable ABS ball valve handle
- Designed for horizontal or vertical installation
- No metallic parts on standard models, corrosion resistant

SPECIFICATIONS:

- Material: Type 1 Rigid Polyvinyl Chloride as per ASTM-D1784
- Static Head: Minimum 2 feet
- Body: White
- Neoprene seal
- Valve body designed for interchangeability between compression or ASTM-D2466 slip connections
- Weighted flapper assembly on standard models
- Spring loaded flapper assembly on quiet models
- SS Hinge pin and torsion spring for corrosion resistance on quiet models

RATINGS:

- Max Pressure: Valve bodies are rated at 150 PSI (1034.21 kPa) Static Pressure at 72°F (22°C) Non Shock
- Not recommended for use on systems exceeding 100 PSI (689.48 kPa) at 120°F (48.8°C)

Temperature Correction Factor to PVC Swing Check Valves
As temperature increases, working pressure decreases. The optimal working pressure for PVC valves is 150 PSI @ 73°F (22°C). If the temperature increases above 73°F (22°C), use the PVC correction factor to determine working pressure. Multiply the maximum working pressure by the correction factor.

| Temperature | 73°F (22°C) | 90°F (32°C) | 100°F (38°C) | 110°F (44°C) | 120°F (49°C) | 130°F (54°C) | 140°F (60°C) |
|-----------------------|-------------|-------------|--------------|--------------|--------------|--------------|--------------|
| PVC Correction Factor | 1.00 | 0.75 | 0.62 | 0.51 | 0.40 | 0.31 | 0.22 |

BOSHART

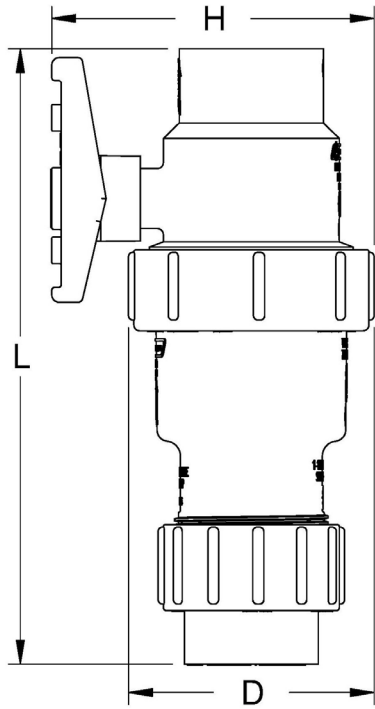
INDUSTRIES

25 Whaley Avenue, PO Box 310
Milverton, ON CANADA N0K 1M0
Tel: 800-561-3164

VISIT US ONLINE AT BOSHART.COM

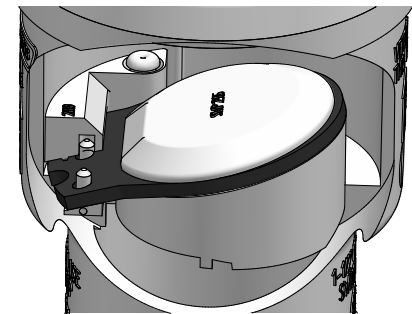
For more information on installation, adjustment, repair & operation, visit Boshart Knowledge Base at
SUPPORT.BOSHART.COM

Slip Union:

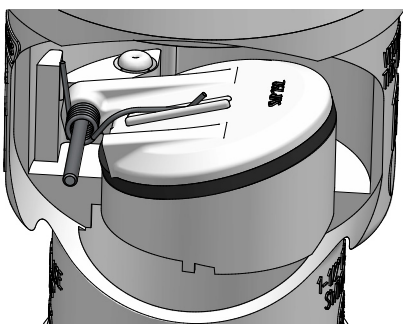


| Component | Name |
|--------------------------------|----------------------|
| 1 | Slip connector |
| 2 | Slip Nut |
| 3 | Ball Valve Union Nut |
| 4 | O-Ring (AS568A-329) |
| Boshart part numbers on Page 5 | |

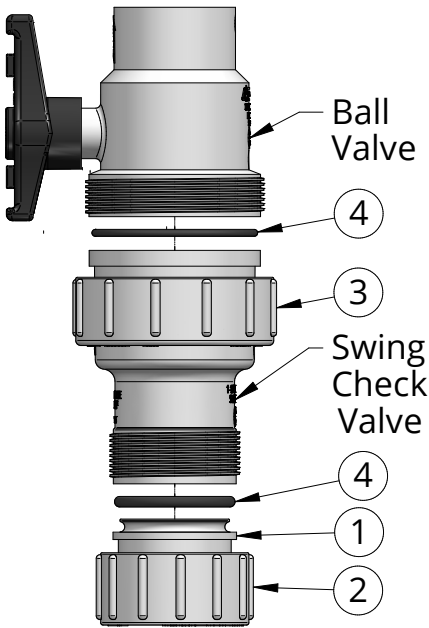
Valve Body Internal View:



17SCBV Series - Gravity Closing
(Rubber Flapper & Angled Seat)



17QSCBV Series - Quiet Spring Assist
Closing (SS Mechanical Hinge Pin)



| DIMENSIONS | | | | | | | | | | | |
|--------------|----------|-------------------|-------------------|-------|--------|------|--------|------|--------|--------|--------|
| Part No. | Type | Inlet Connection | Outlet Connection | L | | H | | D | | Weight | |
| | | | | in | mm | in | mm | in | mm | lb | grams |
| 17SCBV-15SU | Standard | 1-1/2" Slip Union | 1-1/2" Slip | 10.30 | 261.62 | 5.39 | 136.91 | 4.11 | 104.39 | 1.75 | 793.79 |
| 17QSCBV-15SU | Quiet | | | | | | | | | | |
| 17SCBV-20SU | Standard | 2" Slip Union | 2" Slip | 11.65 | 295.91 | 6.17 | 137.06 | 4.56 | 115.82 | 2.53 | 1147.6 |
| 17QSCBV-20SU | Quiet | | | | | | | | | | |

BOSHART

INDUSTRIES

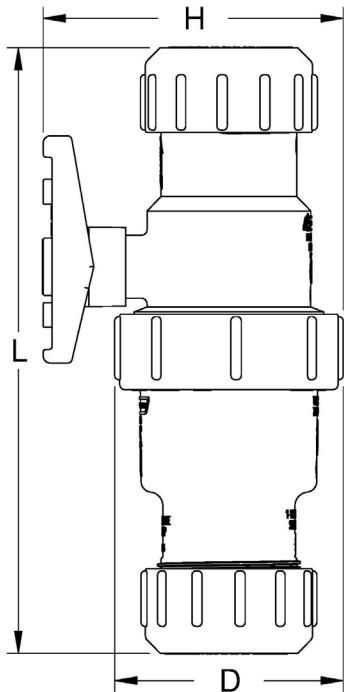
25 Whaley Avenue, PO Box 310
Milverton, ON CANADA N0K 1M0
Tel: 800-561-3164
VISIT US ONLINE AT BOSHART.COM

For more information on installation,
adjustment, repair & operation, visit
Boshart Knowledge Base at
SUPPORT.BOSHART.COM

Compression Union:

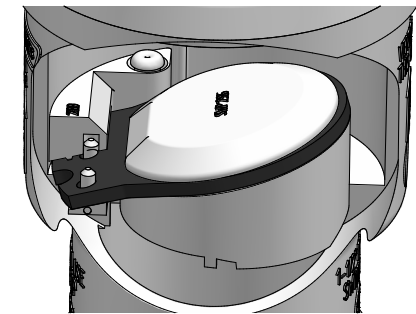


17SCBV-15UC

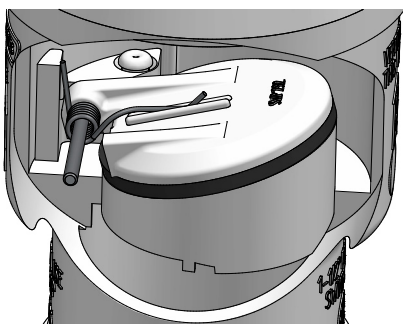


| Component | Name |
|--------------------------------|----------------------|
| 1 | Compression Gasket |
| 2 | Compression Nut |
| 3 | Ball Valve Union Nut |
| 4 | O-Ring (AS568A-234) |
| Boshart part numbers on Page 5 | |

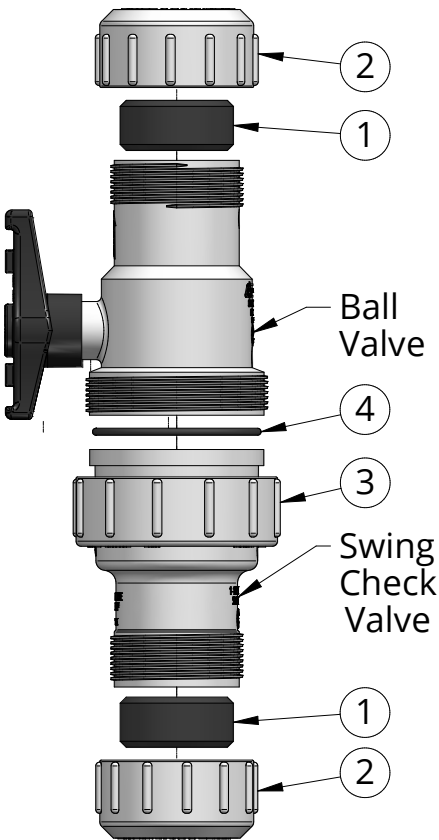
Valve Body Internal View:



17SCBV Series - Gravity Closing
(Rubber Flapper & Angled Seat)



17QSCBV Series - Quiet Spring Assist
Closing (SS Mechanical Hinge Pin)



| DIMENSIONS | | | | | | | | | | | |
|--------------|----------|--------------------|--------------------|-------|--------|------|--------|------|--------|--------|--------|
| Part No. | Type | Inlet Connection | Outlet Connection | L | | H | | D | | Weight | |
| | | | | in | mm | in | mm | in | mm | lb | grams |
| 17SCBV-15UC | Standard | 1-1/2" Compression | 1-1/2" Compression | 10.93 | 277.62 | 5.39 | 136.91 | 4.11 | 104.39 | 1.98 | 898.11 |
| 17QSCBV-15UC | Quiet | | | | | | | | | | |
| 17SCBV-20SU | Standard | 2" Compression | 2" Compression | 11.90 | 302.26 | 6.17 | 156.72 | 4.56 | 115.82 | 2.78 | 1261.0 |
| 17QSCBV-20UC | Quiet | | | | | | | | | | |

BOSHART

INDUSTRIES

25 Whaley Avenue, PO Box 310
Milverton, ON CANADA N0K 1M0
Tel: 800-561-3164

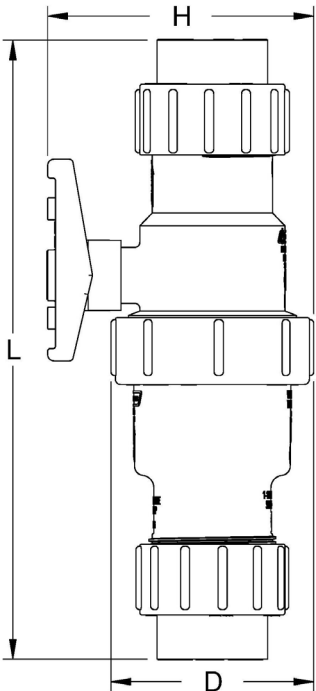
VISIT US ONLINE AT BOSHART.COM

For more information on installation, adjustment, repair & operation, visit Boshart Knowledge Base at [SUPPORT.BOSHART.COM](https://support.boshart.com)

Slip True Union:

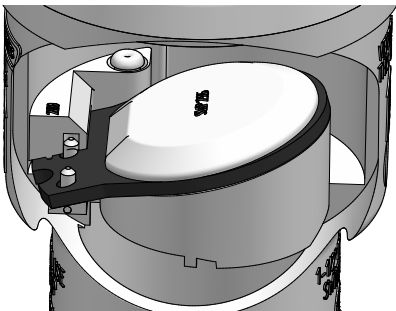


17SCBV-20TU

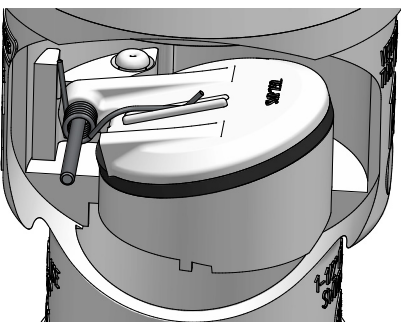


| Component | Name |
|--------------------------------|----------------------|
| 1 | Slip Connector |
| 2 | O-Ring (AS568A-329) |
| 3 | Slip Nut |
| 4 | Ball Valve Union Nut |
| 5 | O-Ring (AS568A-234) |
| Boshart part numbers on Page 5 | |

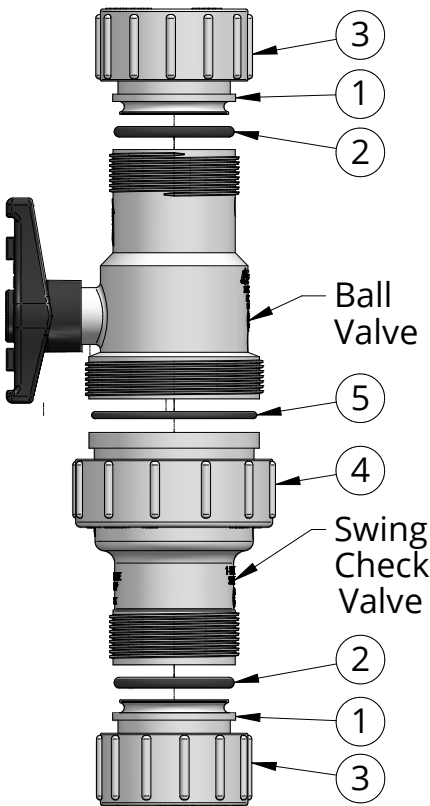
Valve Body Internal View:



17SCBV Series - Gravity Closing
(Rubber Flapper & Angled Seat)



17QSCBV Series - Quiet Spring Assist
Closing (SS Mechanical Hinge Pin)



| DIMENSIONS | | | | | | | | | | | |
|--------------|----------|------------------------|------------------------|-------|--------|------|--------|------|--------|--------|--------|
| Part No. | Type | Inlet Connection | Outlet Connection | L | | H | | D | | Weight | |
| | | | | in | mm | in | mm | in | mm | lb | grams |
| 17SCBV-15TU | Standard | 1-1/2" True Union Slip | 1-1/2" True Union Slip | 12.59 | 319.79 | 5.39 | 136.91 | 4.11 | 104.39 | 2.03 | 920.79 |
| 17QSCBV-15TU | Quiet | | | | | | | | | | |
| 17SCBV-20TU | Standard | 2" True Union Slip | 2" True Union Slip | 13.90 | 353.06 | 6.17 | 156.72 | 4.56 | 115.82 | 2.91 | 1319.9 |
| 17QSCBV-20TU | Quiet | | | | | | | | | | |

BOSHART

INDUSTRIES

25 Whaley Avenue, PO Box 310
Milverton, ON CANADA N0K 1M0
Tel: 800-561-3164

VISIT US ONLINE AT BOSHART.COM

For more information on installation, adjustment, repair & operation, visit Boshart Knowledge Base at SUPPORT.BOSHART.COM

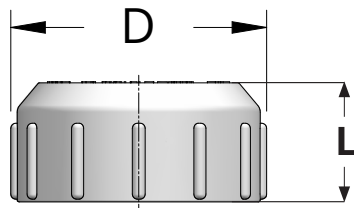
REPLACEMENT PARTS:

| REPLACEMENT PARTS - SLIP | | | | | | |
|--------------------------|----------|----------------|----------|----------------------|--------------------------------|-------------------------------|
| Part No. | Type | Slip Connector | Slip Nut | Ball Valve Union Nut | Slip Connector O-Ring | Ball Valve O-Ring |
| 17SCBV-15SU | Standard | 35-CONN15SL | 35-N15SL | 35-BV15-UN* | 35-CONN15SL-OR (AS568A-329) | 35-SC15-VBOR* (AS568A-234) |
| 17QSCBV-15SU | Quiet | | | | | |
| 17SCBV-20SU | Standard | 35-CONN20SL | 35-N20SL | 35-BV20-UN* | 35-CONN20SL-OR (AS568A-332) | 35-SC20-VBOR* (AS568A-238) |
| 17QSCBV-20SU | Quiet | | | | | |

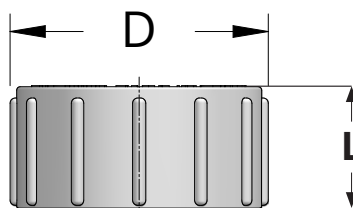
| REPLACEMENT PARTS - COMPRESSION | | | | | |
|---------------------------------|----------|--------------------|-----------------|----------------------|-------------------------------|
| Part No. | Type | Compression Gasket | Compression Nut | Ball Valve Union Nut | O-Ring |
| 17SCBV-15UC | Standard | (2) 35-CONN15CPG | (2) 35-N15CP | 35-BV15-UN* | 35-SC15-VBOR* (AS568A-234) |
| 17QSCBV-15UC | Quiet | | | | |
| 17SCBV-20UC | Standard | (2) 35-CONN20CPG | (2) 35-N20CP | 35-BV20-UN* | 35-SC20-VBOR* (AS568A-238) |
| 17QSCBV-20UC | Quiet | | | | |

*both slip and compression parts use common ball valve union nut & O-rings

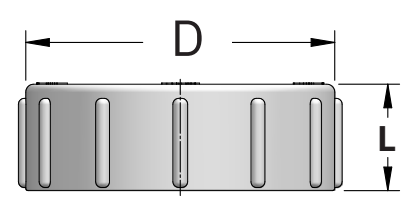
| REPLACEMENT PARTS - TRUE UNION SLIP | | | | |
|-------------------------------------|----------|-----------------|----------------------------------|----------------|
| Part No. | Type | Slip Connector | O-Ring | Slip Union Nut |
| 17SCBV-15TU | Standard | (2) 35-CONN15SL | (2) 35-CONN15SL-OR AS568A-329 | (2) 35-N15SL |
| 17QSCBV-15TU | Quiet | | | |
| 17SCBV-20TU | Standard | (2) 35-CONN20SL | (2) 35-CONN20SL-OR AS568A-332 | (2) 35-N20SL |
| 17QSCBV-20TU | Quiet | | | |



Compression Nut

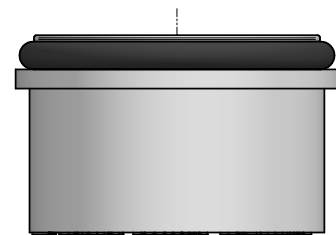


Slip Union Nut



Ball Valve Union Nut

| Replacement Nuts | Diameter | | Length | |
|-----------------------------|----------|--------|--------|-------|
| | in | mm | in | mm |
| Compression Nut | | | | |
| 35-N15CP | 3.192 | 81.08 | 1.525 | 38.74 |
| 35-N20CP | 3.706 | 94.13 | 1.725 | 43.82 |
| Slip Union Nut | | | | |
| 35-N15SL | 3.131 | 79.53 | 1.438 | 36.53 |
| 35-N20SL | 3.668 | 93.17 | 1.725 | 43.82 |
| Ball Valve Union Nut | | | | |
| 35-BV15-UN | 4.121 | 104.67 | 1.355 | 34.42 |
| 35-BV20-UN | 4.678 | 118.82 | 1.355 | 34.42 |



Slip Connector with O-ring

BOSHART
INDUSTRIES

25 Whaley Avenue, PO Box 310
Milverton, ON CANADA N0K 1M0
Tel: 800-561-3164

VISIT US ONLINE AT BOSHART.COM

For more information on installation,
adjustment, repair & operation, visit
Boshart Knowledge Base at
SUPPORT.BOSHART.COM

