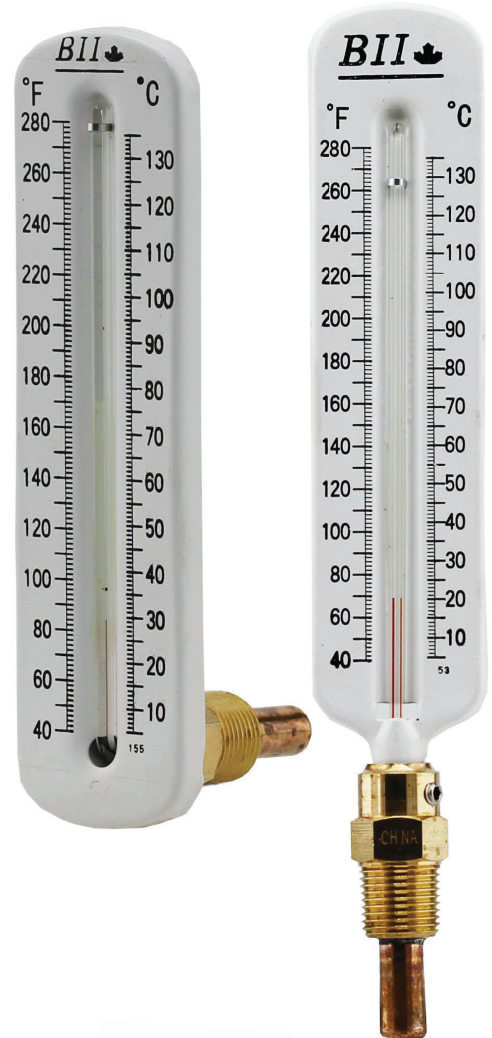


# INTRODUCTION TO TRIDICATORS, THERMOWELLS & THERMOMETERS

Tridicators, bi-metal thermometers, thermowells and hot water thermometers are commonly used in hydronic heating, plumbing and industrial systems. Tridicators monitor pressure, temperature and system altitude in boilers and pressurized hot water applications. Bi-metal thermometers provide reliable, direct temperature readings in pipes, tanks and equipment. Thermowells protect temperature instruments from pressure, flow and corrosive media while allowing for easy maintenance. Hot water thermometers are used to measure water temperature in heating and plumbing systems, ensuring safe and efficient operation.



**User Responsibility Statement:** It is the user's sole responsibility to determine the product's suitability for its intended use. For full details, visit Boshart Industries [Reference Documents](#) for our User Safety Responsibility Statement and other important documents.



25 Whaley Avenue, PO Box 310, Milverton, ON CANADA N0K 1M0  
Tel: 800-561-3164

VISIT US ONLINE AT [BOSHART.COM](http://BOSHART.COM)



# BI-METAL THERMOMETERS

## APPLICATIONS:

A bi-metal thermometer is a temperature measuring device that uses a coiled bi-metal element. As the temperature changes, the metals expand at different rates, causing the strip to bend and move the pointer on the dial. This provides a simple and reliable way to read temperature without the need for electricity.

## FEATURES:

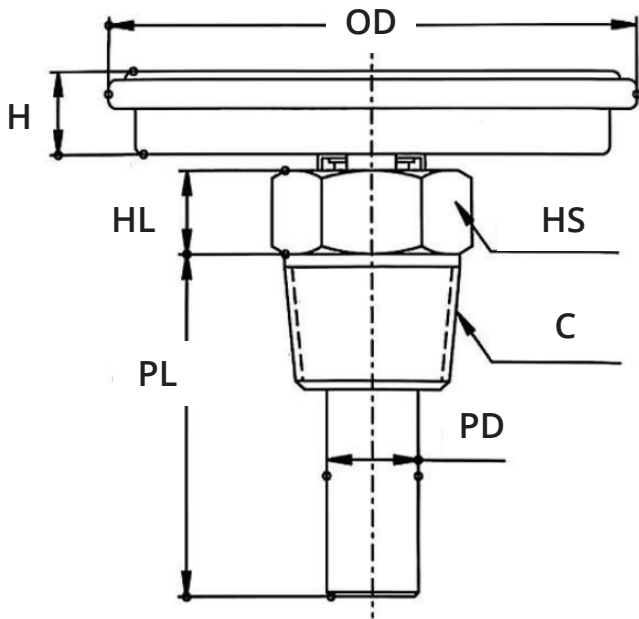
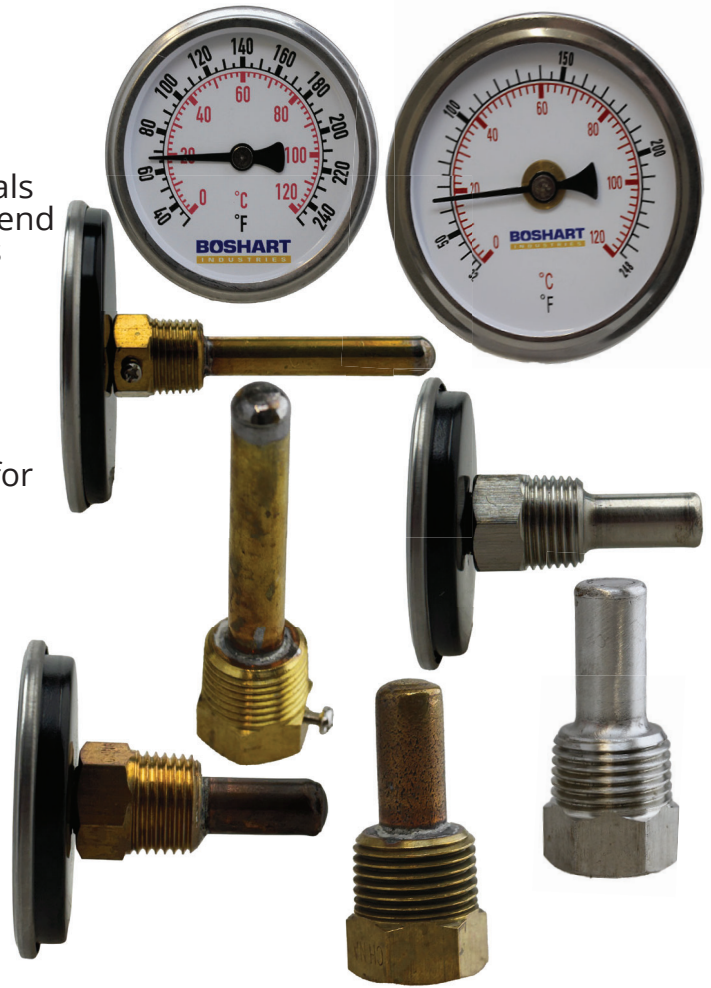
- ±2% Working Range
- Removeable thermowell - does not require any tool for 2-1/2", #2 Philips Screwdriver required for 3"

## SPECIFICATIONS:

- ANSI/ASME B40.1 Pressure Gauges and Gauge Attachments

## RATINGS:

- Maximum Pressure Rating: 87 PSI (600 kPa)
- Maximum Temperature Rating: -40°F to 140°F (-40°C to 60°C)



SPECIFICATIONS	
Part Name	Material
Dial	2" White Aluminum
Case	Aluminum
Lens	Acrylic
Connection	Brass/Stainless Steel
Element	Coiled Bi-Metal/ Brass
Pointer	Aluminum (Anodized Black)
Welding	Tin Solder

DIMENSIONS																
Part No.	C (Connection)	Dial Size	Material	HS (Hex Size)	OD (Outside Diameter)		H (Height)		PD (Probe Diameter)		PL (Probe Length)		HL (Hex Length)		Weight	
					mm	in	mm	in	mm	in	mm	in	mm	in	lbs	grams
TW25-CB2-250-25	1/2"	2-1/2"	Brass	21	2.52	64.00	0.39	10.00	0.43	11.00	1.57	40.00	0.39	10.00	0.22	100
TW30-CB2-250-25	1/2"	3"	Brass		3.31	84.00	0.45	11.50	0.41	10.50	2.95	75.00	0.24	6.00	0.66	300
TW25-CB2-250-SS25	1/2"	2-1/2"	Stainless		2.52	64.00	0.39	10.00	0.43	11.00	1.57	40.00	0.39	10.00	0.22	100

± 1.5% Accuracy



25 Whaley Avenue, PO Box 310, Milverton, ON CANADA N0K 1M0

Tel: 800-561-3164

VISIT US ONLINE AT BOSHART.COM

For more information on installation, adjustment, repair & operation, visit Boshart Knowledge Base at SUPPORT.BOSHART.COM

