

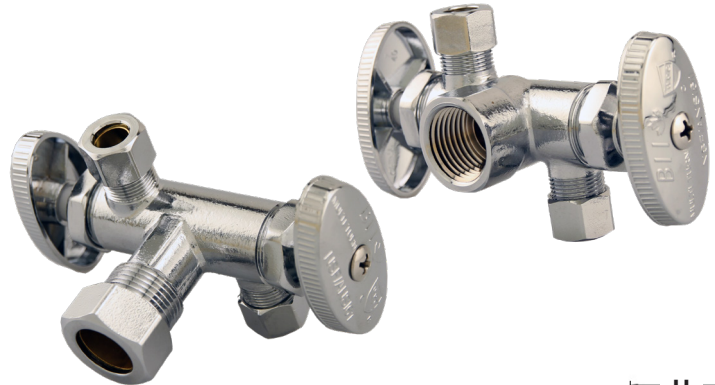
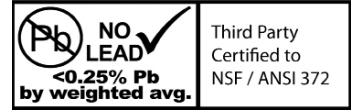
08SVDD-NL SERIES BRASS CHROME PLATED DUAL OUTLET DUAL SHUTOFF SUPPLY (STOP) VALVE - MULTI-TURN

SPECIFICATION:

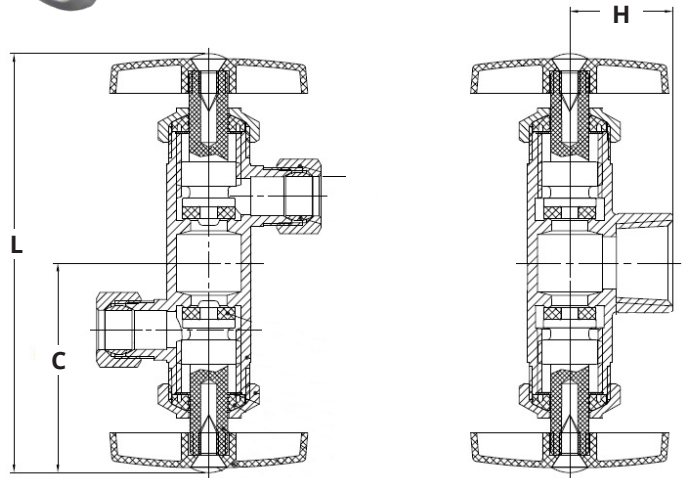
- Threads conform to ANSI/ASME B1.20.1
- Compression connections conform to SAE J512
- Max Pressure Rating: 125 PSI
- Max Temperature Rating: 180°F (82°C)
- Chrome plated no lead brass body

CERTIFICATION:

- NSF/ANSI Standard 61 & 372 Certified
- CSA Standard B125.1 Certified



MATERIAL LIST	
Name	Material
Compression Nut	Brass
Compression Sleeve	Brass
Seat	EPDM
Body	No Lead Brass
Packing Nut	Brass
Washer	304 Stainless Steel
Stem Packing	EPDM
Stem	POM
Handle	Chrome Plated ABS
Handle Screw	304 Stainless Steel



DIMENSIONS									
Part No.	Inlet Connection	Outlet Connection	C		H		L		Weight grams
			inches	mm	inches	mm	inches	mm	
08SVDD-05F03CPNL	1/2" FPT	3/8" Comp x 3/8" Comp	2.04	51.80	1.00	25.50	4.08	103.60	190
08SVDD-58CP03CPNL	5/8" Comp	3/8" Comp x 3/8" Comp	2.04	51.80	1.82	46.20	4.08	103.60	210



25 Whaley Avenue, PO Box 310, Milverton, ON CANADA N0K 1M0
Tel: 800-561-3164

boshart.com ♦ blog.boshart.com